



## Product Catalogue

Version 1.1 | [armorgard.com.au](http://armorgard.com.au)  
[armorgard.co.nz](http://armorgard.co.nz)





# Welcome

**To the latest edition of the Armorgard product catalogue.** This catalogue includes our extensive range of market-leading solutions for on-site security, safety and productivity. All of our products are exclusive to Armorgard and come from the work of our talented in-house R&D team. Our latest innovations are used as essential solutions for H&S best practice. You won't find the same products anywhere else and you certainly won't find better.

For help, advice and to place orders, contact our team:



Call us on **1300 131 751**  
or email **[sales@armorgard.com.au](mailto:sales@armorgard.com.au)**  
**[armorgard.com.au](http://armorgard.com.au)**



Call us on **04 280 6440**  
or email **[sales@armorgard.co.nz](mailto:sales@armorgard.co.nz)**  
**[armorgard.co.nz](http://armorgard.co.nz)**



The images used throughout are for the purpose of illustration and reference only. Content may not be included as standard. Please note that dimensions are approximate.





# What we stand for...

## Our vision



To supply and produce innovative solutions to increase safety and productivity in workplaces all over the world.

## Our mission



Design and manufacture market-leading products for secure tool storage, efficient manual handling and improved site safety.

## Our values (SHAPE)

### Supportive



- We treat our colleagues and our customers with respect
- We work as a team to ensure success

### Honest



- We are clear in all communication, providing assurance to our customers and colleagues
- We build trust with all of our customers and colleagues through managing expectations

### Accountable



- We do what we say we will do
- We are accountable as a team and as individuals

### Passionate



- We strive to be positive role models, demonstrating passion for our business
- We are inquisitive and open to new ideas

### Excellence



- We aim to exceed expectations through our performance
- We always aim higher for our customers

» robust » secure » trusted





# We look at things from a different angle

Every product is developed in response to a need. We listen to all customers and create the perfect solutions to their problems.

Our team continue to develop excellent new products that are tough, dependable and purpose-built for your needs. Plus, we won't keep you waiting. We pride ourselves on our high stock levels and next day delivery on all stock items.

If you have an idea for a new product or feedback on an existing one, we'd love to hear from you. Please send us an email to discuss your ideas.



Replacement keys & parts available. See page 80

“Our product team is continually developing new ideas – tough, dependable products.”

## Contents

<b>SECTION 01</b> Tool and equipment storage	tuffbank™ .....10	fittingstor™ .....24
	oxbox™ .....14	pipestor™ .....28
	trekdror™ .....16	forma-stor™ .....30
	barrobox™ .....20	strimmersafe vault™ .....34
	tuffstor cabinet™ .....22	strimmersafe rack™ .....35
<b>SECTION 02</b> Work platforms and units	instagate™ .....38	cuttingstation™ .....44
	tuffbench™ .....41	datastation™ .....50
	mobile tuffbench™ .....42	
<b>SECTION 03</b> Manual handling products	piperack™ .....55	spoolkart™ .....67
	bundlerack™ .....58	v-kart™ .....68
	loadall™ .....59	beamkart™ .....68
	rubble truck™ .....64	turntable truck™ .....69
	flexikart™ .....66	
<b>SECTION 04</b> Hazardous goods storage	tuffcage™ .....72	
	gorilla gas cage™ .....73	
<b>SECTION 05</b>	Replacement keys and parts.....74	





## SECTION 01 TOOL AND EQUIPMENT STORAGE



## SECTION 01 Tool and equipment storage

tuffbank™	12
oxbox™	16
trekdror™	18
barrobox™	22
tuffstor cabinet™	24
fittingstor™	26
pipestor™	30
forma-stor™	33
strimmersafe vault™	36
strimmersafe rack™	37

# armorgard tuffbank™

Our best-selling secure site storage solution

Built to a rigorous specification with a host of innovative features, TuffBank™ sets the industry benchmark for quality and functionality. A Sold Secure and Secured by Design accredited product, its heavy-duty steel plate construction and unique anti-jemmy technology means that it is virtually impregnable.

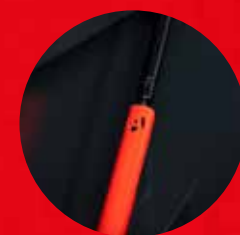
TURN OVER FOR MORE INFORMATION ABOUT THE TUFFBANK™



KEYED ALIKE 5-LEVER DEADLOCKS BOTH SIDES WITH HEAVY-DUTY CHUBB-STYLE KEYS



CABLE PASSING POINT TO ALLOW CHARGING WITHOUT COMPROMISING SECURITY



STRONG GAS STRUTS AND SLAMSTOP LID STAY FITTED AS STANDARD - CONFORMS TO INDUSTRY STANDARDS



UNIQUE EXTERNAL AND INTERNAL ANTI-JEMMY SYSTEMS AND FULLY-WELDED CONTINUOUS PIANO HINGE

TB2

TBC4

OPTIONAL EXTRAS



UNIQUE POWERSHELF SECURELY CHARGES TOOLS AND MOBILE DEVICES



LIFTING EYES TO ALLOW FOR TRANSIT BY CRANE



HEAVY-DUTY CASTORS INCREASE MOVABILITY ON-SITE



FORKSKIDS WITH FIXING SLOTS FOR EASILY ADDING CASTORS (EXCEPT TB1 AND TB12)

FULL RANGE IS SUITABLE FOR VANS, TRUCKS, WORKSHOPS AND SITES

POWDER COATED FOR MAXIMUM DURABILITY



WATCH THE TUFFBANK™ IN ACTION

TOOL AND EQUIPMENT STORAGE



» MARKET-LEADING TOOL VAULT  
OFFERING BEST-IN-CLASS  
PERFORMANCE

**armorgard**  
**tuffbank™**



Product Code	Description	Weight (kg)	External Dimensions W x D x H (mm)	Internal Dimensions W x D x H (mm)
TB1	Van Box	50	950 x 510 x 460	860 x 395 x 450
TB12	Truck Box	58	1150 x 495 x 460	1060 x 420 x 450
TB21	Site Box	60	760 x 615 x 640	670 x 540 x 545
TB2	Site Box 4x2x2	80	1150 x 615 x 640	1060 x 540 x 540
TB3	Site Box 4x3x2	97	1150 x 615 x 930	1060 x 540 x 835
TBC4	Site Chest 4x4x2	127	1150 x 615 x 1265	1160 x 540 x 1170
TBC5	Site Chest 5x4x2	153	1525 x 615 x 1265	1435 x 540 x 1170
TB6	Truck Box 6x2x2	119	1925 x 615 x 640	1835 x 540 x 545
CLEK	Lifting Eye Kit	2	N/A	N/A
SHE-4	TuffBank™ Shelf	3	1100 x 150 x 95	1095 x 145 x 25
SHE-D4	TuffBank™ Deep Shelf	4	1100 x 250 x 95	1095 x 245 x 25
SHE-D5	TuffBank™ Deep Shelf	6	1460 x 250 x 95	1455 x 245 x 25
SHE-P4-110	TuffBank™ PowerShelf	6	1100 x 150 x 95	1095 x 145 x 25
SHE-DP4-110	TuffBank™ Deep PowerShelf	6	1100 x 250 x 95	1095 x 245 x 25
SHE-DP5-110	TuffBank™ Deep PowerShelf	8	1460 x 250 x 95	1455 x 245 x 25

\*Optional shelves available for on-site chests, see page 81. Note: Weights and dimensions are approximate. External dimensions include handles.

armorgard  
oxbox™

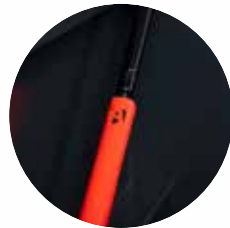
The robust, good value solution for securing tools and equipment

OxBox™ tool vaults provide a fantastic combination of security and affordability. OxBox™ shares many of the premium features of our higher priced storage box ranges, including locks, hinges, gas struts and paint finish. Its unique "folded" construction delivers outstanding strength. Made from 1.5mm and 2.0mm steel, the OxBox™ is available in 6 sizes.

STEEL PLATE CONSTRUCTION WITH DURABLE POWDER COATED FINISH



KEYED ALIKE 5-LEVER DEADLOCKS BOTH SIDES WITH HEAVY-DUTY CHUBB-STYLE KEYS



STRONG GAS STRUTS FITTED AS STANDARD - CONFORMS TO INDUSTRY STANDARDS

SUITABLE FOR VANS, TRUCKS, WORKSHOPS AND SITES

» OPTIONAL EXTRAS



HEAVY-DUTY CASTORS USING THE PRE-DRILLED HOLES (EXCEPT OX05, OX1, OX2 AND OX6)

FORK SKIDS WITH FIXING SLOTS FOR EASILY ADDING CASTORS (EXCEPT OX1, OX2 AND OX6)

» For on-site solutions, call our customer experience team.

» "EFFECTIVE SECURITY - GREAT VALUE"



Product Code	Description	Weight (kg)	External Dimensions W x D x H (mm)	Internal Dimensions W x D x H (mm)
OX05	Van Box	27	810 x 470 x 380	700 x 355 x 370
OX1	Van Box	32	885 x 470 x 450	775 x 355 x 440
OX2	Truck Box	41	1155 x 450 x 455	1075 x 365 x 445
OX3	Site Box 4x2x2	60	1210 x 625 x 645	1060 x 540 x 550
OX4	Site Chest 4x4x2	89	1220 x 600 x 1185	1065 x 515 x 1090
OX6	Truck Box	60	1740 x 515 x 445	1660 x 430 x 430

\*Optional shelves available for on-site chests, see page 81. Note: Weights and dimensions are approximate. External dimensions include handles.





**Our range of robust steel tool drawers for vehicles and small spaces**

TrekDror™ offers ultimate versatility to keep everything tidy and organised in your vehicle; from your power tools right down to that 5mm screwdriver. TrekDror™ units are designed to fit neatly into smaller spaces and can be fixed down. Each TrekDror™ is cased in corrugated steel with reinforced ribs and 5-lever deadlocks to give you that extra layer of security.

## armorgard trekdror™



» WATCH THE TREKDROR™ IN ACTION

ROBUST CORRUGATED 1.5MM STEEL CASING PROVIDES DURABILITY AND STRENGTH

TKD1 AND TKD3 CAN BE STACKED

ACCESS CONTENT EASILY AND SAFELY

AVAILABLE IN 3 DIFFERENT SIZES

DRAWER EXTENDS OUT OVER 80% FOR SPACE EFFICIENCY

RECESSED HANDLES

KEYED ALIKE 5-LEVER DEADLOCKS FOR MAXIMUM SECURITY

UNIQUE ROLLER SYSTEM ENSURES A SMOOTH OPERATION

TKD1

TKD3



For on-site solutions, call our customer experience team.



» "BRILLIANT! AMAZING TO SEE HOW MUCH KIT YOU CAN FIT IN THEM"

**armorgard**  
**trekdror™**

TKD1



TKD2



TKD3



»  
OPTIONAL EXTRAS



MOUNTING KIT ALLOWS  
THE TREKDROR™ TO BE  
MOUNTED



DIVIDER KIT ALLOWS  
YOU TO EASILY  
ORGANISE YOUR TOOLS



OPTIONAL ANTI-SLIP  
RUBBER MAT TO PREVENT  
TOOLS FROM MOVING



STACKING KIT ALLOWS  
THE TREKDROR™ TO BE  
STACKED

Product Code	Description	Weight (kg)	External Dimensions W x D x H (mm)	External Dimensions 2 (including drawer open) W x D x H (mm)	Internal Dimensions W x D x H (mm)
TKD1	TrekDror™	44	490 x 1105 x 300	490 x 1900 x 300	410 x 1040 x 210
TKD2	TrekDror™	63	980 x 1105 x 200	980 x 1905 x 200	900 x 1040 x 140
TKD3	TrekDror™	58	490 x 1105 x 490	490 x 1905 x 490	410 x 1040 x 430
TKD1D	TrekDror™ Divider Kit	3	435 x 3 x 240	N/A	N/A
TKD2D	TrekDror™ Divider Kit	3	925 x 3 x 140	N/A	N/A
TKD3D	TrekDror™ Divider Kit	3	435 x 3 x 400	N/A	N/A
TKDMPK	TrekDror™ Mounting Kit	1	N/A	N/A	N/A
TKDSPK	TrekDror™ Stacking kit	1	N/A	N/A	N/A
TKD13-RM	TrekDror™ Mat for TKD1 and TKD3	1.5	437 x 1040 x 3	N/A	N/A
TKD2-RM	TrekDror™ Mat for TKD2	3	927 x 1040 x 3	N/A	N/A

Note: Weights and dimensions are approximate. External dimensions include handles.



**armorgard**

# barrobox™

The ultimate portable tool protection for tradesmen on the move

BarroBox™ is secure, robust, and extremely versatile. This one-of-a-kind, mobile site box protects your tools wherever you need to work.

Easily wheel tools and equipment around on-site, then use a lever from inside the box to raise the wheels and lock to create a static, secure tool vault.



» WATCH THE BARROBOX™ IN ACTION



KEYED ALIKE 5-LEVER DEADLOCKS BOTH SIDES WITH HEAVY-DUTY CHUBB-STYLE KEYS



SLAMSTOP LID STAY FOR ADDITIONAL USER SAFETY



BB2



STRONG GAS STRUTS FITTED AS STANDARD - CONFORMS TO INDUSTRY STANDARDS

ANTI-JEMMY FEATURES FOR INCREASED SECURITY

ROBUST FOLDING HANDLES ENSURE THE BARROBOX™ IS EASY TO MANOEUVRE

HEAVY-DUTY WHEELS TO TAKE IMPACT

ROBUST CONSTRUCTION FROM HEAVY-DUTY STEEL PLATE THROUGHOUT

POWDER COATED FOR MAXIMUM DURABILITY



TOOL AND EQUIPMENT STORAGE



For on-site solutions, call our customer experience team.

Product Code	Description	Weight (kg)	External Dimensions W x D x H (mm)	Internal Dimensions W x D x H (mm)
BB2	BarroBox™	82	770 x 1045 x 716	600 x 797 x 608

Note: Weights and dimensions are approximate. External dimensions include handles.



# tuffstor cabinet™

The ultra-tough cabinet that keeps your equipment organised and accessible

TuffStor Cabinet™ offers the same level of security as a conventional site safe but uses less floor space. This versatile, secure cabinet keeps tools safe and easily accessible. Ideal for use in workshops and vehicles. Want it mobile? It's easy to add castors using the pre-drilled holes.



KEYED ALIKE 5-LEVER DEADLOCKS BOTH SIDES WITH HEAVY-DUTY CHUBB-STYLE KEYS

FULLY ADJUSTABLE SHELVES FITTED ON ALL SIZES

POWDER COATED FOR MAXIMUM DURABILITY

HEAVY-DUTY DOORS WITH FIXED HINGES AND CONCEALED ANTI-JEMMY SYSTEM

ROBUST CONSTRUCTION FOR MAXIMUM PROTECTION

FORK SKIDS WITH FIXING SLOTS FOR EASILY ADDING CASTORS



For on-site solutions, call our customer experience team.



OPTIONAL EXTRAS



HEAVY-DUTY CASTORS USING THE PRE-DRILLED HOLES



TSC3



980mm



TSC1

1250mm



TSC2

1555mm



TSC3

Product Code	Description	Weight (kg)	External Dimensions W x D x H (mm)	Internal Dimensions W x D x H (mm)
TSC1	TuffStor Cabinet™	44	500 x 590 x 985	390 x 455 x 715
TSC2	TuffStor Cabinet™	74	800 x 590 x 1255	690 x 505 x 885
TSC3	TuffStor Cabinet™	113	1205 x 585 x 1570	535 x 510 x 1185 (per section)

Note: Weights and dimensions are approximate. External dimensions include handles.



**armorgard**

# fittingstor™

**The secure storage cabinet designed to keep thieves at bay!**

The high value of copper fittings and cabling means that theft is on the rise, with criminals targeting construction sites on a daily basis. Don't make it easy for them! **FittingStor™** is designed to secure all your costly M&E components and tools in one safe, easily portable location.



» WATCH THE FITTINGSTOR™ IN ACTION



» For on-site solutions, call our customer experience team.



TOOL AND EQUIPMENT STORAGE



» "THE MOST APPROPRIATE FITTING STORE ON THE MARKET."

**armorgard**  
**fittingstor™**



FC5

HASP AND STAPLE PADLOCK FACILITY (FC5)

FC5 & FC6 - FIXED REINFORCED CERTIFIED SHELVES

FC6

»  
OPTIONAL EXTRAS



Product Code	Description	Weight (kg)	External Dimensions W x D x H (mm)	Internal Dimensions W x D x H (mm)
FC2	FittingStor™	89	800 x 570 x 1480	710 x 510 x 915
FC3	FittingStor™	139	1205 x 580 x 1780	1130 x 510 x 1215
FC4	FittingStor™	133	1120 x 575 x 1575	930 x 515 x 1180
FC5	FittingStor™	160	915 x 990 x 1570	Individual shelf: 790 x 450 x 295
FC6	FittingStor™	123	1080 x 765 x 1880	880 x 715 x 1540

Note: Weights and dimensions are approximate. External dimensions include handles.



The mobile secure storage trunk that keeps your piping safe and organised

This innovatively designed portable 'copper coffin' gives you peace of mind that your piping is safe from theft. The PipeStor™ accommodates different sizes and styles of pipes, including plastic and metal conduit, trunking and cable tray.

Extremely versatile - it can be extended to accommodate longer lengths by adding sections as required.

armorgard  
pipestor™



FACILITY FOR PADLOCK

INTERNALLY DIVIDED INTO 4 SEPARATE COMPARTMENTS

ROBUST STEEL PLATE CONSTRUCTION FOR MAXIMUM PROTECTION



SECURED WITH A 5-LEVER DEADLOCK AND HEAVY-DUTY CHUBB STYLE KEYS

AVAILABLE FOR EITHER 3M OR 6M LENGTHS



PS3

PS6

FULLY MOBILE WITH HEAVY-DUTY SWIVEL CASTORS

FORK SKIDS FOR EASY TRANSPORTATION

POWDER COATED FOR MAXIMUM DURABILITY



For on-site solutions, call our customer experience team.

Product Code	Description	Weight (kg)	External Dimensions W x D x H (mm)	Internal Dimensions W x D x H (mm)
PS3	3m PipeStor™	133	575 x 3220 x 815	Per compartment: 200 x 200 x 3220
PS6	6m PipeStor™	256	575 x 6420 x 815	Per compartment: 200 x 205 x 815

Note: Weights and dimensions are approximate. External dimensions include handles.



TOOL AND EQUIPMENT STORAGE





Our quick-assembly,  
flat-pack, modular  
solution for on-site  
secure storage

Forma-Stor™ is our popular secure store that can be constructed in as little as 10 minutes. With 5-lever deadlocks and jemmy-proof joins, the **Forma-Stor™** is the most robust flat-pack store around. An ideal solution for contractors who need quick and convenient storage, these walk-in units are constructed using galvanised panels that fasten neatly together with very few tools.

**armorgard**

# forma-stor™

CRANE  
LIFTING EYES

AVAILABLE IN 4  
STANDARD SIZES



»  
FORMA-STOR™  
IS DELIVERED  
FLAT-PACKED  
FOR EASY  
TRANSPORTATION

STACKED FLAT-PACKED  
PANELS

CAN BE DELIVERED  
PRE-ERECTED AT AN  
ADDITIONAL COST

FR200-T



FORKLIFT POCKETS  
FOR EASY  
TRANSPORTATION

STRONG FITTED  
OSB FLOOR

ERECTED SIMPLY AND  
EASILY WITH NO FUSS!  
INSTRUCTIONS INCLUDED

FULLY GALVANISED  
AND POWDER COATED  
FOR MAXIMUM DURABILITY

KEYED ALIKE 5 LEVER  
DEADLOCKS AND  
JEMMY-PROOF JOINS



»  
WATCH THE  
FORMA-STOR™ BEING  
BUILT IN 6 MINUTES



» "STRONG, SECURE AND STURDY. I WOULD CERTAINLY RECOMMEND IT"

**armorgard**

**forma-stor™**



FR100-T



FR400-T

»  
FORMA-STOR™ ACCESSORIES



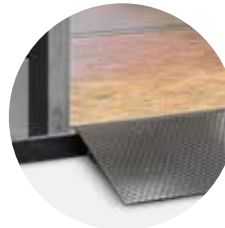
BLOKKABAR



200KG CERTIFIED SHELVES



LED LIGHTING



HEAVY-DUTY RAMP

»  
For on-site solutions, call our customer experience team.

Individual Panel Weight (kg)	End Panel	Door Panel	Side Panel	Roof Panel	Floor	Total
FR100-T	55.9	75.8	20.7	32.6	57.5	251
FR200-T	55.9	75.8	52.9	52.9	112.3	384
FR300-T	55.9	75.8	69.1	75.8	143	467
FR400-T	55.9	75.8	114	95.2	186	594

Product Code	Description	Weight (kg)	External Dimensions (including protrusions) W x D x H (mm)	Internal Dimensions W x D x H (mm)
FR100-T	Forma-Stor™	251	2075 x 1010 x 1935	2075 x 840 x 1795
FR200-T	Forma-Stor™	384	2075 x 2010 x 2065	2075 x 1850 x 1795
FR300-T	Forma-Stor™	467	2075 x 2960 x 2065	2075 x 2800 x 1795
FR400-T	Forma-Stor™	594	2075 x 3960 x 2065	2075 x 3800 x 1795
FRS2	Forma-Stor™ Shelf	20	1970 x 520 x 30	N/A
FRBL2	BlokkaBar	23	1960 x 170 x 110	N/A
FRR4	Forma-Stor™ Ramp	37	1185 x 750 x 100-195	N/A
FRLK-240	240V Forma-Stor™ Lighting Kit	5	N/A	N/A

Note: Weights and dimensions are approximate. External dimensions include handles.



# strimmersafe vault™

The ultra-tough, secure vault for storing trimmers and other long handled tools

The **StrimmerSafe Vault™** is a secure storage range specially designed for trimmers and similar long-handled tools. Suitable for use in vehicles or workshops, this highly secure vault benefits from an ultra-tough, anti-force construction and an innovative heavy-duty locking mechanism – once the lid is shut and locked, the trimmer is impossible to remove.



KEYED ALIKE 5-LEVER DEADLOCKS



STRONG GAS STRUTS FITTED AS STANDARD - CONFORM TO INDUSTRY STANDARDS

AVAILABLE IN 3 DIFFERENT SIZES

SNUG STORAGE POSITION KEEPS STRIMMERS SECURE



Product Code	Description	Weight (kg)	External Dimensions W x D x H (mm)	Internal Dimensions W x D x H (mm)
SSV12	StrimmerSafe Vault™	69	1285 x 525 x 460	1125 x 385 x 445
SSVX6	StrimmerSafe Vault™	63	1815 x 545 x 445	1660 x 430 x 435
SSV6	StrimmerSafe Vault™	141	1985 x 680 x 670	1830 x 550 x 580

Note: Weights and dimensions are approximate. External dimensions include handles.



# strimmersafe rack™

The unique upright storage system for securing your trimmers

Trimmers are among the most commonly stolen power tools. The **StrimmerSafe Rack™** is packed full of features to keep your equipment secure and organised whilst maximising on storage space.



KEYED ALIKE 5-LEVER DEADLOCKS WITH HEAVY-DUTY CHUBB STYLE KEYS

SUPPLIED FLAT PACKED

LID IS FITTED WITH 2 GAS STRUTS FOR EASY LIFTING



MUST BE BOLTED TO A WALL TO ENSURE SAFETY

HIGHLY SECURE UNIT TO PROTECT YOUR VALUABLE EQUIPMENT FROM THEFT AND DAMAGE

IDEAL FOR LANDSCAPERS AND GREENKEEPERS



LIQUID-TIGHT BASE CONTAINS ANY ACCIDENTAL SPILLS OF OIL OR FUEL

SSR

Product Code	Description	Weight (kg)	External Dimensions W x D x H (mm)	Internal Dimensions W x D x H (mm)
SSR6	StrimmerSafe Rack™	93	2055 x 540 x 2095	1935 x 305 x 265

Note: Weights and dimensions are approximate. External dimensions include handles.





## SECTION 02

### Work platforms and units

instagate™	40
tuffbench™	43
mobile tuffbench™	44
cuttingstation™	46
sitestation™	50

## SECTION 02

# WORK PLATFORMS AND UNITS



**armorgard**

# instagate™

An expandable barrier for crowd/traffic control in any location

InstaGate™ is a quick-to-deploy barrier that's robust and easy to extend to full length. Constructed from strong lightweight aluminium, this durable barrier can be wheeled into position, expanded and braked single-handedly. InstaGate™ forms a highly visible red and white barrier for enhanced safety in any situation, indoors or out.

InstaGate™ is available in two heights (4ft and 6ft).



» WATCH THE INSTAGATE™ IN ACTION



IG4

ANTI-TRAPPING FINGER SAFE SYSTEM TO IMPROVE USER SAFETY

POWDER COATED AND WEATHERPROOF

DESIGNED FOR HIGH VISIBILITY



SIMPLE TO USE CATCH, TO LOCK IN POSITION AND ATTACH MULTIPLE BARRIERS TOGETHER FOR WIDER OPENINGS

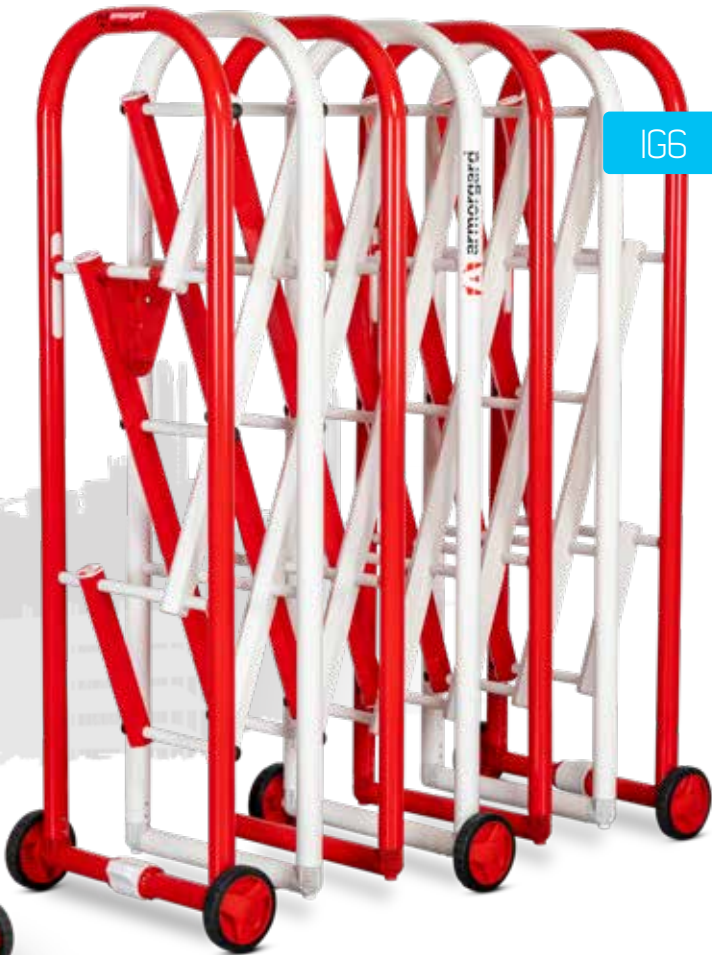
BRAKES TO SECURE IN PLACE

LIGHTWEIGHT, YET STRONG AND RIGID

WHEELS ALLOW FOR SIMPLE PORTABILITY



IG4



IG6

## » INSTAGATE™ ACCESSORIES



LINKING KIT - SECURELY LINK TOGETHER MULTIPLE INSTAGATE™



ANCHOR KIT - SAFELY FIX YOUR INSTAGATE™ TO A FLAT SURFACE



Product Code	Description	Weight (kg)	Folded Dimensions W x D x H (mm)	Extended Dimensions W x D x H (mm)
IG4	InstaGate™	30	1935 x 305 x 265	2160 x 520 x 1335
IG6	InstaGate™	40	410 x 520 x 1900	2330 x 535 x 1900

Note: Weights and dimensions are approximate. External dimensions include handles.





The versatile and easy-to-use mobile work platform from Armorgard

The TuffBench™ heavy-duty folding work platform is a versatile workbench designed for contractors on the move and for use on construction sites. Its quick and easy assembly system – with no detachable parts – makes it easy to transport and store. When it's time to move on, simply collapse the platform, fold the legs and you're ready to go! Durable and built to last, the surface is manufactured from sustainable pressed timber.

armorgard

# tuffbench™

BH10-HW



HEAVY-DUTY 300KG  
LOAD CAPACITY

DURABLE TIMBER  
WORK SURFACE

FOLDING LEGS  
SECURED WITH A  
CHAIN WHEN SHUT

METAL EDGE FLUSH  
WITH WOODEN WORK  
SURFACE

BH10

COLLAPSIBLE  
FOR EASY STORAGE  
AND TRANSPORTATION

POWDER-COATED FRAME  
FOR LONG-LASTING  
DEPENDABILITY

## OPTIONAL EXTRAS



6" ENGINEER'S VICE



4" CHAIN VICE



HANDLE AND WHEELS

NO DETACHABLE PARTS  
- STAYS TOGETHER  
AS ONE UNIT

IDEAL FOR FITTING A  
CHAIN VICE AND  
ENGINEER'S VICE TO

Product Code	Description	Weight (kg)	External Dimensions W x D x H (mm)	Folded Down Dimensions W x D x H (mm)
BH10	TuffBench™	28	1080 x 750 x 825	1080 x 750 x 135
BH10-HWF	TuffBench™ with Handle and Wheel Kit	31	1080 x 750 x 825	1080 x 750 x 135
BH10-HWVF	TuffBench™ + c/w Wheels, Handle, Chain Vice and Engineer's Vice	58	1140 x 855 x 970	1140 x 855 x 280
CV6	6" Engineer's Vice	22	N/A	N/A
CV4	4" Chain Vice	5	N/A	N/A
BH10-HW	Handle and Wheel Kit for TuffBench™	3	N/A	N/A

Note: Weights and dimensions approximate. External dimensions include handles.



**armorgard**

# mobile tuffbench™

The universal mobile workbench that's also a heavy-duty cabinet!

Use the Armorgard Mobile TuffBench™ for a day and you'll wonder how you ever got by without it. A combination of heavy-duty storage cabinet and multi-purpose work surface, this innovative workbench makes any job that bit easier, while ensuring that your tools and equipment remain safe from thieves and damage. Its ultra-tough surface is ideal for fixing a chain vice, engineer's vice and other equipment, making it indispensable for M&E contractors when pipe threading and bending.



OPTIONAL EXTRAS



6" ENGINEER'S VICE



4" CHAIN VICE



Product Code	Description	Weight (kg)	External Dimensions W x D x H (mm)	Internal Dimensions W x D x H (mm)
MBH12	Mobile TuffBench™	96	1200 x 700 x 950	995 x 660 x 520
MBH12-UF	Mobile TuffBench™ with Vices Fitted	125	1290 x 805 x 1080	915 x 640 x 515

Note: Weights and dimensions are approximate. External dimensions include handles.



A go-anywhere, multi-purpose cutting station with unrivalled safety features to minimise vibration, sparks, noise and dust

Our ever-popular Armorgard CuttingStation™ is a neat, mobile workstation that eliminates the need for a separate cutting room and is essential for safely cutting lengths of material, such as conduit, timber, cable tray and pipe. The SS7 model includes lighting and chamfered corners to further reduce noise. You'll also find a new expandable working area to accommodate mitre saws and cutaway sides for handling longer materials.

**armorgard**

# cuttingstation™

SWarf COLLECTOR WITH DUST EXTRACTOR CONNECTION

ADAPTABLE PVC CURTAINS TO CONTAIN SPARKS

RUBBER MAT TO REDUCE VIBRATION

SS7

RUBBERISED WHEELS FOR REDUCED VIBRATION

SECURE CABINET TO KEEP YOUR TOOLS SAFE

EXTENDABLE SUPPORT ARMS WITH 4 CONFIGURATIONS

KEYED ALIKE 5-LEVER DEADLOCK WITH CHUBB-STYLE KEYS

European Patent Application Number: EP17183824.6

European Community Design Registration Number: 004511525



WORK PLATFORMS AND UNITS





# cuttingstation™

SS7X

EXTRACTION SYSTEM  
HELPS TO CONTAIN DUST  
AND REDUCES EXPOSURE  
TO HARMFUL SUBSTANCES

SS7C

SS7C UNIVERSAL CLAMP HOLDS  
ELECTRIC SAWS IN PLACE TO  
IMPROVE HEALTH AND SAFETY.  
COMPATIBLE WITH SS7 AND SS7X

LIFTING EYES  
TO ALLOW FOR  
TRANSIT BY CRANE

FORK SKIDS  
FOR EASY  
TRANSPORTATION

WORKS PERFECTLY  
WITH THE HUSQVARNA  
AIR SCRUBBER

HEAVY-DUTY  
ALL-SWIVEL  
WHEELS FOR  
GOOD MOBILITY

» For on-site solutions, call our customer experience team.

» OPTIONAL EXTRAS

EASY ACCESS  
WITH CUT-OUT  
FRONT

PROVISION FOR  
ATTACHING A  
VACUUM HOSE

EXTENDABLE BACK  
PANEL FOR EXTRA  
WORKSPACE TO CATER  
FOR MITRE SAWS

NARROW ENOUGH  
TO FIT THROUGH  
STANDARD  
DOORWAYS

» THE 4 CONFIGURATIONS OF THE  
EXTENDABLE SUPPORT ARMS

FLAT SURFACE  
IDEAL FOR LONG  
LENGTHS

ROLLER SURFACE  
IDEAL FOR LONG  
LENGTHS

V-SHAPE  
IDEAL FOR  
ROUND PIPES

FLAT EDGE  
IDEAL FOR LONG  
LENGTHS

Product Code	Description	Weight (kg)	External Dimensions W x D x H (mm)	Internal Dimensions W x D x H (mm)
SS7	CuttingStation™	175	1360x770x1905	900x710x500 (Base)
SS7X	CuttingStation™ with Extraction System	200	1360x770x1905	900x560x500 (Base)
SS7C	CuttingStation™ Clamp	4	1000 x 550 x 30	N/A

Note: Weights and dimensions are approximate. External dimensions include handles.



**armorgard**

# sitestation™

**A purpose-built solution for your on-site work station needs**

The innovatively designed Armorgard SiteStation™ gives you a convenient place for routine on-site tasks, while also providing secure storage for your valuable equipment. The top section features a folding slanted work surface – ideal for displaying plans and charts – that provides additional lockable storage when shut – ideal for power tools, PPE and fixings.



» For on-site solutions, call our customer experience team.

## » MOBILE ON-SITE OFFICE



» WATCH THE SITESTATION™ IN ACTION

Product Code	Description	Weight (kg)	External Dimensions W x D x H (mm)	Internal Dimensions W x D x H (mm)
SS2	SiteStation™	223	1400 x 845 x 1965	Top: 1300 x 800 x 900 Bottom: 1175 x 735 x 415

Note: Weights and dimensions are approximate. External dimensions include handles.



Revolutionise the way your team delivers projects with this compact on-site digital station complete with a 43-inch screen, three power outlets and LED lighting

armorgard  
datastation™

Quickly access all the information at your fingertips, power your laptop and view your up-to-date plans, procedures, and documents digitally. The DataStation™ is a simple addition that shows real commitment towards the industry 4.0, allowing you to work sustainably and efficiently away from the office. Easily manoeuvrable with heavy-duty castors, so you can take it wherever you need it.

Armed with effective security: keyed -alike 5-lever deadlocks for secure storage of valuable office equipment or power tools.



DS2AU

DIGITAL SCREENS UP TO 43-INCHES

POCKETS ON DOORS FOR FILES OR PRINT OUTS

WORKING SHELF WITH LOCKABLE STORAGE AREA

240V POWER SUPPLY TO CHARGE ELECTRICAL EQUIPMENT

HEAVY-DUTY CASTORS FITTED AS STANDARD FOR EASY MOBILITY



FORK SKIDS AND CRANE LIFTING EYES FOR EASE OF TRANSPORTATION

WEATHER-PROOF, WIPE CLEAN, DURABLE SURFACE

POWDER COATED FOR MAXIMUM DURABILITY

FULL-WIDTH SHELVES IN BOTH LOWER AND UPPER COMPARTMENTS



Product Code	Description	Weight (kg)	External Dimensions W x D x H (mm)	Internal Dimensions W x D x H (mm)
DS2AU	DataStation AU™	235	1400x845x1965	Top: 1175x735x885 Bottom: 1175x735x400

Note: Weights and dimensions are approximate. External dimensions include handles.





## SECTION 04

# MANUAL HANDLING PRODUCTS



## SECTION 03

### Manual handling products

piperack™	63
bundlerack™	66
loadall™	67
rubble truck™	72
flexikart™	74
v-kart™	76
beamkart™	76
turntable truck™	77





**The adaptable  
mobile on-site  
pipe and conduit  
storage solution**

**armorgard**

**piperack™**

The Armorgard **PipeRack™** is an innovatively designed wheeled storage rack that keeps your pipes organised and easy to manoeuvre whilst working on-site. Each unit has been tested and certified to guarantee a top-quality product that is durable and built to last. The fully collapsible design means that it can be easily transported and stored when not in use. **PipeRack™** is available with either a 1-tonne or 2-tonne capacity.



PR2



STACKABLE  
UP TO 6 UNITS HIGH

ALL STEEL  
HEAVY-DUTY  
CONSTRUCTION

POWDER-COATED  
FINISH FOR ULTIMATE  
PROTECTION

UNIQUE FULLY  
FOLDING DESIGN

FITTED WITH  
ULTRA-ROBUST  
INDUSTRIAL  
SWIVEL CASTORS



For on-site solutions, call our customer experience team.



» INNOVATIVE AND UNIQUE  
FULLY FOLDING DESIGN

**armorgard**  
**piperrack™**

PR1



PR2



»  
OPTIONAL EXTRAS



STRONG ATTACHABLE  
SAFETY HANDLE



LINKING KIT TO JOIN  
THE TWO PIPERACK™  
TOGETHER (PRLK)



UPGRADE KIT FROM  
1 TONNE TO 2 TONNE  
CAPACITY (PRUK)



CASTOR DIRECTION  
LOCK ADAPTORS  
(LDLF)

Product Code	Description	Weight (kg)	External Dimensions W x D x H (mm)	Folded Down Dimensions W x D x H (mm)	Weight Loading
PR1	PipeRack™	83	1560 x 1010 x 1570	1560 x 1010 x 560	1 Tonne
PR2	PipeRack™	101	1560 x 1010 x 1570	1560 x 1010 x 560	2 Tonne
PR-SH	PipeRack™ Handle	0.6	94 x 165 x 90	N/A	N/A
PR-LK	PipeRack™ Linking Kit	15	N/A	N/A	N/A
PR-UK	PipeRack™ Upgrade Kit	20	N/A	N/A	N/A

Note: Weights and dimensions are approximate. External dimensions include handles.



The mobile rack for easy transport and storage of large bundles of materials

The Armorgard **BundleRack™** is a simple and effective means of transporting and storing large bundles of materials. It allows you to organise your materials on-site to optimise space, while ensuring they are quick and easy to move when needed. Designed to a high-quality, heavy-duty specification with a powder-coated finish, **BundleRack™** is built to last. The unit can be folded and stacked for easy storage when not in use.

**armorgard**  
**bundlerack™**



Product Code	Description	Weight (kg)	External Dimensions W x D x H (mm)	Folded Down Dimensions W x D x H (mm)	Weight Loading
BR1	BundleRack™	79	1560 x 1010 x 1030	1560 x 1010 x 555	1 Tonne

Note: Weights and dimensions are approximate. External dimensions include handles.

The unique space-saving trolley for transporting large sheets of board

Save space, make handling easier and protect your materials from damage using **LoadAll™ LA750**. Whether in the yard or on-site, transporting large sheets of board has never been easier. Specially designed for storing and transporting plasterboard and other large sheet materials.

**armorgard**  
**loadall™**  
**LA750**







The unique space-saving trolley for transporting large sheets of board

**armorgard**

# loadall™ LA750-PRO

Save space, ease manual handling and protect your materials with the **LoadAll™ LA750-PRO**. The combination of the H-frame design and innovative clamping system with the swivel wheels and telescopic handle make the LA750-Pro easy to manoeuvre when carrying a full load of sheet materials through doorways and around corners.



LA750-PRO

SECURE THE LOAD WITH UNIQUE CLAMP SYSTEM

UNIQUE H-FRAME DESIGN MAKES ACCESS THROUGH DOORWAYS EASIER

EXTENDING HANDLE TO ACCOMMODATE DIFFERENT BOARD SIZES

SIDE LOADING FACILITY WITH EASY-GRAB HANDLES

ROBUST CONSTRUCTION USING 3 & 5MM STEEL

CAN BE EASILY COLLAPSED WITH NO DETACHABLE PARTS

HEAVY-DUTY CASTORS ALL SWIVEL AND 2 BRAKED FOR MAXIMUM CONTROL OF UNIT

ROBUST POWDER COAT



» WATCH THE  
LOADALL™ LA750-PRO  
IN ACTION





**armorgard**

# loadall™ LA1000

The unique space-saving  
trolley for transporting  
large sheets of board

LoadAll™ LA1000 is the only trolley of its kind on the market that can be folded and stacked when not in use. It also has no detachable parts! Its A-frame design allows it to be loaded on both sides, maximising its space-saving efficiencies.



LA1000

CENTRE A-FRAME DESIGN  
MEANS THAT WHEN  
LOADED, ALL WEIGHT IS  
LEANING INTO THE  
CENTRE

CARRIES UP TO 24 SHEETS  
OF PLASTERBOARD  
- APPROXIMATELY 60%  
MORE THAN ALTERNATIVE  
PRODUCTS

PROVISION FOR STRAPPING  
BOARDS IN PLACE  
- IMPROVING SAFETY WHEN  
ON-SITE

COMPLETE WITH SAFE  
WORKING LOAD PLATES,  
CERTIFYING A CAPACITY  
OF UP TO 1 TONNE

HEAVY-DUTY CASTORS  
FOR EASY MOBILITY



ONE-PIECE DESIGN  
KEEPS UNIT TOGETHER AND  
PREVENTS LOSS OF PARTS



FOLDING & STACKABLE UNIT  
- TIDY AND EASY TO STORE  
WHEN NOT IN USE

**armorgard**

# loadall™ LA1500

A unique space-saving  
trolley for transporting  
large sheets of material

Ease manual handling, save space and protect your materials from damage with the LA1500. Specially designed for storing and transporting large sheet materials. The wooden slats make it a great option for moving large sheets of glass too.



LA1500

STURDY CONSTRUCTION  
OUT OF 50X50MM AND  
50X25MM BOX SECTION



200MM DIAMETER WHEELS  
- ALL SWIVEL, 2 COMPLETE  
WITH BRAKES

FIXING POINTS TO SECURE  
THE MATERIALS TO  
THE TROLLEY



Product Code	Description	Weight (kg)	External Dimensions W x D x H (mm)	Folded Down Dimensions W x D x H (mm)	Weight Loading
LA750	750kg LoadAll™	41	1340 x 550 x 1220	1340 x 550 x 420	750kg
LA1000	1 tonne LoadAll™	49	1250 x 750 x 1440	1250 x 750 x 505	1 Tonne
LA1500	1.5 tonne LoadAll™	125	2020 x 900 x 1615	N/A	1.5 Tonne
LA750-PRO	750kg LoadAll™ with Clamp	70	2455 x 600 x 2030	1705 x 550 x 445	750kg

Note: Weights and dimensions are approximate. External dimensions include handles.

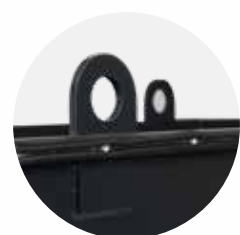


**armorgard**

# rubble truck™

Our multi-purpose  
Rubble Truck™  
features an in-built  
tipping feature, ideal  
for handling waste  
and rubble

Ergonomically designed for maximum performance and efficiency, the **Rubble Truck™** has an array of unique features to create an indispensable on-site companion. Our multi-purpose **Rubble Truck™** features a huge 400-litre capacity scoop, extra strength crane lifting eyes, and solid rubber wheels. When the day's over, the unique stackable design means you can maintain a working space that's safe and clutter free.



CRANE LIFTING EYES  
- WELDED FOR  
EXTRA STRENGTH



RUBBER BUFFERS  
FOR SIDE PROTECTION

OVER 400L  
CAPACITY SCOOP

EASY UNLOADING



RT400

BUILT-IN  
TIPPING FEATURE

SOLID RUBBER  
PUNCTURE  
PROOF WHEELS

ROBUST  
CONSTRUCTION  
ENGINEERED  
FOR HEAVY USE

IDEAL FOR HANDLING  
MATERIALS, WASTE  
OR RUBBLE



For on-site solutions, call our customer experience team.

UNIQUE STACKABLE DESIGN



»  
OPTIONAL EXTRA



RT-L

HEAPED LID TO  
PREVENT ITEMS INSIDE  
FALLING OUT. INCREASES  
LOAD CAPACITY BY UP TO 160L



Product Code	Description	Weight (kg)	External Dimensions W x D x H (mm)	Internal Dimensions W x D x H (mm)	Weight Loading
RT400	Rubble Truck™	88.5	1465 x 755 x 945	1300 x 675 x 655	750kg
RTHL	Rubble Truck™ Lid	19	770 x 1405 x 260	580 x 1400 x 210	N/A

Note: Weights and dimensions are approximate. External dimensions include handles.



A multi-purpose, space-saving, stackable, sturdy and ergonomically friendly unit

Mobilise your materials with the **FlexiKart™**, a safe, multi-purpose folding pallet skate. With a 750kg load capacity, this super-neat and sturdy trolley is ideal for storing materials off the ground and moving them around on-site, even through narrow corridors and doorways.

armorgard  
flexikart™

ABLE TO HOLD 1200 X 1000 PALLET SIZES WHEN ALL 4 SUPPORT ARMS ARE LOCKED UPRIGHT

ALL 4 SUPPORT ARMS CAN BE RAISED INDIVIDUALLY AS REQUIRED. WHEN NOT IN USE, THEY FOLD BELOW THE BED HEIGHT

WITH THE SUPPORT ARMS FOLDED DOWN, THE FLEXIKART™ CAN ACCOMMODATE LARGER LOADS, OR CAN BE TWINNED WITH A SECOND FLEXIKART™ FOR LONG LOADS SUCH AS METAL BEAMS, WOOD, PIPE, CONDUIT AND OTHER MATERIALS

FK2



A ROBUST PALLET SKATE WHICH INCREASES SAFETY AND REDUCES PHYSICAL STRAIN WHEN MANOEUVRING LOADS MANUALLY

BUILT-IN LASHING POINTS ALLOW LOADS TO BE SECURED, WHICH SAFELY PREVENTS THEM FALLING OFF WHEN MANOEUVRING

FOUR SWIVEL CASTORS (TWO BRAKED) FOR EASY MANOEUVRABILITY

STACKABLE FOR MAXIMUM SPACE EFFICIENCY



For on-site solutions, call our customer experience team.

Product Code	Description	Weight (kg)	External Dimensions (Folded) W x D x H (mm)	Internal Dimensions (Unfolded) W x D x H (mm)	Weight Loading
FK2	FlexiKart™	62	1260 x 745 x 395	1135 x 630 x 880	750kg

Note: Weights and dimensions are approximate. External dimensions include handles.

armorgard  
spoolkart™

A unique and robust mobile trolley to store, organise and efficiently dispense cable spools

The **SpoolKart™** is a sturdy yet mobile kart for storing, organising and operating with multiple cable spools. A unique solution to keep your equipment accessible. With three easy loading bars, three anti-tangle cable dispensers and a lockable built-in storage box, the **SpoolKart™** can take on a load that no other can.

BUILT-IN LOCKABLE STORAGE CASE

THREE ANTI-TANGLE CABLE DISPENSERS SUPPLIED AS STANDARD FOR EASE OF USE

SPK2

SOLID RUBBER PUNCTURE-PROOF WHEELS FOR EASY TRANSPORTATION ACROSS ALL TERRAINS

ROBUST 2.5 MM STEEL CONSTRUCTION WITH POWDER COATING FOR MAXIMUM DURABILITY

» "IT'S SO HANDY, WE NO LONGER HAVE TO BUILD OUR OWN CABLE MANAGEMENT SOLUTION!"

Product Code	Description	Weight (kg)	External Dimensions W x D x H (mm)	Internal Dimensions W x D x H (mm)
SPK2	SpoolKart™	52	740 x 840 x 1365	560 x 840 x 1365

Note: Weights and dimensions are approximate. External dimensions include handles.



## armorgard v-kart™



POWDER COAT WITH  
ANTI-CORROSIVE  
UNDERCOAT

SOLID RUBBER  
WHEELS

STURDY HANDLE  
HELPS TO REDUCE  
BACK STRAIN  
DURING USE



VK2

A heavy-duty cart  
used for handling long  
lengths of material

Designed to make life easier for  
those manoeuvring pipe, steel  
sections and other round lengths  
of material on construction sites.

Product Code	Description	Weight (kg)	External Dimensions W x D x H (mm)	Internal Dimensions W x D x H (mm)
VK2	V-Kart™	35	1230 x 835 x 900	Up to Ø385

Note: Weights and dimensions are approximate. External dimensions include handles.

Designed to be a  
heavy-duty kart, ideal  
for handling long  
lengths of material

The **BeamKart™** is designed for the  
effortless transportation of beams and  
steels. Robust enough for life on-site,  
yet nimble enough to quickly become an  
essential for the everyday movement of  
heavy and bulky items. The **BeamKart™**  
boasts puncture-proof solid rubber  
tyres, is available in two sizes, and is  
finished to the standards you've come  
to expect from Armorgard.

## armorgard beamkart™



BK1

ROBUST  
CONSTRUCTION  
USING 3MM STEEL

POWDER-COATED FINISH  
FOR MAXIMUM DURABILITY

BK2 HAS NO UPRIGHT  
SIDES. ENABLES HANDLING  
OF WIDER MATERIALS

BK2

PUNCTURE-PROOF TYRES  
FOR EASY AND SAFE  
MANOEUVRING ON-SITE

Product Code	Description	Weight (kg)	External Dimensions W x D x H (mm)	Internal Dimensions W x D x H (mm)	Weight Loading
BK1	BeamKart™	19.8	350 x 515 x 250	N/A	500kg
BK2	BeamKart™	27	400 x 505 x 265	N/A	500kg

Note: Weights and dimensions are approximate. External dimensions include handles.

armorgard

## turntable truck™

For transporting bulk  
quantities of material  
and equipment

Our **Turntable Truck™** has been engineered  
to take the full strain of transporting bulk  
quantities of material and equipment when  
you really need it, reducing the physical  
impact for workers on construction sites.

POWDER-COATED FINISH  
FOR MAXIMUM DURABILITY

RAISED HEAVY-DUTY DECK  
FOR GOOD GROUND  
CLEARANCE AND EASY  
LOADING

SOFT GRIP HANDLES



TT1



PRECISION STEERING MECHANISM  
FOR EASY MANOEUVRING

LARGE PUNCTURE-PROOF  
SOLID RUBBER WHEELS

» ENQUIRE ABOUT THE  
DEADMAN BRAKE SYSTEM

Product Code	Description	Weight (kg)	External Handle Down Dimensions W x D x H (mm)	External Handle Folded Back Dimensions W x D x H (mm)	Weight Loading
TT1	Turntable Truck™	93	2500 x 470	1570 x 690 x 745	1000kg

Note: Weights and dimensions are approximate. External dimensions include handles.





## SECTION 04

### Hazardous goods storage

tuffcage™	80
gorilla gas cage™	81



## SECTION 05

# HAZARDOUS GOODS STORAGE





The one-piece folding security cage for storing your gas cylinders and costly equipment

The ingeniously designed **TuffCage™** is the answer to a wide range of on-site security needs. Constructed from galvanised heavy-duty steel, this robust high-security cage is suitable for storing gas cylinders as well as tools and equipment.

**armorgard**  
**tuffcage™**



SUITABLE FOR SECURING TOOLS AND EQUIPMENT AS WELL AS GAS CYLINDERS

RELEVANT HAZARDOUS WARNING SIGNAGE

QUICK AND EASY TO ERECT AND DISMANTLE

EASILY STACKED WHEN FOLDED DOWN, SAVING ON SPACE

FORKLIFT SKIDS FOR EASY TRANSPORTATION

TC1.2



ONE-PIECE CONSTRUCTION WITH NO REMOVABLE PARTS



2 SECURE PADLOCK POINTS



GALVANISED FOR MAXIMUM DURABILITY IN ALL WEATHER



FOLDS DOWN TO A HEIGHT OF JUST 180MM AND CAN BE STACKED UP

Product Code	Description	Weight (kg)	External Dimensions W x D x H (mm)	Internal Dimensions W x D x H (mm)	No. Standard Size Gas Bottles
TC1.2	TuffCage™	133	1150 x 1750 x 1750	1305 x 1240 x 1795	47/19

Note: Weights and dimensions are approximate. External dimensions include handles.

The unique galvanised security cage specially designed for storing gas cylinders

Robustly constructed using 25mm box sections and 3mm wire mesh, the **Gorilla Gas Cage™** features a unique modular bolt-together design using individual galvanised panels, making it quick and easy to erect and dismantle. Suitable for use on site or in the storage yard, it comes complete and ready to erect with all fixings and flat packs when not in use.

**armorgard**

**gorilla gas cage™**



GGC3

GGC6

Product Code	Description	Weight (kg)	External Dimensions W x D x H (mm)	Internal Dimensions W x D x H (mm)
GGC1	Gas Bottle Cage	40	1015 x 570 x 935	950 x 500 x 850
GGC3	Gas Bottle Cage	60	915 x 580 x 1835	850 x 500 x 1750
GGC4	Gas Bottle Cage	68	1215 x 1270 x 1235	1150 x 1200 x 1150
GGC5	Gas Bottle Cage	67	915 x 970 x 1835	850 x 900 x 1750
GGC6	Gas Bottle Cage	87	1215 x 1270 x 1835	1150 x 1200 x 1750
GGC7	Gas Bottle Cage	98	1815 x 970 x 1835	850 x 900 x 1750
GGC8	Gas Bottle Cage	108	1815 x 1270 x 1835	850 x 1200 x 1750
GGC9	Gas Bottle Cage	135	1815 x 1880 x 1835	850 x 1800 x 1750
GGC10	Gas Bottle Cage	165	2415 x 1870 x 1835	1150 x 1800 x 1750
GGC11	Gas Bottle Cage	188	2715 x 1880 x 1835	850 x 1800 x 1750
GGC12	Gas Bottle Cage	182	2415 x 2480 x 1835	1150 x 2400 x 1750
GGC13	Gas Bottle Cage	226	2415 x 3680 x 1835	1150 x 3600 x 1750
GGC14	Gas Bottle Cage	270	2415 x 4880 x 1835	1150 x 4800 x 1750
GGC15	Gas Bottle Cage	314	2415 x 6080 x 1835	1150 x 6000 x 1750
GGC16	Gas Bottle Cage	279	3665 x 1830 x 1835	1150 x 1750 x 1750
GGC17	Gas Bottle Cage	205	3662 x 1810 x 1831	3600 x 1750 x 1800

Note: Weights and dimensions are approximate. External dimensions include handles.





## SECTION 06

### Replacement keys and parts



#### Lost keys?

We also hold in stock replacement keys for our products for up to 5 years after purchase, so we can get you quick access should you lose your keys. Each product carries a unique serial number, and this enables us to locate your exact key and despatch immediately.



#### Spare parts

To complement our extensive range, we also hold in stock a vast supply of spare parts for our products. This enables us to deliver quickly and fulfil any replacement requirements.



#### Castors

**Added flexibility for many of our products.**

High-quality, heavy-duty castor sets with a unique quick-fit system. Replacements available for simply bolting on yourself, using the pre-drilled holes.



#### Keys

Product Code	Description
KEY	Replacement Deadlock Key
KEY3	Replacement Deadlock Key - Set 3



#### Castors

Product Code	Description	Contains	Loading Capacity
CAS	6" Castors (Supply Only) c/w Fixing Kit	2x Fixed, 2x Swivel-Braked Castors	135kg
CAS-HD	6" Heavy-Duty Castors (Supply Only) c/w Fixing Kit	2x Swivel, 2x Swivel-Braked Castors	350kg
LDLF	Castor Direction Lock Adaptors		
CAS-200	Castors for LA1500	2x Swivel, 2x Swivel-Braked Castors	500kg

#### Shelves

Product Code	Description
SHFC1	Shelf c/w Brackets for TSC1
SHFC2	Shelf c/w Brackets for TSC2 and FC2
SHFC3	Shelf c/w Brackets for TSC3 and FC3
SH4-OX	Shelf for OX4
FRS2	2m Shelf for Forma-Stor™ Tool
TBS4	Shelf for TB2, TB12, TB3 & TBC4
TBDS4	Shelf for TBC4
TBDS5	Shelf for TBC5
TBS4P	PowerShelf for TB2, TB12, TB3 & TBC4
TBDS4P	PowerShelf for TBC4
TBDS5P	PowerShelf for TBC5



#### Locks

Product Code	Description
LOCK2	Pair 5 Lever Deadlocks
LOCK1	Single 5 Lever Deadlock



#### Gas struts and lid stay

Product Code	Description
G300	300N Gas Strut
G300S	300N Short Gas Strut
G450	450N Gas Strut
G1000	1000N Gas Strut
G1200	1200N Gas Strut
STAY1	Lid support stay for boxes
STAY2	Lid support stay for chests
SLM2	SlamStop lid stay short
SLM3	SlamStop lid stay long



#### fittingstor™ bins

Product Code	Description	Available for
FCB	Storage Bins for FittingStor™	FC2, FC3, FC4, FC5, FC6



Do you need any other spare parts?  
We can help! Talk to our team to find out more.





Find us on social media:



#### **Australia Office**

Armorgard Australia PTY Ltd, 100 Silverwater Rd, Silverwater NSW 2128

Call **1300 131 751**

Email **sales@armorgard.com.au**

**www.armorgard.com.au**



#### **New Zealand Office**

Armorgard NZ, 15 Raiha St, Porirua 5022, Wellington, NZ

Call **04 280 6440**

Email **sales@armorgard.co.nz**

**www.armorgard.co.nz**



#### **USA Office**

185 Alewife Brook Pkwy #210, Cambridge, MA, United States

Call **1-877-794-2848**

Email **info@armorgardusa.com**

**www.armorgardusa.com**



#### **Canada Office**

251 Saulteaux Crescent #207, Winnipeg, MB R3J 3C7, Canada

Call **1-877-794-2848**

Email **info@armorgardusa.com**

**www.armorgardusa.com**



#### **UK Head Office**

call **+44 (0) 23 9238 0280**

email **sales@armorgard.co.uk**

**www.armorgard.co.uk**



#### **France Office**

call **+ 33 (0) 4 81 16 06 69**

email **commercial@armorgard.fr**

**www.armorgard.fr**