

THERMAL BINDING ACCELERATED BY DROP&GO TECHNOLOGY

Accel cube

MAXIMUM EFFICIENCY

You'll get faster, stronger binding in a flash with our next generation of high-performance, off-line, automated, binding machines. The new Accel series boasts the fastest and most productive binding speed in the industry.

- Greater strength and quality for your documents
- More efficient than ever



Bindomatic has enhanced our Drop&GoTechnology, making the Accel Cube an amazing two times faster than the previous generation, 45x faster than punch and bind, and 30x faster than tape binding. Rivalled only by the Bindomatic® Ultra, documents move through the machine at the rate of 60 documents per minute — dramatically boosting efficiency. The Cube features additional upgrades including increased quality and strength of the bound documents as well as improved appearance of the machine.

Successor to the 7000, the Cube is the ideal binding solution for office/corporate walk-up print stations, as well as volume demanding CRD or commercial print environments. It delivers professionally-bound documents, without the need of trained operators.

The Bindomatic® Accel Cube is available to buy or for lease.

Contact your Binding Efficiency Expert for details.



BONUS! System includes additional desktop unit for editing.

DOCUMENT SIZE

A4 — portrait bound orientation

SYSTEM CAPACITY

From 1 to 150 sheets of 80 gsm paper.

PROCESSING SPEED

Load up to 4 documents at one time.
Bind one document every second.

Performance is subject to user environment.

DOCUMENT SPINE WIDTH

from 1.5 to 15 mm

MACHINE DIMENSIONS

L 511 x W 475 x H 360mm

MACHINE WEIGHT

28 kg

POWER SUPPLY

230V, 50/60Hz

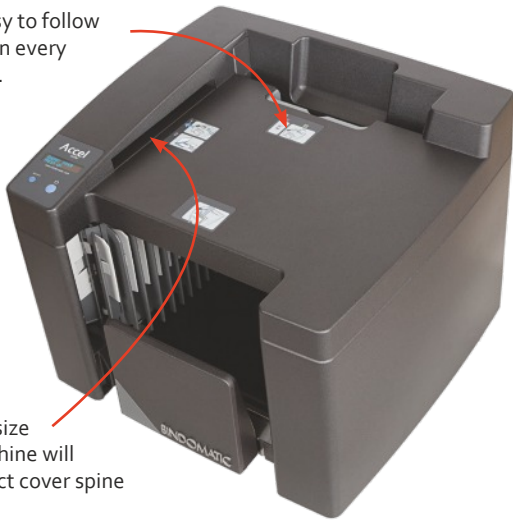
BINDOMATIC®
BINDING EFFICIENCY EXPERTS



HOW DROP&GO WORKS

A. FRONT AND RIGHT SIDE

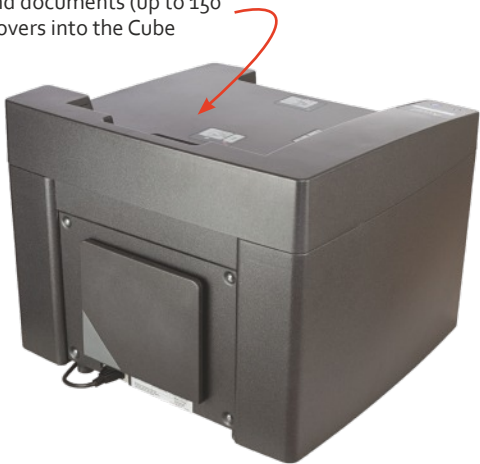
Step-by-step, easy to follow instructions are on every Bindomatic Cube.



Once pages are placed in the automatic cover size selector, the machine will display the correct cover spine width to use.

B. BACK AND LEFT SIDE

Insert unbound documents (up to 150 sheets) and covers into the Cube



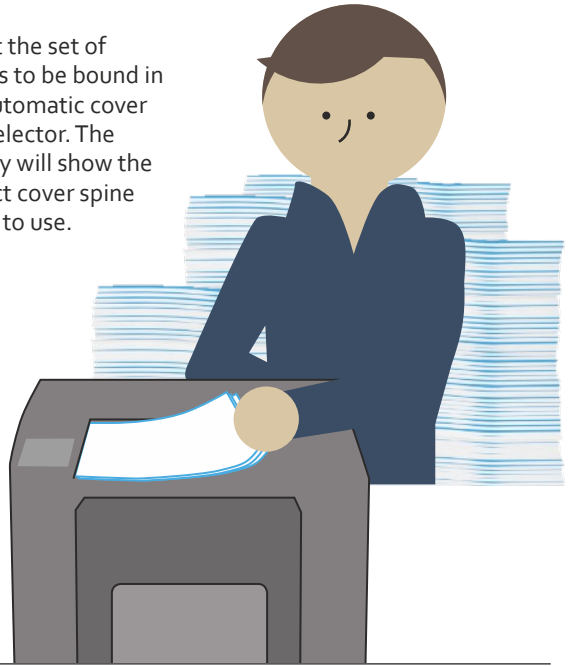
C. FRONT AND LEFT SIDE



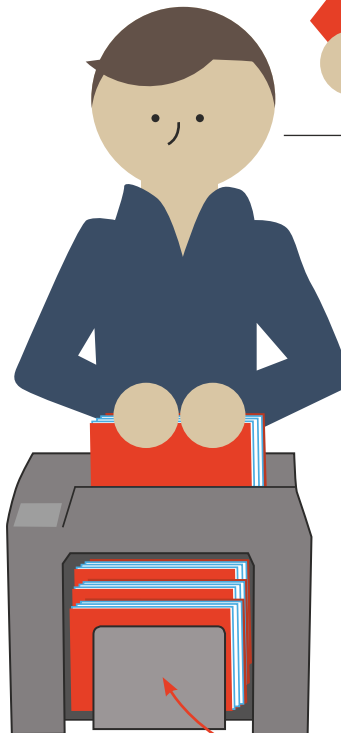
The thermal binding belt fuses your document pages and covers together in seconds, then moves the finished documents to the cooling tray.

The cooling tray expands to accommodate your documents as they emerge; bound and ready to use.

1. Insert the set of papers to be bound in the automatic cover size selector. The display will show the correct cover spine width to use.



2. Place document pages in a Bindomatic cover, with the correct spine size, and align.



3. **DROP** the ready-to-bind document when the green LED indicator light is lit.

4. **GO!** The machine will signal when the thermal binding process is complete. Remove the bound document(s) from the front tray.