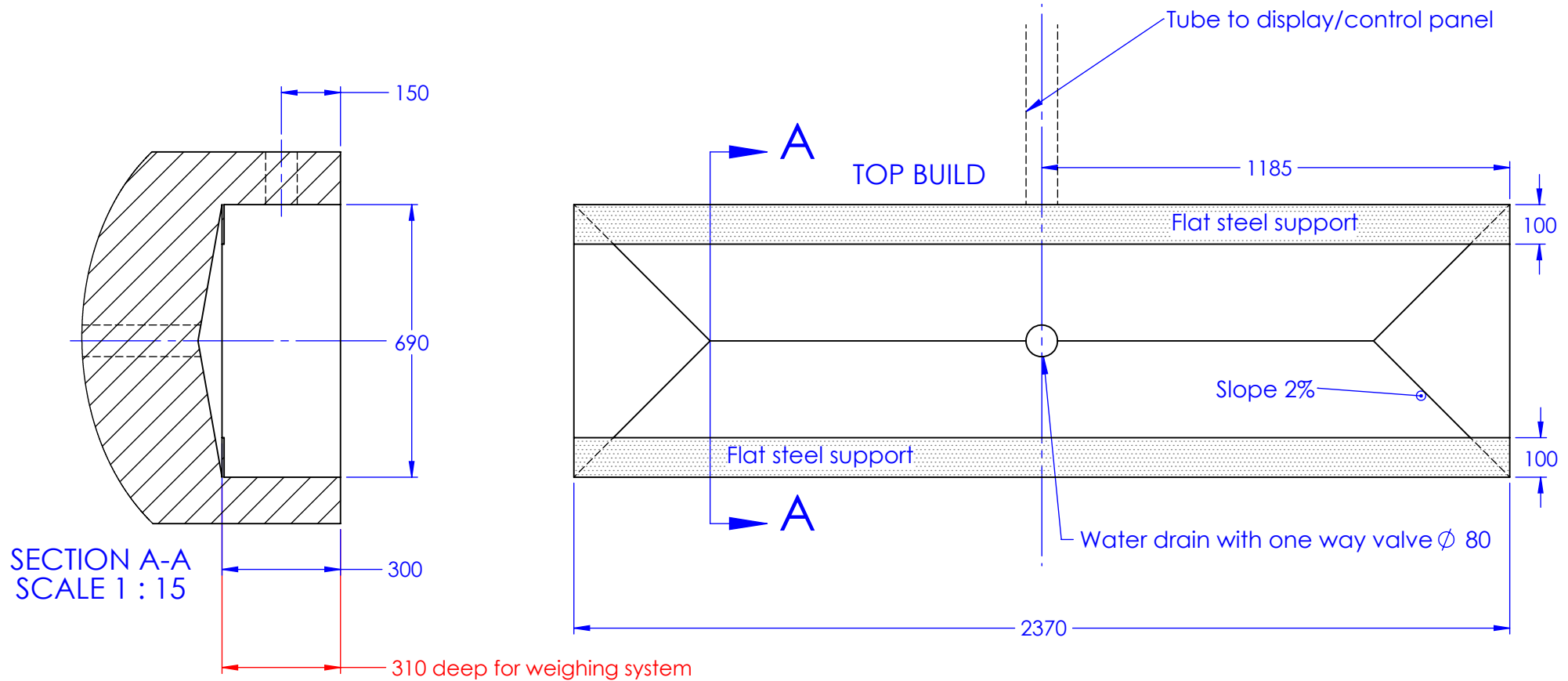


**NOTES:**

1. Dimensions in millimetres (1000mm = 1m)
2. Admissible floor load: >30 kN/m<sup>2</sup>.
3. Recommended distance between RBT and display: 2.5 – 5m.
4. Use PVC conduit of 80mm diameter between pit and display. Pipe opening should be located centrally in the long side and the height of the pit.
6. Motor cable and sensor cables can run through the same conduit.
7. The two flat surfaces should be level within 5mm. For heavy-duty use, the two flat surfaces (2370 x 100mm) should be reinforced by inserting steel beams or angled profiles of 100 x 100 x 10mm.
8. A separate dedicated 3-phase mains supply 400V / 32A with ground + neutral is required. A 4-pole safety switch should be mounted on the wall at 150mm from the console.
9. The RBT must be fixed in the pit unless a weighing system is fitted.
10. Overall net pit dimensions: 2370 x 690 x 300mm. (310mm deep to accommodate weighing system)
11. Overall equipment dimensions: 2340 x 660 x 300mm. (310mm with weighing system)



**DISCLAIMER:**

This drawing is intended as a general suggestion of a floor layout. The final construction must be carried out by your local installer who will be responsible for complying with legal and safety requirements.

DOC: BOS0021

			DRAWN IN ACCORDANCE WITH B.S.308	Material	Drawn	Title		
			DIMENSIONS IN MILLIMETRES		D-Rodríguez	D401 / D401S / D402 Groundwork		
			DO NOT SCALE		Finish	Date	Schematic - No Installation cartridge	
			Tolerances Unless Otherwise Stated		B-Calcutt	Drg. No.	Issue	
			Angular ±		11/03/2016			160229_2
			UNLESS OTHERWISE STATED	Original Scale	Approved			
Issue	Date	Amendment	REMOVE ALL SHARP CORNERS			FIRST ANGLE PROJECTION		

**boston**  
GARAGE EQUIPMENT

© This print is the property of Boston Garage Equipment and is a confidential document. It must not be traced copied or exhibited to a third party without permission in writing.