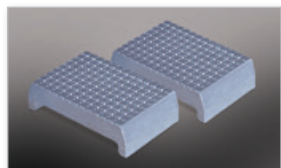


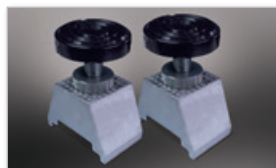
Boston jacking beams are second to none. They make life easier and safer for thousands of garages and commercial workshops that demand reliability. With double extension top beams and a range of vehicle specific lifting adapters, a new standard for safety has arrived.

Our vehicle lift range covers several different load capacities, from 2.0 tonne to 6 tonne, and for commercial pits right up to 20 tonne. The BJB20 is our smallest lift-mounted model but has a hefty 2.0 tonne lifting capacity. Most commonly used in Class 4 testing stations, this jack has a double extending top beam for extra wide reach; ideal for the larger vehicles now common in the UK market. As an alternative, the BJB20D has the same lifting capacity but is neatly packed into a slim-line chassis for use on sports vehicles with lower suspension and ride height.

All beams are available with manual or pneumatic operation, together with a range of lifting accessories to ensure safe lifting whatever the load.



Low Profile Lifting Blocks



Adjustable Height Raiser Blocks



Rubberised Lifting Pad



High Quality Finish



Boston Jacking Beam Features

- ① Double extending top beam
- ② Adjustable height screw pad
- ③ Scissor action lifting mechanism
- ④ Adjustable mounting arm
- ⑤ Height extension storage tray
- ⑥ Wide low-profile chassis



Load Capacity from 2.0 tonne



Manual or Pneumatic Operation

BOS0516

All images shown for illustration purposes only.