

Boston BPC

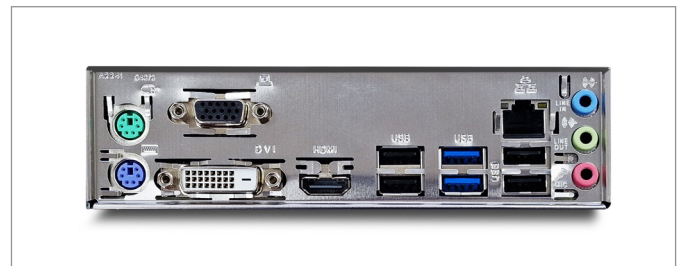
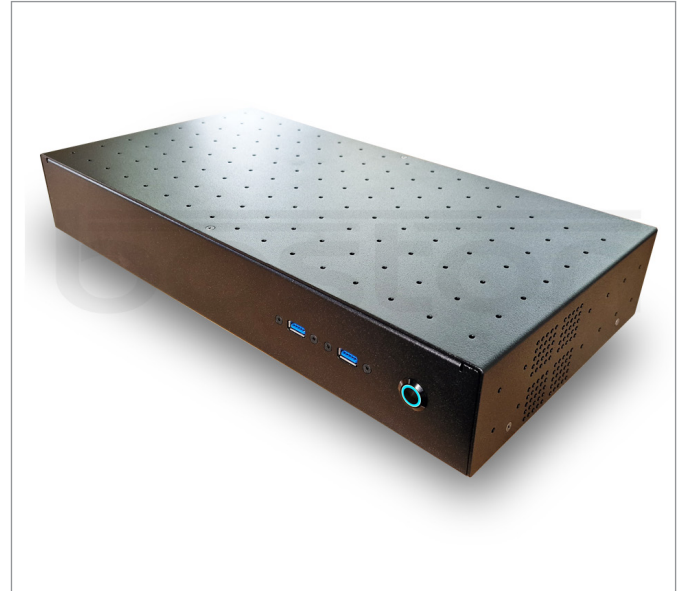
Product Codes BPC-091 / BPC-092

The Boston BPC-091 and BPC-092 are our new small form factor high specification PCs, specifically designed with robustness and simple installation in mind.

Compact and lightweight, the chassis is constructed from aluminium with fixing holes for panel, wall or under-desk mounting. Both units are network ready with a fast Gigabyte ethernet port enabling instant connection to the internet or other network resources. They come with DDR4 RAM and internal SSD storage for quick start-up and shut-down times.

In standard configuration, the BPC is supplied with the latest Windows 11 Operating System and our new SW900 iV test lane control software pre-installed, but can also be supplied unconfigured on request. Incorporating a sturdy perforated chassis for maximum heat dissipation, and with either a raw brushed aluminium or textured black finish, these units are well suited to industrial applications and demanding environments.

With a footprint of little over an A4 page, the new range of BPCs are ideal for use where space is a premium. Various configurations are available - please contact us. OEM enquiries welcome.



Product Features

- ✓ Innovative design with lightweight aluminium structure
- ✓ Panel / wall / under-desk mountable
- ✓ Low profile height of just 67mm
- ✓ Perforated casing for maximum cooling and airflow
- ✓ 8 x USB sockets for extra flexibility (6 rear + 2 front)
- ✓ 256GB SSD fast internal storage
- ✓ 8GB / 16GB fast DDR4 3200MHz RAM
- ✓ 3 x display output options
- ✓ Latest MS Windows 11 Operating System
- ✓ Pre-loaded with Boston test lane control software
- ✓ Ideal for industrial applications
- ✓ 2 year warranty
- ✓ Various specifications available
- ✓ OEM enquiries welcome

BPC

Technical Specifications

	BPC-091	BPC-092
Power Supply	230V / 60 Hz / 5A	230V / 60 Hz / 5A
CPU	Intel G6405 Comet Lake	Intel G6405 Comet Lake
Motherboard	Gigabyte H410M S2H V3	Gigabyte H610M H V1
Storage	256GB NVMe SSD	256GB NVMe SSD
Memory	8GB ELITE DDR4 RAM	16GB ELITE DDR4 RAM
Display Output	HDMI (4k) / DVI-D / VGA	HDMI (4k) / DVI-D / VGA
Ethernet	GbE LAN	GbE LAN
Operating System	MS Windows 11	MS Windows 11
Wifi / Bluetooth	Optional	Optional
Mouse / Keyboard	Optional	Optional

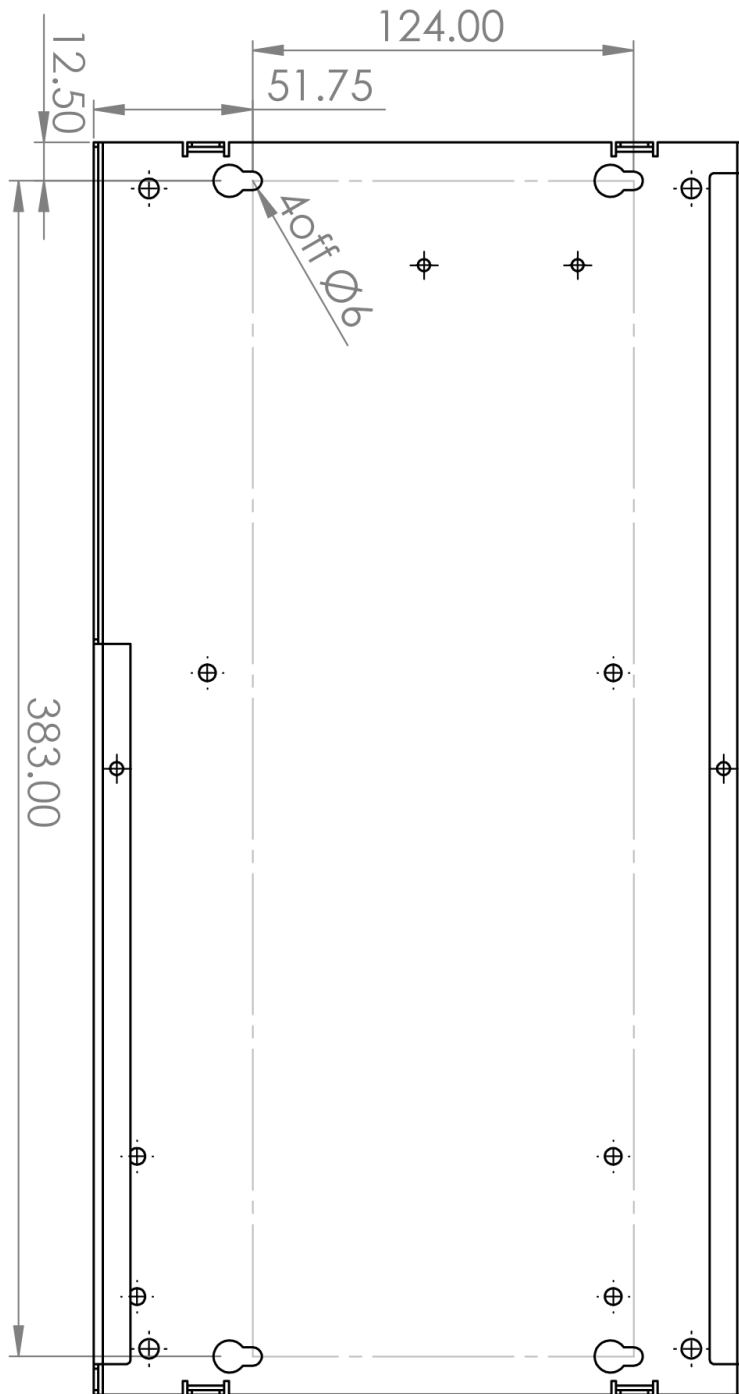
Chassis

	BPC-091	BPC-092
Weight	2.5kg	2.5kg
Length	408 mm	408 mm
Width	212 mm	212 mm
Height	67 mm	67 mm

BPC

Fixing Schematic

Note: All dimensions in mm



Boston makes every effort to ensure the accuracy of our product drawings and measurements. However, we reserve the right to correct any errors, inaccuracies or omissions and to change or update information at any time without prior notice.