

## 5.5T Two Post Vehicle Lift

### Product Code BHP255-S / BHP255-S2

With a large 5.5 tonne lifting capacity, our BHP255-S is ideal for workshops working mostly with four wheel drives and small to medium sized commercial vehicles. With a large 2.7m drive through width it provides ample working space. The S2 model also offers increased headroom for taller vehicles.

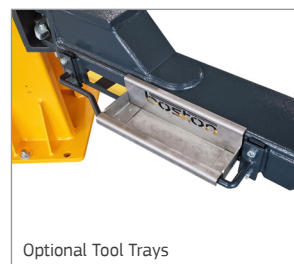
There is an overhead brace that connects the two posts providing rigid support. Heavy duty balance cables ensure perfect synchronisation between the carriages during lifting and lowering.

Also included is a convenient 230V power socket at the base of the control panel for connecting power tools or chargers.

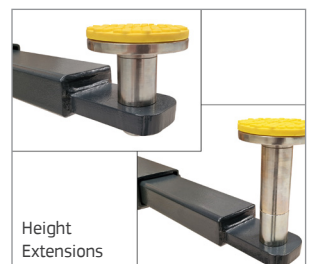
With its high specification European construction the BHP255 is a solid workhorse for busy workshops. Fully compliant with the latest machinery directive, safety features include locking positions at every 100mm, tapered arm locking mechanisms and dead-man controls.

Options available::

- Tool trays and a range of height extensions
- LED lighting kit
- Also available in neutral grey



Optional Tool Trays



Height Extensions

### Product Features

- ✓ Top brace security stop bar
- ✓ Symmetrical post arrangement for extra working space
- ✓ Low profile, three-stage lifting arms
- ✓ Arms can be used with quick drop-in height extensions
- ✓ Adjustable screw pads (min. height 110mm)
- ✓ Automatic arm locking mechanism
- ✓ Automatic hydraulic safety valve
- ✓ Final descent safety lowering buzzer
- ✓ Dead-man controls
- ✓ 2 year warranty

## 5.5T Two Post Vehicle Lift

### Technical Specifications

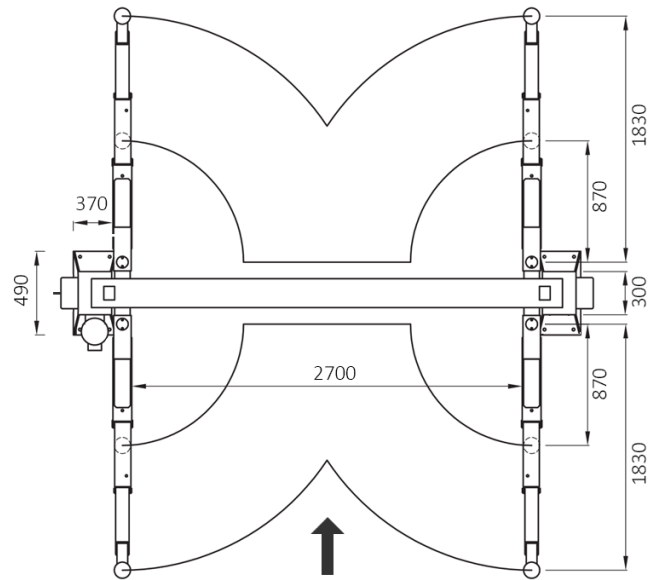
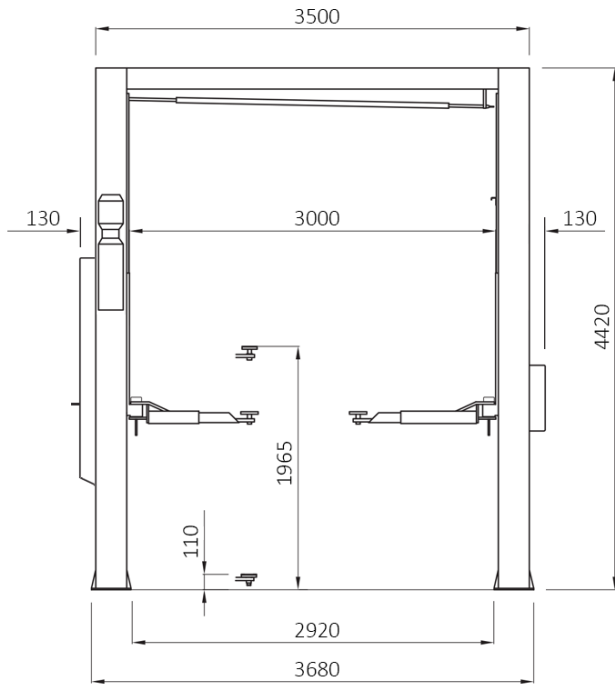
	BHP255-S / BHP255-S2
Load Capacity	5500 kg
Motor	2.2 kW
Power	3 Phase - 415V / 50Hz / 20A
Lifting / Lowering Time	60s (approx.)

### Measurements (millimetres)

	BHP255-S	BHP255-S2
Lifting Height	1965 mm	1965 mm
Installed Max Height	4420 mm	4920 mm
Installed Max Width (inc. panel covers)	3760 mm	3760 mm
Lifting Arm Extensions (min.)	870 mm	870 mm
Lifting Arm Extensions (max.)	1830 mm	1830 mm
Minimum Pad Height	110 mm	110 mm
Distance Between Columns	3000 mm	3000 mm
Distance Between Carriages	2700 mm	2700 mm
Fixing Plates	490 x 370 mm	490 x 370 mm

# 5.5T Two Post Vehicle Lift

## Schematic BHP255-S



## Schematic BHP255-S2

