

APPLICATION GUIDE 10

TERRACOTTA – SYNTHETIC METHOD

APPLICATION BY HAND

Hand or machine made low fired clay tiles.



The following is a synthetic cleaning and sealing guide for terracotta floor tiles. The products and methods specified should ensure that surfaces are suitably conditioned before sealing. Future cleaning and aftercare then made easier following the application of a impregnating sealer and finishing with a film forming liquid wax to protect the surface.

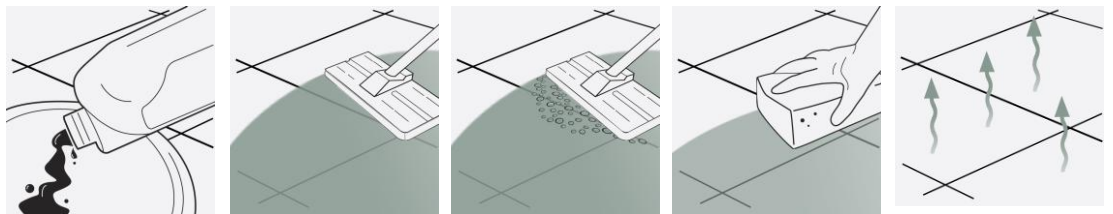
FOUR STEP INSTALLATION INSTRUCTION OVERVIEW (SEE PAGE TWO FOR REFURBISHING EXISTING) 2025

LTP GRIMEX

CONDITIONING & CLEANING THE SURFACE (before sealing & grouting)

LTP GRIMEX: Cleans and removes grease, dirt & grime.

1



STEP 1.
Dilute solution 1:5 with cool water and apply to the surface.

STEP 2.
Working in manageable areas at a time spread out the solution. Leave for 15 minutes.

STEP 3.
Agitate the surface to remove any dust and grime.

STEP 4.
Sponge up released residues. Rinse with water a second time and sponge again.

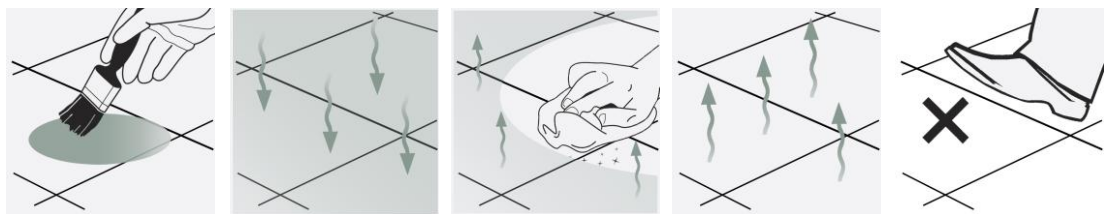
STEP 5.
Allow surfaces to dry before allowing traffic or sealing.

LTP MATTSTONE H20 or LTP COLOUR INTENSIFIER

PROTECT AGAINST STAINS - (apply before grouting)

LTP MATTSTONE H20 – Helps prevent staining from cement and grout residues.
LTP COLOUR INTENSIFIER – Colour Enhanced finished.

2



STEP 1.
Apply LTP Mattstone H20 or LTP Colour Intensifier until fully saturated.

STEP 2.
Allow sealer to absorb naturally. Repeat at two hourly intervals until the terracotta is fully saturated.

STEP 3.
45 minutes after applying the final coat of sealer, dry buff the surface using a microfibre cloth to remove any excess.

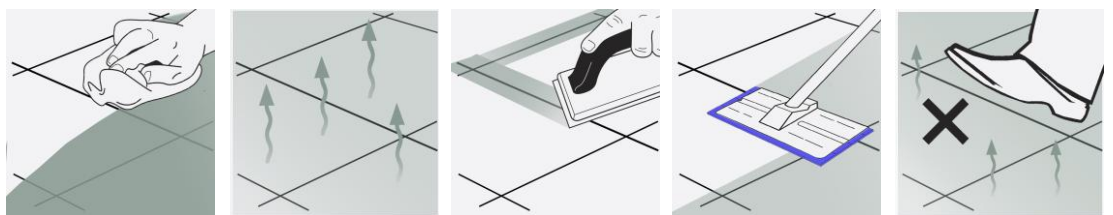
STEP 4.
Leave to dry naturally.

STEP 5.
Newly sealed surfaces should be left to dry for a minimum of 12 hours before allowing heavy traffic.

LTP IRONWAX GLOSS or LTP IRONWAX SATIN

PROTECT THE SURFACE AFTER SEALING - (apply before and after grouting)

LTP IRONWAX GLOSS OR SATIN – Help protect against water, oil, grease, dirt grime and aid maintenance.



STEP 1.
Apply sealer to the surface and spread out evenly. Two coats should be applied at hourly intervals.

STEP 2.
Leave to dry naturally. Do not rub or buff the surface.

STEP 3.
Leave to cure for 4 hours and then grout in the joints.

STEP 4.
Once residual grout has been removed with LTP Grout Stain Remover, after 12 hours, apply a further coat of Ironwax covering the joints as well.

STEP 5.
Newly sealed and finished surfaces should be left to dry for a minimum of 12 hours before allowing heavy traffic. Do not wash for 3 days.



For any LTP product information call our technical helpline
+ 44 (0) 1823 666213 | www.ltp-online.co.uk | technical@ltp-online.co.uk
Tone Est, Milverton Road, Wellington, Somerset, TA21 0AN



APPLICATION GUIDE 10

TERRACOTTA – SYNTHETIC METHOD

APPLICATION BY HAND

Hand or machine made low fired clay tiles.

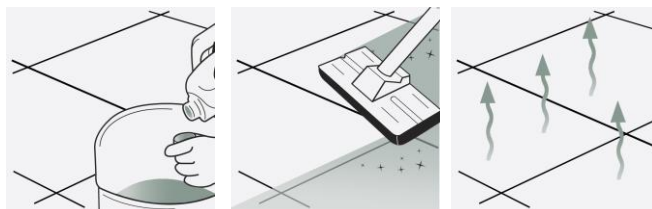


4

LTP FLOORSHINE



REGULAR AFTERCARE LTP FLOORSHINE – Maintains sealed natural tile surfaces.



- | | | |
|---|---|--|
| <p>STEP 1. Dilute 1 capful of cleaner per litre of warm water.</p> | <p>STEP 2. Mop surfaces with the solution. Do not rinse.</p> | <p>STEP 3. Allow to dry. Do not walk on surface during drying time. (20 minutes).</p> |
|---|---|--|

A one litre of LTP Floorshine will wash a 20m² floor approx 40 washes.

EQUIPMENT REQUIRED:

LTP Tools - 4pc pole, pad holder, sealant applicator, white emulsifying pad, deck brush, claw brush, buffing cloths, buckets, sponges, mops.

Ensure that any sensitive surfaces not to be cleaned are properly covered and protected before beginning. Ensure that gloves, eye protection and suitable water proof clothing are worn at all times.

1 CLEANING AND REFURBISHING – Used and heavily soiled surfaces

- Before sealing, the terracotta should be thoroughly cleaned. Old layers of sealer, residues from aftercare cleaners and deposits must be removed from the surface and the pores of the terracotta.
- Firstly, remove any old layers of wax with **LTP Solvex**. Apply the solution undiluted to the face of the tile and spread around evenly with a paint brush or soft cloth. Leave for 5-10 minutes and then rub with a cloth to remove the old layers of wax. Do not allow the solution to dry on the surface. Remove any residues with **LTP Grimex**.
- Agitate the surface using a white emulsifying pad, scrubbing brush or rotary scrubbing machine and leave for a further 5 minutes.
- Continue to scrub while adding clean water. Remove released residues using a sponge and water or extract using a wet vac.
- Rinse thoroughly with clean water to remove any remaining residues.
- Allow the surfaces to dry for a minimum of 24 hours before applying the protective sealer.
- For the removal of other types of dirt refer to the table below.

OTHER TYPES OF DIRT

| | |
|--|--------------------------------|
| Care product residues, oil, grease and dirt | LTP Grimex or Power Stripper |
| Wax and acrylic layers, tar, paint, bitumen residues | LTP Solvex and then LTP Grimex |
| Deeply engrained oil stains | LTP Grimex |
| Rust Stains | LTP Rust Stain Remover |



For any LTP product information call our technical helpline
 + 44 (0) 1823 666213 | www.ltp-online.co.uk | technical@ltp-online.co.uk
 Tone Est, Milverton Road, Wellington, Somerset, TA21 0AN



APPLICATION GUIDE 10

TERRACOTTA – SYNTHETIC METHOD

APPLICATION BY HAND

Hand or machine made low fired clay tiles.



2 PROTECTIVE SEAL TREATMENTS

- **LTP Ironwax Gloss or LTP Ironwax Satin** will render the surface water and oil repellent.
- Will help prevent staining, aids cleaning and simplifies the removal of surface stains.
- LTP Mattstone H20 will slightly deepen the colour.
- LTP Ironwax Gloss Or LTP Ironwax Satin will provide a transparent hard wearing gloss or satin sheen.
- There are no health concerns once the product has properly cured.
- For older surfaces that have no damp proof course use either LTP Mattstone H20 or LTP Colour Intensifier & Stainblock. They are micro porous and will allow the tiles to breathe.
- LTP Mattstone H20 or LTP Colour Intensifier & Stainblock are suitable for internal and external use. LTP Ironwax Satin or Gloss are for internal use only.
- If surfaces are properly maintained we recommend touching up the protective treatment every 3-4 years

NB. Always test the product on an inconspicuous area. Wet or non absorbent surfaces cannot be treated. LTP Mattstone H20 and LTP Colour Intensifier & Stainblock are impregnators which need to fully absorb. Do not allow them to dry on to the surface. Carefully buff with a soft cloth or machine to remove any excess. Remove unabsorbed impregnating sealer, if left to dry on the surface, by rubbing over with a little more sealer. Some tiles may be darker after application.

3 AFTERCARE



LTP Floorshine (for floors)

High quality every day after care cleaner floor wash that is suitable for interior and exterior use.

A highly effective aftercare cleaner for tiled surfaces. Cleans and protects in one application. Renovates dull looking floors. Regular use will also help to repair and reinforce protection on surfaces sealed with LTP Ironwax Satin or LTP Ironwax Gloss. Minor scratches, scuffs and blemishes are repaired after every wash.

NB. Always follow detailed instructions on the product labels. Avoid using steam cleaners, normal detergents or strong bleach cleaners on sealed surfaces as they will gradually remove the protective seal.

This information is offered without guarantee. The material should be used so as to take account of the local conditions and the surfaces to be treated. In case of doubt, the product should be tried out in an inconspicuous area



For any LTP product information call our technical helpline
 + 44 (0) 1823 666213 | www.ltp-online.co.uk | technical@ltp-online.co.uk
 Tone Est, Milverton Road, Wellington, Somerset, TA21 0AN

