

# Application Guide 5a NATURAL SLATE – IMPREGNATING SEALER

## APPLICATION BY HAND

Riven and honed finish



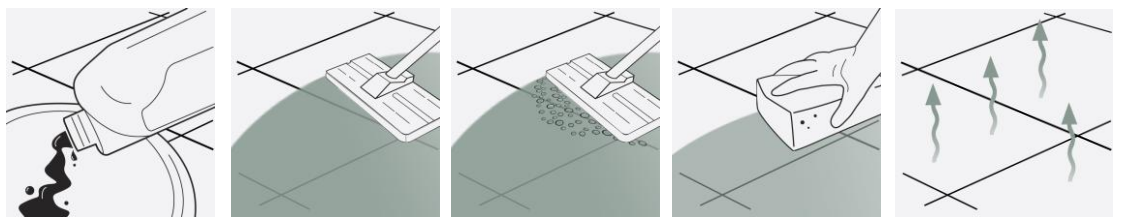
Natural slate has been used on floors and walls for centuries. As with all natural materials, it does require a certain level of care. This is a guide to help ensure that your slate surface remains protected and easy to maintain for many years.

### THREE STEP INSTALLATION INSTRUCTION OVERVIEW (SEE PAGE TWO FOR REFURBISHING EXISTING) 2025

#### LTP GRIMEX

#### INITIAL CLEANING OF NEWLY INSTALLED SURFACES

LTP GRIMEX – Cleans and conditions surfaces prior to sealing.



- STEP 1.** Dilute solution 1:10 with warm water.
- STEP 2.** Working in manageable areas at a time spread out the solution. Leave for 5-10 minutes
- STEP 3.** Add a little water and then scrub surfaces to release sediment dirt and grime. Use emulsifying pad and pad holder.
- STEP 4.** Sponge up released residues. Rinse with water a second time and sponge again.
- STEP 5.** Allow surfaces to dry before allowing traffic or sealing.

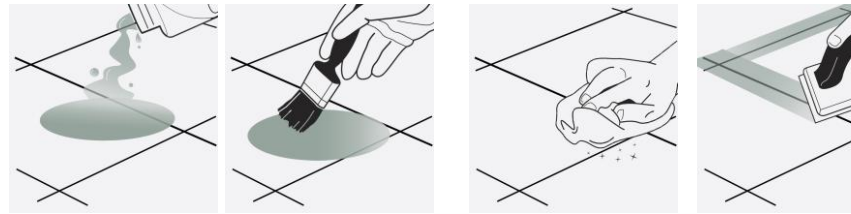
1



#### LTP MATTSTONE OR LTP MATTSTONE H2O OR

#### PROTECT AGAINST STAINS - (apply before and after grouting)

LTP Mattstone or LTP Mattstone H2O - natural finish- protects against water, oil, grime and aids maintenance.  
LTP Colour Intensifier & Stainblock - Enhanced natural finish  
For surface sealers see application guide no 5



- STEP 1.** Before grouting: Apply sealing solution to the surface. Surfaces must be clean and dry. Underfloor heating must be off.
- STEP 2.** Apply the product to the surface evenly using a soft cloth, brush or sealant applicator pad. Allowing 2 hours between coats.
- STEP 3.** Remove excess product and avoid pooling on the surface.
- STEP 4.** Once grouted, apply final coat, remove excess product.
- STEP 5.** Protect from water for 24 hours and do not wash surfaces for at least 3 days.

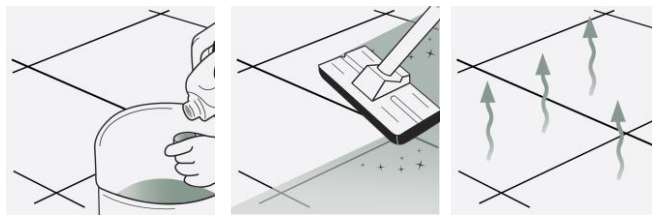


#### LTP COLOUR INTENSIFIER & STAINBLOCK

#### LTP WAXWASH

#### REGULAR AFTERCARE

LTP WAXWASH – Ph Neutral



- STEP 1.** Dilute 1 capful of cleaner per litre of warm water.
- STEP 2.** Mop surfaces with the solution. Do not rinse.
- STEP 3.** Allow to dry. Do not walk on surface during drying time. (20 minutes).

A 1ltr LTP Waxwash will wash a 20m<sup>2</sup> floor approx 40 times.

3



For any LTP product information call our technical helpline  
+ 44 (0) 1823 666213 | [www.ltp-online.co.uk](http://www.ltp-online.co.uk) | [technical@ltp-online.co.uk](mailto:technical@ltp-online.co.uk)  
Tone Est, Milverton Road, Wellington, Somerset, TA21 0AN



# Application Guide 5a

## NATURAL SLATE – IMPREGNATING SEALER

### APPLICATION BY HAND

Riven and honed finish



## EQUIPMENT REQUIRED:

LTP Tools - 4pc pole, pad holder, sealant applicator, white or black emulsifying pad, deck brush, claw brush, buffing cloths, buckets, sponges, mops.

Ensure that any sensitive surfaces not to be cleaned are properly covered and protected before beginning. Ensure that gloves, eye protection and suitable water proof clothing are worn at all times.

## 1 CLEANING AND REFURBISHING – used and heavily soiled surfaces

- Before sealing, the slate should be thoroughly cleaned. Old layers of sealer, residues from aftercare cleaners and deposits must be removed from the surface and the pores of the stone. Stubborn film forming layers of sealer can be removed with **LTP Solvex** before washing with **LTP Grimex**.
- Dilute **LTP Grimex** 1:3 with water and apply to the surface. This should be left for 5-30 minutes depending on the level of dirt.
- Agitate the surface using an emulsifying pad, scrubbing brush or rotary scrubbing machine.
- Continue to scrub while adding clean water. Remove released residues using a sponge and water or extract using a wet vac.
- Rinse thoroughly with clean water to remove any remaining residues.
- Surfaces should be thoroughly dry before sealing.
- For the removal of other types of dirt see the table below.

## OTHER TYPES OF DIRT

Cement and grout residue	LTP Grout Stain Remover
Tar, wax, paint, bitumen and epoxy grout residues	LTP Solvex
Deeply engrained oil stains	LTP Spot Stain Remover and LTP Fullers Earth
Rust stains	LTP Rust Stain Remover

## 2 PROTECTIVE SEAL TREATMENTS

- LTP Mattstone, LTP Mattstone H20 and LTP Colour Intensifier** will render the surface water and oil repellent these products will help prevent staining, aid cleaning and simplify the removal of stains.
- LTP Ironwax Satin and LTP Ironwax Gloss** provide a hard wearing surface sheen. (as an option see application guide 5)
- There are no health concerns once the product has properly cured.
- LTP Mattstone, LTP Mattstone H20, and LTP Colour Intensifier** are micro porous and so can be used on surfaces that have no damp proof course.
- LTP Mattstone and LTP Mattstone H20** are suitable for internal and external use. **LTP Ironwax Satin or LTP Ironwax Gloss** are for internal use only.
- If surfaces are properly maintained we recommend topping up the protective treatment every 3 – 4 years.

NB. Always test products on an inconspicuous area before general application. Surfaces that are non absorbent or saturated with moisture cannot be treated. **LTP Mattstone, LTP Mattstone H20 and LTP Colour Intensifier** are impregnating sealers that need to be fully absorbed. Any un-absorbed sealer should be buffed off with a micro-fibre cloth or machine with white pad to remove the excess. Some slates may be darker after application.

## 3 AFTERCARE



### LTP Floorshine

Cleans and protects in one application. Used routinely it will reinforce protection offered by **LTP Ironwax Satin and LTP Ironwax Gloss**.



### LTP Waxwash

**High quality, every day after care cleaner floor wash that is suitable for interior and exterior use.**

A gentle cleaner especially formulated to clean natural stone, slate, terracotta and quarry without damaging the grout, tile or protective treatments, leaving surfaces with a fresh clean fragrance. **1ltr of product will wash a 20m<sup>2</sup> surface approx 40 times.**

NB. Always follow detailed instructions on the product labels. Do not use abrasive materials to clean. Avoid using steam cleaners, normal detergents or strong bleach cleaners on sealed surfaces as they will gradually remove the protective seal.

*This information is offered without guarantee. The material should be used so as to take account of the local conditions and the surfaces to be treated. In case of doubt, the product should be tried out in an inconspicuous area*



For any LTP product information call our technical helpline  
 + 44 (0) 1823 666213 | [www.ltp-online.co.uk](http://www.ltp-online.co.uk) | [technical@ltp-online.co.uk](mailto:technical@ltp-online.co.uk)  
 Tone Est, Milverton Road, Wellington, Somerset, TA21 0AN

