

# APPLICATION GUIDE 9a

## TERRACOTTA – TRADITIONAL METHOD

### Easy aftercare option

#### APPLICATION BY HAND

Handmade or machine made low fired clay tiles.



The following is a traditional cleaning and sealing guide for terracotta floor tiles. The products and methods specified should ensure that surfaces are suitably conditioned before sealing. Future cleaning and aftercare then made easier following the application of a natural oil based sealer and finishing with a natural wax to protect the surface.

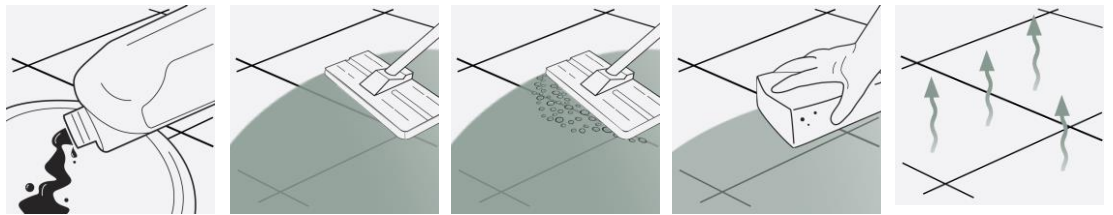
### FIVE STEP INSTALLATION INSTRUCTION OVERVIEW (SEE PAGE TWO FOR REFURBISHING EXISTING) NOV 2017

#### LTP GRIMEX

#### CONDITIONING & CLEANING THE SURFACE (before sealing & grouting)

LTP GRIMEX: Cleans and removes grease, dirt & grime.

1



- STEP 1.** Dilute sealer 1:5 with cool water and apply to the surface.
- STEP 2.** Working in manageable areas at a time spread out the solution. Leave for 15 minutes.
- STEP 3.** Agitate the surface to remove any dust and grime.
- STEP 4.** Sponge up released residues. Rinse with water a second time and sponge again.
- STEP 5.** Allow surfaces to dry before allowing traffic or sealing.

#### LTP BOILED LINSEED OIL

#### PROTECT AGAINST STAINS - (apply before grouting)

LTP BOILED LINSEED OIL – Traditional oil based impregnating sealer.

2



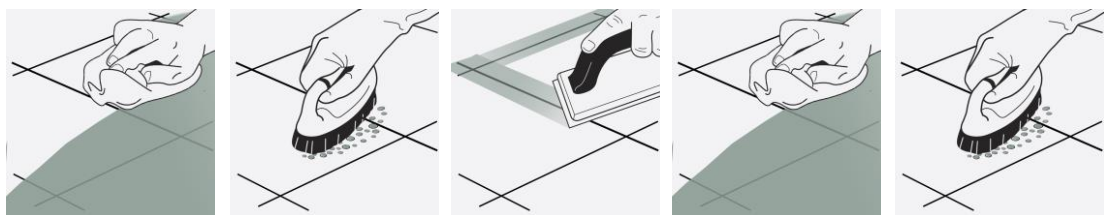
- STEP 1.** Apply sealer to the surface of the terracotta & spread out evenly using a brush.
- STEP 2.** Allow sealer to absorb naturally.
- STEP 3.** Apply further coats at 4 hour intervals until the terracotta is fully saturated.
- STEP 4.** 1 hour after applying the final coat of oil, dry buff the surface using an absorbent towel to remove any excess.
- STEP 5.** Newly sealed surfaces should be left to dry for a minimum of 12 hours before allowing heavy traffic or waxing.

#### LTP CLEAR OR LTP ANTIQUE WAX

#### PROTECT THE SURFACE AFTER SEALING - (apply before and after grouting)

LTP CLEAR WAX & LTP ANTIQUE WAX – Will help protect against water oil, grease, dirt, grime and aid maintenance.

3



- STEP 1.** Apply generously and work into the surface with a cloth.
- STEP 2.** Leave the wax for 20 minutes and then buff to a shine using a stiff scrubbing brush.
- STEP 3.** Leave wax to cure for 1 hour and then grout the joints.
- STEP 4.** Once residual grout has been removed with LTP Grout Stain Remover, after 12 hours apply a further coat of wax covering the joints as well.
- STEP 5.** Leave the wax for 20 minutes and then buff to a shine with a stiff brush. Allow light traffic for the first 12 hours and do not wash surfaces for 3 days.



For any LTP product information call our technical helpline +44 (0) 1823 666213 Visit our website [www.ltp-online.co.uk](http://www.ltp-online.co.uk)  
Tone Estate, Milverton Road, Wellington, Somerset, TA21 0AN. UK



# TERRACOTTA – TRADITIONAL METHOD

## Easy aftercare option

### APPLICATION BY HAND

Handmade or machine made low fired clay tiles.



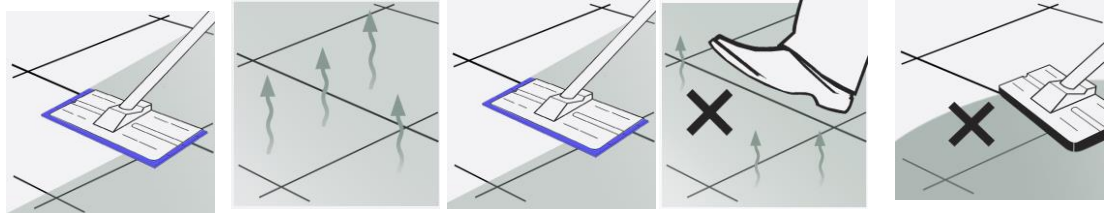
4

#### LTP IRONWAX SATIN OR LTP IRONWAX GLOSS



#### PROTECTING THE SURFACE AFTER WAXING – EASIER AFTERCARE OPTION

LTP IRONWAX GLOSS OR LTP IRONWAX SATIN – A low maintenance film forming liquid wax.



- STEP 1.** Apply sealer to the surface and spread out evenly covering the joints as well.
- STEP 2.** Leave to dry naturally. Do not rub or buff the surface.
- STEP 3.** Apply further thin coats at hourly intervals and leave to dry. Repeat until desired finish has been achieved (max 6 coats).
- STEP 4.** Newly sealed and finished surfaces should be left to dry for a minimum of 12 hours before allowing heavy traffic.
- STEP 5.** Do not wash for 3 days following treatment.

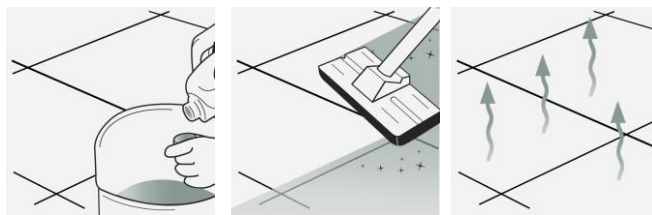
5

#### LTP FLOORSHINE



#### REGULAR AFTERCARE

LTP FLOORSHINE – Maintains sealed natural tile surfaces.



- STEP 1.** Dilute 1 capful of cleaner per litre of warm water.
- STEP 2.** Mop surfaces with the solution. Do not rinse.
- STEP 3.** Allow to dry. Do not walk on surface during drying time. (20 minutes).

A one litre of LTP Floorshine will wash a 20m<sup>2</sup> floor approx. 40 washes.  
Used routinely it will reinforce protection offered by LTP Ironwax Satin or LTP Ironwax Gloss

### EQUIPMENT REQUIRED:

LTP Tools - 4pc pole, pad holder, sealant applicator, white or black emulsifying pad, deck brush, claw brush, buffing cloths, buckets, sponges, mops.  
Ensure that any sensitive surfaces not to be cleaned are properly covered and protected before beginning. Ensure that gloves, eye protection and suitable water proof clothing are worn at all times.

### 1 CLEANING AND REFURBISHING – Used and heavily soiled surfaces

- Before sealing, the terracotta should be thoroughly cleaned. Old layers of sealer, residues from aftercare cleaners and deposits must be removed from the surface and the pores of the terracotta..
- Firstly, remove any old layers of wax with **LTP Solvex**. Apply the solution undiluted to the face of the tile and spread around evenly with a paint brush or soft cloth. Leave for 5-10 minutes and then rub with a cloth to remove the old layers of wax. Do not allow the solution to dry on the surface. Remove any residues with **LTP Grimex**.
- Agitate the surface using a white emulsifying pad, scrubbing brush or rotary scrubbing machine and leave for a further 5 minutes.
- Continue to scrub while adding clean water. Remove released residues using a sponge and water or extract using a wet vac.
- Rinse thoroughly with clean water to remove any remaining residues.
- Allow the surfaces to dry for a minimum of 24 hours before applying the protective sealer.
- For the removal of other types of dirt refer to the table below.



For any LTP product information call our technical helpline +44 (0) 1823 666213 Visit our website [www.ltp-online.co.uk](http://www.ltp-online.co.uk)  
Tone Estate, Milverton Road, Wellington, Somerset, TA21 0AN. UK



## APPLICATION GUIDE 9a

## TERRACOTTA – TRADITIONAL METHOD

## Easy aftercare option

## APPLICATION BY HAND

Handmade or machine made low fired clay tiles.



## OTHER TYPES OF DIRT

Care product residues, oil, grease and dirt	LTP Grimex or Power Stripper
Wax and acrylic layers, tar, paint, bitumen residues	LTP Solvex and then LTP Grimex
Deeply engrained oil stains	LTP Spot Stain Remover and LTP Fullers Earth
Rust Stains	LTP Rust Stain Remover

## 2 PROTECTIVE SEAL TREATMENTS

- **LTP BOILED LINSEED OIL and then LTP CLEAR or LTP ANTIQUE WAX** will render the surface water and oil repellent.
- Will help prevent staining, aids cleaning and simplifies the removal of surface stains.
- LTP Boiled Linseed Oil & Clear wax will deepen the colour and alter the surface character.
- There are no health concerns once the product has properly cured.
- For older surfaces that have no damp proof course use either LTP Mattstone Or LTP Colour Intensifier & Stainblock. They are micro porous and will allow the tiles to breathe.
- LTP Mattstone or LTP Colour Intensifier & Stainblock are suitable for internal and external use. LTP Clear or Antique Wax are for internal use only.
- If surfaces are properly maintained we recommend touching up the protective treatment every 3-4 years

NB. Always test the product on an inconspicuous area. Wet or non absorbent surfaces cannot be treated. LTP Boiled Linseed Oil, LTP Mattstone and LTP Colour Intensifier & Stainblock are impregnators which need to fully absorb. Do not allow them to dry on to the surface. Carefully buff with a soft cloth or machine to remove any excess. Remove unabsorbed impregnating sealer, if left to dry on the surface, by rubbing over with a little more sealer. Some tiles may be darker after application. Over applied boiled linseed oil that is difficult to remove should be rubbed over with a little white spirit. This should be done while it is still soft on the surface. If LTP Boiled Linseed has dried to form a patchy lacquer remove with LTP Solvex.

## 3 AFTERCARE

**LTP Floorshine (for floors)**

**High quality every day after care cleaner floor wash that is suitable for interior and exterior use.**

A highly effective aftercare cleaner for tiled surfaces. Cleans and protects in one application. Renovates dull looking floors. Regular use will also help to repair and reinforce protection on surfaces sealed with LTP Ironwax Satin or Gloss. Minor scratches, scuffs and blemishes are repaired after every wash

**1 ltr of product will wash a 20 m<sup>2</sup> surface approx 40 times.**

NB. Always follow detailed instructions on the product labels. Avoid using steam cleaners, normal detergents or strong bleach cleaners on sealed surfaces as they will gradually remove the protective seal.

*This information is offered without guarantee. The material should be used so as to take account of the local conditions and the surfaces to be treated. In case of doubt, the product should be tried out in an inconspicuous area*



For any LTP product information call our technical helpline  
+44 (0) 1823 666213 Visit our website [www.ltp-online.co.uk](http://www.ltp-online.co.uk)  
Tone Estate, Milverton Road, Wellington, Somerset, TA21 0AN. UK

