

# APPLICATION GUIDE 11

## QUARRY TILES, VICTORIAN & MINTON FLOORS

APPLICATION BY HAND  
HIGHLY VITRIFIED CLAY TILES



Quarry tiles have been used on floors and walls for centuries. As with all natural materials, it does require a certain level of care. This is a guide to help ensure that treated surfaces remain protected and easy to maintain for many years.

**Note: Ensure that surfaces are sealed before grouting.**

### THREE STEP INSTALLATION INSTRUCTION OVERVIEW (SEE PAGE TWO FOR REFURBISHING EXISTING) MARCH 2022

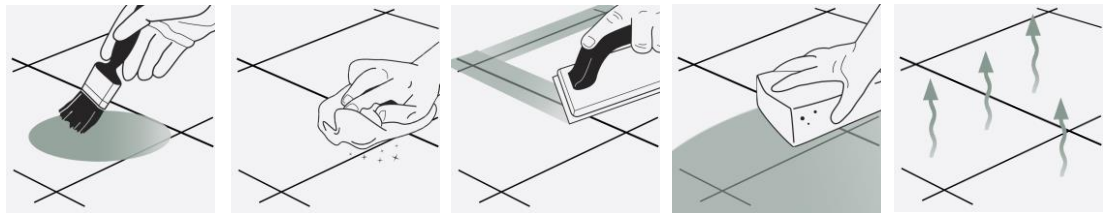
1

**LTP GROUT STAIN REMOVER OR LTP COLOUR INTENSIFIER & STAINBLOCK**



#### INITIAL SEAL AND CLEANING OF NEWLY INSTALLED SURFACES

**LTP COLOUR INTENSIFIER & STAINBLOCK:** Helps prevent staining from grout and cement residues.  
**LTP GROUT STAIN REMOVER:** Cleans and removes dried on cement and grout residue.



- STEP 1.** Surfaces must be dry. Under floor heating should be off. Apply sealer to the surface.
- STEP 2.** Within 30 minutes work excess sealer off the surface.
- STEP 3.** Grout joints after 2 hours
- STEP 4.** If necessary remove any dried on grout residues with LTP Grout Stain Remover.
- STEP 5.** Allow surfaces to dry. (24hours)

2

**LTP GLAZE PROTECTOR OR LTP COLOUR INTENSIFIER & STAINBLOCK**



#### PROTECT AGAINST STAINS

**LTP GLAZE PROTECTOR:** Satin finish – protects against water, oil grease and aids maintenance.  
**LTP COLOUR INTENSIFIER & STAIN BLOCK:** Enhanced natural appearance - protects against water, oil, dirt and grime.



- STEP 1.** Apply several thin coats of LTP Glaze Protector using a soft cloth or applicator. Allow 30 minutes between coats.
- STEP 2.** Leave to dry. Do not buff. Light traffic for 24 hours.
- STEP 3.** Alternatively apply a further coat of LTP Colour Intensifier.
- STEP 4.** Within 30 minutes work excess sealer off the surface.
- STEP 5.** Protect from water for 24 hours and do not wash surfaces for at least 3 days.

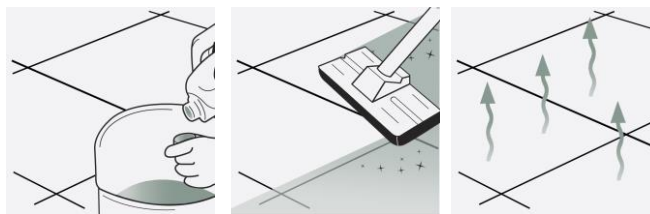
3

**LTP WAXWASH OR LTP FLOORSHINE.**



#### REGULAR AFTERCARE

**LTP WAXWASH:** Maintains surfaces sealed with LTP Colour Intensifier & Stainblock.  
**LTP FLOORSHINE:** Maintains surfaces sealed with LTP Glaze Protector.



- STEP 1.** Dilute 1 capful of cleaner per litre of warm water.
- STEP 2.** Mop surfaces with the solution. Do not rinse.
- STEP 3.** Allow to dry. Do not walk on surface during drying time. (20 minutes).

A 1ltr of cleaner will wash a 20m<sup>2</sup> floor approx 40 times



For any LTP product information call our technical helpline  
+ 44 (0) 1823 666213 | [www.ltp-online.co.uk](http://www.ltp-online.co.uk) | [technical@ltp-online.co.uk](mailto:technical@ltp-online.co.uk)  
Tone Est, Milverton Road, Wellington, Somerset, TA21 0AN



# QUARRY TILES, VICTORIAN & MINTON FLOORS

APPLICATION BY HAND  
HIGHLY VITRIFIED CLAY TILES



## EQUIPMENT REQUIRED:

LTP Tools - 4pc pole, pad holder, sealant applicator, white emulsifying pad, deck brush, claw brush, buffing cloths, buckets, sponges, mops.  
Ensure that any sensitive surfaces not to be cleaned are properly covered and protected before beginning. Ensure that gloves, eye protection and suitable water proof clothing are worn at all times.

## 1 CLEANING AND REFURBISHING – used and heavily soiled surfaces

- Before sealing surfaces should be thoroughly cleaned. Old layers of sealer, residues from aftercare cleaners and deposits must be removed from the surface and the pores of the tiles. Any film forming layers of sealer can be removed with **LTP Solvex** before washing with **LTP Grimex**.
- Dilute **LTP Grimex** 1:3 with water, apply to the surface and leave to sit on the surface of the tiles for as long as it takes for the dirt to release. 5-30 minutes depending upon the level of dirt.
- Agitate the surface using a black emulsifying pad, scrubbing brush or rotary scrubbing machine and leave for a further 5 minutes.
- Continue to scrub while adding clean water. Remove residues using a sponge and water or extract using a wet vac.
- Rinse thoroughly with clean water to remove any remaining residues.
- Surfaces should be thoroughly dry before sealing.
- For the removal of other types of dirt see the table below.
- If you are unsure please call our helpline for advise

## OTHER TYPES OF DIRT

Care product residues, oil grease and dirt	LTP Grimex or Power Stripper
Wax and acrylic layers, tar, paint and bitumen residues	LTP Solvex and then LTP Grimex
Deeply engrained oil stains	LTP Grimex
Rust stain	LTP Rust Stain Remover

## 2 PROTECTIVE SEAL TREATMENTS

- **LTP Colour Intensifier & Stainblock** or **LTP Glaze Protector** will render the surface water and oil repellent.
- These products will help prevent staining, aid cleaning and simplify the removal of surface stains.
- **LTP Colour Intensifier & Stainblock** will provide a barrier of protection with an enhanced matt finish.
- **LTP Glaze Protector** provides a hard wearing satin sheen.
- There are no health concerns once the product has properly cured.
- **LTP Colour Intensifier & Stainblock** sealer is micro porous and so can be used on surfaces that have no damp proof course.
- **LTP Colour Intensifier & Stainblock** is suitable for internal and external use. **LTP Glaze Protector** is for internal use only.
- If surfaces are properly maintained, we would suggest topping up the protective treatment every 3 – 4 years.

NB. Always test products on an inconspicuous area before general application. Surfaces that are non absorbent or saturated with moisture cannot be treated. **LTP Colour Intensifier & Stainblock** is an impregnating sealer that needs to fully absorb. Any un-absorbed sealer should be buffed off with a micro-fibre cloth or machine with white pad to remove the excess. Some surfaces may be darker after application. **LTP Glaze Protector** is film forming and leaves a sheen on drying. Do not rub or buff.

## 3 AFTERCARE



### LTP WAXWASH

Ideal for washing floors sealed with LTP Colour Intensifier. Use routinely in place of normal detergent  
**1ltr of product will wash a 20m<sup>2</sup> surface approx 40 times.**



### LTP FLOORSHINE

Cleans & protects in one. Used routinely, it will reinforce protection offered by LTP Glaze Protector.  
**1ltr of product will wash a 20m<sup>2</sup> surface approx 40 times.**

NB. Always follow detailed instructions on the product labels. Protect acid sensitive surfaces from contact with acidic substances.. Avoid using steam cleaners, normal detergents or strong bleach cleaners on sealed surfaces as they will gradually remove the protective seal.

*This information is offered without guarantee. The material should be used so as to take account of the local conditions and the surfaces to be treated. In case of doubt, the product should be tried out in an inconspicuous area*



For any LTP product information call our technical helpline  
+ 44 (0) 1823 666213 | [www.ltp-online.co.uk](http://www.ltp-online.co.uk) | [technical@ltp-online.co.uk](mailto:technical@ltp-online.co.uk)  
Tone Est, Milverton Road, Wellington, Somerset, TA21 0AN

