

APPLICATION GUIDE 12

GLAZED CERAMIC AND GLAZED PORCELAIN TILES



Glazed tiles have a completely closed surface that is normally hard wearing and easy to maintain. Sealing is not normally required, however on some tiles it is possible to enhance their appearance and make them even easier to maintain.

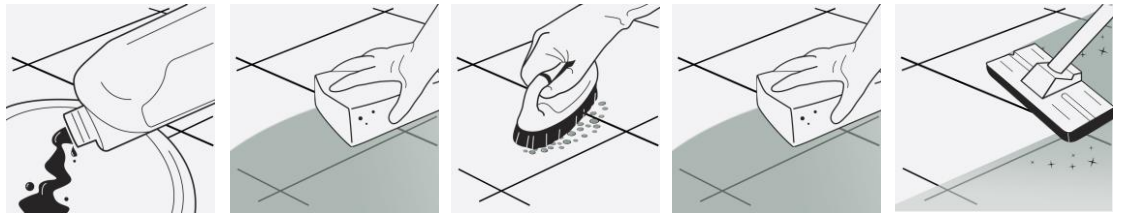
THREE STEP INSTALLATION INSTRUCTION OVERVIEW (SEE PAGE TWO FOR REFURBISHING EXISTING) 2025

LTP GROUT STAIN REMOVER

INITIAL CLEANING OF NEWLY INSTALLED SURFACES

LTP GROUT STAIN REMOVER – Cleans & removes cement & grout residues (not to be used on acid sensitive surfaces such as limestone and marble)

1



STEP 1.
Dilute LTP Grout Stain Remover 1:4 with cool water.

STEP 2.
Apply liberally and spread over surface of the tiles.

STEP 3.
If necessary, agitate with a scrubbing brush or rotary scrubbing machine and leave to react for 10-15 mins.

STEP 4.
Keeping wet with additional LTP Grout Stain Remover solution.

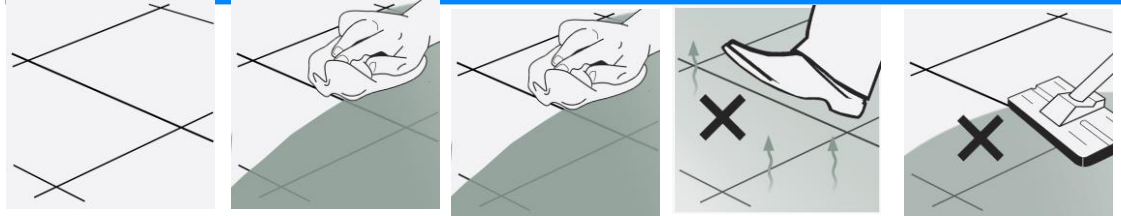
STEP 5.
Mop up and rinse thoroughly with clean water several times and allow surfaces to dry. (24 hours)

LTP GLAZE PROTECTOR

ENHANCE APPEARANCE AND EASE MAINTENANCE

LTP GLAZE PROTECTOR – Satin finish-the just washed look-protects against dirt, grime, aids maintenance. (Not wet rooms of shower enclosures)

2



STEP 1.
Surfaces must be clean and dry. Underfloor heating must be off.

STEP 2.
Apply the product to the surface evenly using a J cloth or sealant applicator.

STEP 3.
Further coats can be applied, to achieve a glossier finish (max.6) at right angles to the first. 1 hour between coats.

STEP 4.
Allow to dry, do not walk on the surface for at least 1 hour.

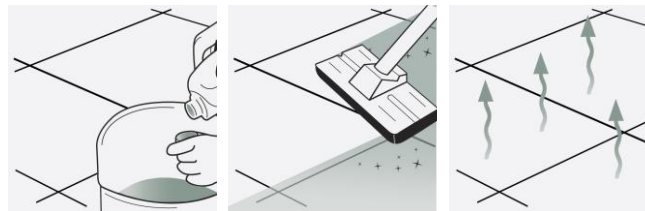
STEP 5
Protect from water for 24 hours and do not wash for at least 3 days.

LTP FLOORSHINE

REGULAR AFTERCARE

LTP FLOORSHINE: A mild detergent that will clean without removing the seal

3



STEP 1.
Dilute 1 capful of cleaner per litre of warm water.

STEP 2.
Mop surfaces with the solution. Do not rinse.

STEP 3.
Allow to dry. Do not walk on surface during drying time. (20 minutes).

A 1ltr of cleaner will wash a 20m² floor approx 40 times.



For any LTP product information call our technical helpline
 + 44 (0) 1823 666213 | www.ltp-online.co.uk | technical@ltp-online.co.uk
 Tone Est, Milverton Road, Wellington, Somerset, TA21 0AN



APPLICATION GUIDE 12

GLAZED CERAMIC AND GLAZED PORCELAIN TILES



EQUIPMENT REQUIRED:

LTP Tools – Paint brush, scrubbing brush, deck brush, claw brush, J cloth, sealant applicator & pad, buffing cloths, buckets, sponges, mops.

Ensure that any sensitive surfaces not to be cleaned are properly covered and protected before beginning. Ensure that gloves, eye protection are worn at all times.

1 CLEANING AND REFURBISHING – used and heavily soiled surfaces

- Before sealing the grout joints and surface of the tiles should be thoroughly cleaned. Old layers of sealer, residues from aftercare cleaners and deposits must be removed.
- Depending on the levels of dirt, dilute LTP Grimex 1 : 3 with water and apply to the surface using a sponge and leave to sit on the surface of the tiles and grout for 5 – 10 minutes.
- Agitate the joints and the surface of the tiles using a white emulsifying pad or stiff scrubbing brush. Use a grout brush on the joints.
- Continue to scrub while adding clean water. Remove released residues using a sponge and water.
- Rinse thoroughly with clean water to remove any remaining residues.
- Allow the surface to dry for a minimum of 12 hours before applying the protective seal.
- LTP Glaze Protector will help aid cleaning on more textured surfaces and simplify the removal of spillages.
- For the removal of other types of dirt see the table below.

OTHER TYPES OF DIRT

Care product residues, oil, grease and dirt.	LTP Grimex or LTP Powerstripper
Mould & mildew.	LTP Mouldex
Rust stains.	LTP Rust Stain Remover

2 MAINTENANCE IN KITCHENS AND BATHROOMS

- **LTP Multipurpose Cleaner** used routinely will degrease and descale glazed ceramic and porcelain at the same time.
- **LTP Mouldex** will remove mould and mildew on cement and silicone grout joints. Simply spray on the affected area and allow to work for approximately 20 minutes before agitating and rinsing.
- There are no health concerns once the product has properly cured.
- Both are micro porous and allow microscopic transition of moisture, so can be used 20-30 minutes after grouting and dusting off.
- Cleaned appropriately using **LTP Floorshine** we would suggest topping up the protective treatment every 3 – 4 years.

NB. Always test products on an inconspicuous area before general application. LTP Glaze Protector should not be used in wet areas such as shower enclosures.

3 AFTERCARE

**LTP Floorshine**

Cleans and protects in one application. Used routinely it will reinforce protection offered by LTP Glaze Protector.

1 ltr of product will wash a 20m² surface approx 40 times.

**LTP Multipurpose Cleaner**

Cleans and protects surfaces from limescale. Ideal for use in kitchens and bathrooms.

**LTP Mouldex**

Effectively removes mould, dirt and grime from grouting and silicone.

NB. Always follow detailed instructions on the product labels. Avoid using steam cleaners, normal detergents or strong bleach cleaners on sealed surfaces as they will gradually remove the protective seal.

This information is offered without guarantee. The material should be used so as to take account of the local conditions and the surfaces to be treated. In case of doubt, the product should be tried out in an inconspicuous area.



For any LTP product information call our technical helpline
 + 44 (0) 1823 666213 | www.ltp-online.co.uk | technical@ltp-online.co.uk
 Tone Est, Milverton Road, Wellington, Somerset, TA21 0AN

