

APPLICATION GUIDE 13 FULL BODIED UNGLAZED PORCELAIN & VITRIFIED QUARRY TILES

APPLICATION BY HAND
HIGHLY VITRIFIED CLAY TILES



Vitrified quarry tiles and full bodied porcelain tiles are extremely hard wearing and easy to maintain. It is possible to make them more stain resistant and if required enhance their appearance and make them easier to maintain. This is a guide to help ensure that treated surfaces remain protected and easy to maintain for many years.

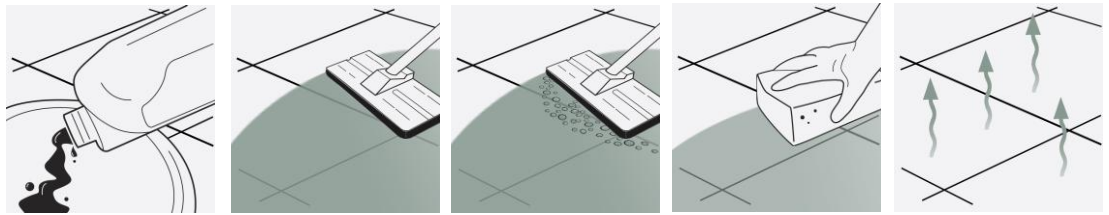
THREE STEP INSTALLATION INSTRUCTION OVERVIEW (SEE PAGE TWO FOR REFURBISHING EXISTING) 2025

LTP GRIMEX

INITIAL CLEANING OF NEWLY INSTALLED SURFACES

LTP GRIMEX – Cleans and conditions surfaces prior to sealing.

1



STEP 1.
Dilute solution 1:0 with warm water and apply to surface.

STEP 2.
Working in manageable areas at a time spread out the solution. Leave for 5-10 minutes.

STEP 3.
Add a little water and then scrub surfaces to release sediment dirt and grime. Use emulsifying pad and pad holder.

STEP 4.
Sponge up released residues. Rinse with water a second time and sponge again.

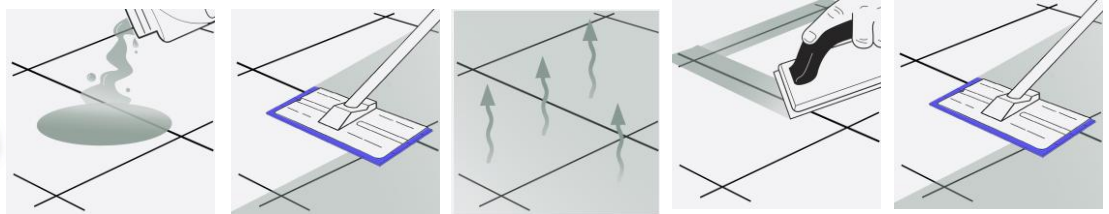
STEP 5.
Allow surfaces to dry before allowing traffic or sealing.

LTP MATTSTONE H20, LTP MATTSTONE, LTP GLAZE PROTECTOR

PROTECT AGAINST STAINS - (apply before and after grouting)

LTP Mattstone H20 Or LTP Mattstone – Natural finish sealer, Protects against water, oil and grime.
LTP Glaze Protector - Enhancing the appearance – just washed look (internal surfaces only)

2



STEP 1.
Before grouting, apply a small amount of sealing solution to the surface.

STEP 2.
Spread out evenly using a sealant applicator pad and pad holder. Follow instructions on label.

STEP 3.
Allow sealer to absorb and dry. Wipe away any excess and leave to dry.

STEP 4.
Leave sealer to cure overnight before grouting the joints. Clean off grout residues with LTP Grout Stain Remover if necessary and leave to dry.

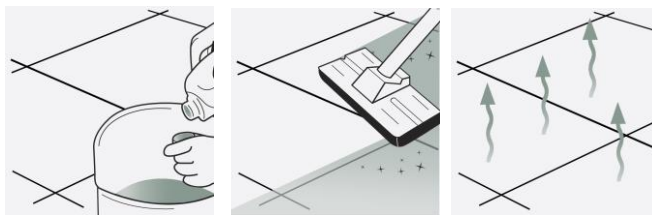
STEP 5.
Once fully dry apply a final coat of sealer covering the joints. Leave to dry. These products will take a further 3 days to become fully resistant. Do not wash surfaces for at least 3 days.

LTP WAXWASH or LTP FLOORSHINE

REGULAR AFTERCARE

LTP Waxwash - Maintains surfaces sealed with LTP Mattstone H20 or LTP Mattstone- Ph Neutral
LTP Floorshine – Maintains surfaces sealed with LTP Glaze Protector

3



STEP 1.
Dilute 1 capful of cleaner per litre of warm water.

STEP 2.
Mop surfaces with the solution. Do not rinse.

STEP 3.
Allow to dry. Do not walk on surface during drying time. (20 minutes).

A 1ltr of cleaner will wash a 20m² floor approx 40 times



For any LTP product information call our technical helpline
+ 44 (0) 1823 666213 | www.ltp-online.co.uk | technical@ltp-online.co.uk
Tone Est, Milverton Road, Wellington, Somerset, TA21 0AN



APPLICATION GUIDE 13

FULL BODIED UNGLAZED PORCELAIN & VITRIFIED QUARRY TILES

APPLICATION BY HAND
HIGHLY VITRIFIED CLAY TILES



EQUIPMENT REQUIRED:

LTP Tools - 4pc pole, pad holder, sealant applicator, white emulsifying pad, deck brush, claw brush, buffing cloths, buckets, sponges, mops.

Ensure that any sensitive surfaces not to be cleaned are properly covered and protected before beginning. Ensure that gloves, eye protection and suitable water proof clothing are worn at all times.

1 CLEANING AND REFURBISHING – used and heavily soiled surfaces

- Before sealing surfaces should be thoroughly cleaned. Old layers of sealer, residues from aftercare cleaners and deposits must be removed from the surface and the pores of the stone. Stubborn film forming layers of sealer can be removed with **LTP Solvex** before washing with **LTP Grimex**.
- To help remove years of ground in dirt and grime dilute **LTP Grimex** 1:3 with water and apply to the surface. This should be left for 5-10 minutes.
- Agitate the surface using a black pad, scrubbing brush or rotary scrubbing machine and leave for a further 5 minutes.
- Continue to scrub while adding clean water. Remove released residues using a sponge and water or extract using a wet vac.
- Rinse thoroughly with clean water to remove any remaining residues.
- Surfaces should be thoroughly dry before sealing.
- For the removal of other types of dirt see the table below.

OTHER TYPES OF DIRT

Care product residues, oil grease and dirt

LTP Grimex Or Power Stripper

Wax and acrylic layers, tar, paint and bitumen residues

LTP Solvex

Grout & Cement residues

LTP Grout Stain Remover

Rust stains

LTP Rust Stain Remover

2 PROTECTIVE SEAL TREATMENTS

- LTP Mattstone, LTP Mattstone H20 & LTP Glaze Protector** will render the surface water and oil repellent.
- These products will help prevent staining, aid cleaning and simplify the removal of stains. Used as a pre sealer it assists with grout release.
- LTP Mattstone & LTP Mattstone H20** provide an invisible barrier of protection that will not greatly alter the surface character.
- There are no health concerns once the product has properly cured.
- LTP Mattstone & Mattstone H20** are breathable so can be used on surfaces that are still slightly damp or have no damp proof course.
- LTP Glaze Protector** is a film forming sealer and does not breathe. It gives a just washed appearance. **Should not be used in Wet areas like shower enclosures**
- Cleaned appropriately using **LTP Waxwash** or **LTP Floorshine** we would suggest topping up the protective treatment every 3 – 4 years.

NB. Always test products on an inconspicuous area before general application. Surfaces that are non absorbent or saturated with moisture cannot be treated. Any un-absorbed sealer should be buffed off with a micro-fibre cloth or machine with white pad to remove the excess. Some surfaces may be darker after application.

3 AFTERCARE



LTP Waxwash (for floors)
Formulated for use on unglazed tiles. Ideal for washing floors sealed with LTP Mattstone H20 or Mattstone. Use routinely in place of normal detergent.



LTP Floorshine (for floors)
Cleans and protects in one application. Used routinely it will reinforce protection offered by LTP Glaze Protector

NB. Always follow detailed instructions on the product labels. Protect acid sensitive surfaces from contact with acidic substances. Avoid using steam cleaners, normal detergents or strong bleach cleaners on sealed surfaces as they will gradually remove the protective seal.

This information is offered without guarantee. The material should be used so as to take account of the local conditions and the surfaces to be treated. In case of doubt, the product should be tried out in an inconspicuous area



For any LTP product information call our technical helpline
+ 44 (0) 1823 666213 | www.ltp-online.co.uk | technical@ltp-online.co.uk
Tone Est, Milverton Road, Wellington, Somerset, TA21 0AN

