

## APPLICATION GUIDE 14

## ENCAUSTIC FLOOR TILES

APPLICATION BY HAND

UNGLAZED COLOURED OR PATTERNED CLAY TILES



Encaustic tiles have been used on floors and walls for centuries. As with all natural materials, they do require a certain level of care. This is a guide to help ensure that your encaustic tile surface remains protected and easy to maintain for many years.

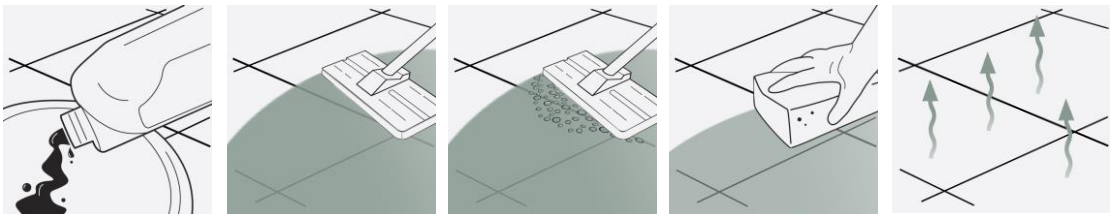
**NOTE: Ensure that surfaces are sealed before grouting**

## THREE STEP INSTALLATION INSTRUCTION OVERVIEW (SEE PAGE TWO FOR REFURBISHING EXISTING) March 2022

## LTP GRIMEX

## INITIAL CLEANING OF NEWLY INSTALLED SURFACES IF REQUIRED

LTP GRIMEX: – Cleans and conditions surfaces before sealing.



**STEP 1.**  
Dilute solution 1:10 with warm water and apply to the surface.

**STEP 2.**  
Working in manageable areas at a time spread out the solution. Leave for 5-10 minutes.

**STEP 3.**  
Add a little water and then scrub surfaces and grout joints to release sediment dirt and grime. Use black pad and pad holder.

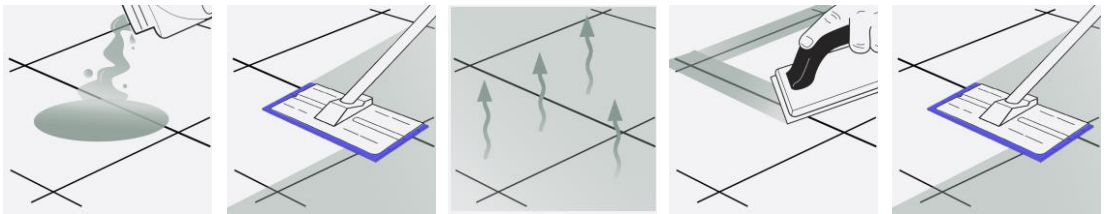
**STEP 4.**  
Sponge up released residues. Rinse with water a second time and sponge again.

**STEP 5.**  
Allow surfaces to dry before allowing traffic or sealing.



1

## LTP COLOUR INTENSIFIER &amp; STAINBLOCK or

PROTECT AGAINST STAINS - (apply before and after grouting)  
LTP MATTSTONE H2O or LTP MATTSTONE - protects against water, oil and grime  
Or LTP COLOUR INTENSIFIER & STAINBLOCK - protects and enhances/natural finish

**STEP 1.**  
Before grouting: Apply sealing solution to the surface. Underfloor heating must be off.

**STEP 2.**  
Spread out evenly using a sealant applicator pad and pad holder.

**STEP 3.**  
Allow sealer to absorb and dry. Apply further coats at 2 hour intervals until it will absorb no more. Wipe away excess and leave to dry.

**STEP 4.**  
Leave sealer to cure overnight before grouting the joints. Clean off grout residues and leave to dry.

**STEP 5.**  
Once fully dry apply a final coat of sealer covering the joints as well. Leave to dry. Buff off any visible residues using a soft cloth to finish.



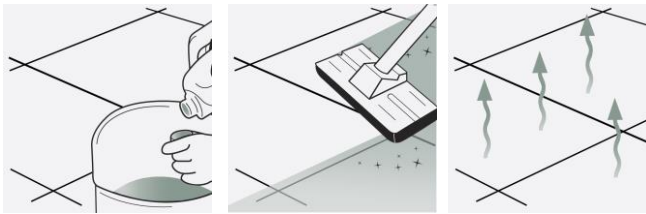
LTP MATTSTONE H2O,  
LTP MATTSTONE

2

## LTP WAXWASH

## REGULAR AFTERCARE

LTP WAXWASH – Maintains sealed natural tile surfaces. Ph Neutral



**STEP 1.**  
Dilute 1 capful of cleaner per litre of warm water.

**STEP 2.**  
Mop surfaces with the solution. Do not rinse.

**STEP 3.**  
Allow to dry. Do not walk on surface during drying time. (20 minutes).

A 1ltr of cleaner will wash a 20m<sup>2</sup> floor approx 40 times.



3



For any LTP product information call our technical helpline  
+ 44 (0) 1823 666213 | [www.ltp-online.co.uk](http://www.ltp-online.co.uk) | [technical@ltp-online.co.uk](mailto:technical@ltp-online.co.uk)  
Tone Est, Milverton Road, Wellington, Somerset, TA21 0AN



# APPLICATION GUIDE 14

## ENCAUSTIC FLOOR TILES

### APPLICATION BY HAND

#### UNGLAZED COLOURED OR PATTERNED CLAY TILES



### EQUIPMENT REQUIRED:

LTP Tools - 4pc pole, pad holder, sealant applicator, white emulsifying pad, deck brush, claw brush, buffing cloths, buckets, sponges, mops.  
Ensure that any sensitive surfaces not to be cleaned are properly covered and protected before beginning. Ensure that gloves, eye protection and suitable clothing are worn at all times.

## 1 CLEANING AND REFURBISHING – used and heavily soiled surfaces

- Before sealing the surface should be thoroughly cleaned. Old layers of sealer, residues from aftercare cleaners and deposits must be removed from the surface and the pores. Stubborn film forming layers of sealer can be removed with **LTP SOLVEX** before washing with **LTP GRIMEX**
- To help remove years of ground in dirt and grime dilute **LTP GRIMEX** 1:10 with water and apply to the surface. This should be left for 5-10 minutes.
- Agitate the surface using a white pad, scrubbing brush or rotary scrubbing machine.
- Continue to scrub while adding clean water. Remove released residues using a sponge and water or extract using a wet vac.
- Rinse thoroughly with clean water to remove any remaining residues.
- Surfaces should be thoroughly dry before sealing.
- For the removal of other types of dirt see the table below.
- Do not use acid based cleaners on encaustic tiles.

### OTHER TYPES OF DIRT

Care product residues, oil, grease and dirt	LTP Grimex
Wax and acrylic layers, paint and epoxy grout residues	LTP Solvex
Light cement films and lime residues	LTP Power Stripper
Rust stains	LTP Rust Stain Remover

## 2 PROTECTIVE TREATMENTS

- LTP Mattstone H20, LTP Mattstone** and **LTP Colour Intensifier & Stainblock** will render the surface water and oil repellent.
- They will help prevent staining, aid cleaning and simplify the removal of stains.
- LTP Mattstone H20** and **LTP Mattstone** will not greatly alter the character of treated surfaces.
- LTP Colour Intensifier & Stainblock** will enhance the appearance of the treated surfaces, but leave a natural finish.
- There are no health concerns once the product has properly cured.
- All are breathable so can be used on surfaces that are still slightly damp or have no damp proof course.
- Cleaned appropriately using **LTP Waxwash** we would suggest topping up the protective treatment every 3 – 4 years.
- Suitable for internal and external use.

## 3 AFTERCARE



### LTP Waxwash

**High quality every day after care cleaner floor wash that is suitable for interior and exterior use.**

A gentle cleaner especially formulated to clean natural stone, porcelain and ceramic without damaging the grout, tile or protective treatments, leaving surfaces with a fresh clean fragrance. **1ltr of product will wash a 20m<sup>2</sup> surface approx 40 times.**

NB. Always follow detailed instructions on the product labels. Protect acid sensitive surfaces from contact with acidic substances. Do not use abrasive materials on encaustic tiles. Avoid using steam cleaners, normal detergents or strong bleach cleaners on sealed surfaces as they will gradually remove the protective seal.

*This information is offered without guarantee. The material should be used so as to take account of the local conditions and the surfaces to be treated. In case of doubt, the product should be tried out in an inconspicuous area*



For any LTP product information call our technical helpline  
+ 44 (0) 1823 666213 | [www.ltp-online.co.uk](http://www.ltp-online.co.uk) | [technical@ltp-online.co.uk](mailto:technical@ltp-online.co.uk)  
Tone Est, Milverton Road, Wellington, Somerset, TA21 0AN

