

ENCAUSTIC FLOOR TILES REMOVING STUBBORN GROUT RESIDUES



RESTORATION – CLEANING, SEALING & AFTERCARE – ENCAUSTIC CEMENT FLOOR TILES MARCH 2022

INTENSIVE CLEANING & SEALING GUIDE FOR ENCAUSTIC TILES – REMOVING CEMENT RESIDUES

The following is a cleaning and sealing guide for your encaustic floor tiles. The products and methods specified should ensure that the stains from grout and other spillages are sufficiently removed. Future cleaning and aftercare then made easier following the application of a suitable protective seal.



CLEANING....

1. REMOVING STAINS CAUSED BY DARK GROUT DAMAGE ON UNSEALED ENCAUSTICS

LTP CEMENT, GROUT & SALT RESIDUE REMOVER

Rapid action cleaning agents for removing cement residues, grout stains, salts, efflorescence and other similar deposits. This product can be used in dilute or concentrated form, to assist removal of stubborn residues. **LTP Cement, Grout & Salt Residue Remover** is manufactured using acid replacement technology, which makes it ideal for use on surfaces that are acid sensitive such as limestone, sandstone, chrome and stainless steel.

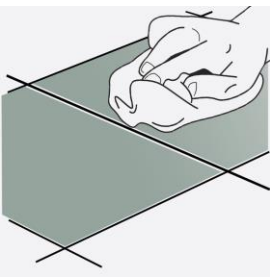


APPLICATION	1 ltr	5 ltr	25 ltr
Mild cases	25 M ² Per Bottle	125 M ² Per Bottle	625 M ² Per Bottle
Severe cases	15 M ² Per Bottle	75 M ² Per Bottle	375 M ² Per Bottle
Extremely severe	5 M ² Per Bottle	25 M ² Per Bottle	125 M ² Per Bottle

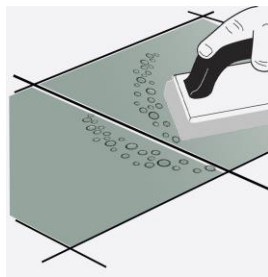
TECHNICAL FEATURES

- High performance
- Targets heavy or light films
- Walls & floors
- Rapid action
- Easy to use
- Acid replacement tech
- High performance
- Targets heavy or light films
- Walls & floors

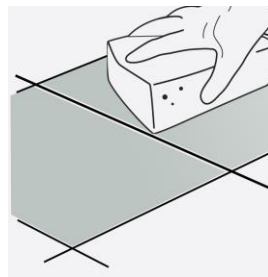
DIRECTIONS FOR USE:



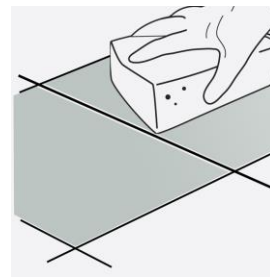
STEP 1.
Dilute solution 1 : 1 with cool water and apply carefully to the surface up to the joints. Try not to overlap onto tiles.



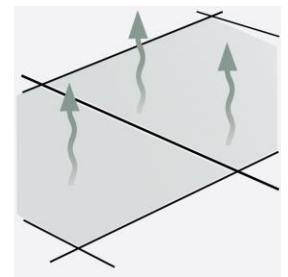
STEP 2.
Agitate immediately using a black emulsifying pad. Keep off of tiles that have not been stained with vinegar.



STEP 3.
Rinse immediately after scrubbing using cold water and a sponge.



STEP 4.
Change rinsing water and rinse again.



STEP 5.
Allow surfaces to dry before continuing with the next step.

This information is offered without guarantee. The material should be used so as to take account of the local conditions and the surfaces to be treated. In case of doubt, the product should be tried out in an inconspicuous area



For any LTP product information call our technical helpline +44 (0) 1823 666213
Visit our website www.ltp-online.co.uk



ENCAUSTIC FLOOR TILES REMOVING STUBBORN GROUT RESIDUES



CLEANING CONT.....

2. CONDITIONING BEFORE SEALING/RE-SEALING

LTP GRIMEX

LTP Grimex is a high performance product for stripping and cleaning of vitrified glazed ceramics, porcelain, travertine, natural stone, sandstone, slate, marble, granite, terracotta, quarry, brick, concrete, external paving, terrazzo and other mineral floors & walls. On larger areas scrubber drier machines can be used. This product will also work extremely well to clean up the dirty grout joints.



APPLICATION	1ltr	5ltr	25ltr
Surface Cleaning	60 M ² Per Bottle	300 M ² Per Bottle	1500 M ² Per Bottle
Deep Stripping	30 M ² Per Bottle	150 M ² Per Bottle	750 M ² Per Bottle
In Extreme Cases	15 M ² Per Bottle	75 M ² Per Bottle	375 M ² Per Bottle

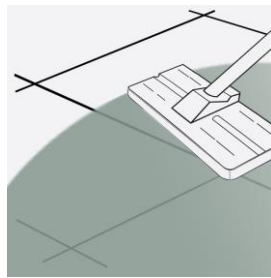
TECHNICAL FEATURES

- Non hazardous
- High performance
- Fast acting
- Easy to use
- Walls & floors
- Interior & exterior use
- Deep cleaning

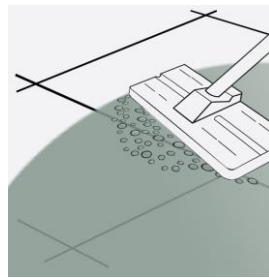
DIRECTIONS FOR USE:



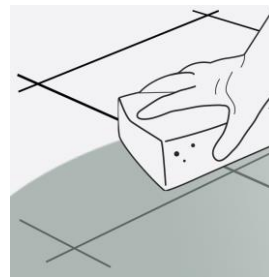
STEP 1.
Dilute solution 1 : 3 with cool water.



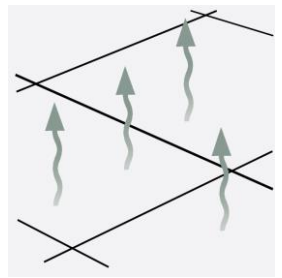
STEP 2.
Working in manageable areas at apply the solution to the surface. Leave for 15 minutes.



STEP 3.
Scrub surfaces and grout joints using a white emulsifying pad to release the dirt and grime.



STEP 4.
Sponge up or extract released residues. Rinse with water a second time and extract again.



STEP 5.
Allow surfaces to dry before allowing traffic or sealing.

FURTHER INFORMATION – INTENSIVE CLEANING:

After applying the cleaning solution work in teams of two. One should agitate the surface. The other should use the sponge for immediate extraction. This will prevent released residues re-absorbing into the surface and greatly reduce the drying time of surfaces.

Try to work in manageable areas at a time and make sure to rinse well with plenty of water after each application. Rinsing should be repeated at least 2 times after cleaning. In areas where the staining is deep repeat the process until all of the stains have gone.

USEFUL EQUIPMENT: 4pc pole, pad holder, white pad, buckets, sponges, absorbant towels (for spillage control), Plastic film and masking tape for covering and protecting any surfaces not to be cleaned. Mop and bucket for rinsing.

Ensure that any sensitive surfaces not to be cleaned are properly covered and protected before beginning. Ensure that gloves and eye protection and suitable clothing are worn. If potable water is used for rinsing we would suggest changing the water after every 5 M².

This information is offered without guarantee. The material should be used so as to take account of the local conditions and the surfaces to be treated. In case of doubt, the product should be tried out in an inconspicuous area



For any LTP product information call our
technical helpline +44 (0) 1823 666213
Visit our website www.ltp-online.co.uk



ENCAUSTIC FLOOR TILES REMOVING STUBBORN GROUT RESIDUES



SEALING....

3. TOPPING UP PROTECTION AFTER INTENSIVE CLEANING...

LTP MATTSTONE OR MATTSTONE H20

A spirit or water based impregnating sealer. Dries to leave surfaces with a delicately enhanced natural finish. Helps protect against staining. Treated surfaces strongly repel water, oil and grease. This product allows surfaces to breathe. Ideal for protecting porous surfaces that do not have a damp proof course. This product is non film forming.

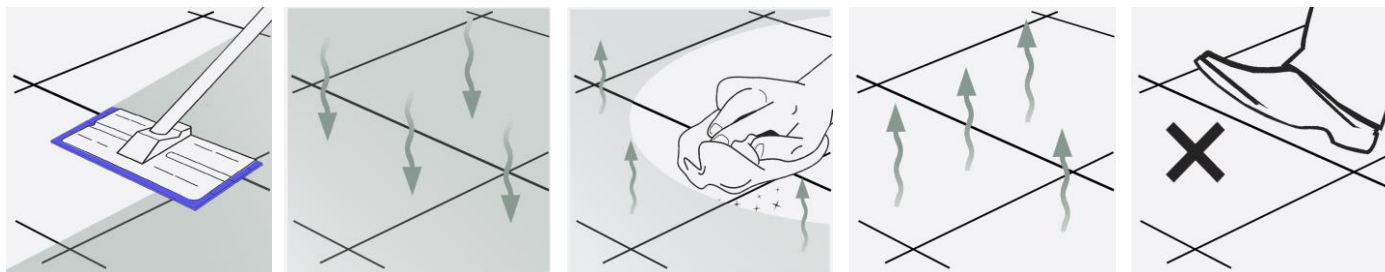


APPLICATION	500 ml	1 ltr	5 ltr
Low porosity surfaces	7.5 M ² Per coat	15 M ² Per coat	75 M ² Per coat
Higher porosity surfaces	2.5 M ² Per coat	5 M ² Per coat	25 M ² Per coat
Polished surfaces	15 M ² Per coat	30 M ² Per coat	150 M ² Per coat

TECHNICAL FEATURES

- Spirit or water based
- Natural finish
- Interior & exterior use
- High performance
- Easy to apply
- Breathable

DIRECTIONS FOR USE:



STEP 1.
Under floor heating should be off. Apply sealer to the surface of the tile & spread out evenly using a sealant applicator.

STEP 2.
Allow sealer to absorb naturally. Apply at 2 hourly intervals until fully saturated.

STEP 3.
45 minutes after applying the final coat of sealer. Buff dry the surface using a microfiber cloth to finish.

STEP 4.
Leave to dry naturally.

STEP 5.
Newly sealed surfaces should be left to dry for a minimum of 12 hours before allowing heavy traffic.

FURTHER INFORMATION - SEALING:

Ensure that any surfaces not to be treated are properly covered and protected before beginning.

LTP Mattstone will make surfaces appear slightly darker following treatment. LTP Mattstone H20 does not greatly alter character.

Remove any excess sealer from the surface of the tiles 45 minutes after each application.

If the sealing products are to be used in areas where food is consumed: Once cured they are completely inert, so therefore considered to be food safe. In areas of high traffic it may be necessary to apply a top up coat of protection every 3 – 4 years. If LTP Waxwash floor tile cleaner is used for the daily/weekly aftercare then a top up coat can be applied without the need to strip the surface back.

This information is offered without guarantee. The material should be used so as to take account of the local conditions and the surfaces to be treated. In case of doubt, the product should be tried out in an inconspicuous area



For any LTP product information call our technical helpline +44 (0) 1823 666213
Visit our website www.ltp-online.co.uk



ENCAUSTIC FLOOR TILES REMOVING STUBBORN GROUT RESIDUES



AFTERCARE.....

4. DAILY/WEEKLY CLEANING...



LTP WAXWASH

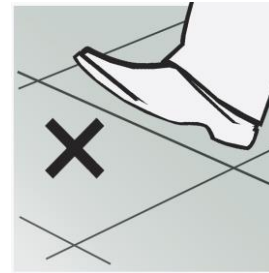
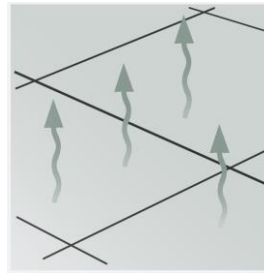
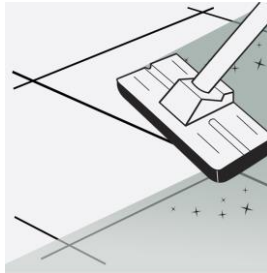
A gentle cleaner especially formulated to clean without damaging the most delicate surfaces. Cleans without removing the protective seal or damaging the stone, leaving the floor with a fresh clean fragrance. Suitable for use on sealed, and un-sealed, polished and unpolished surfaces. Can also be used in scrubber drier machines. For more information refer to the technical data sheet.

APPLICATION	1 ltr	5 ltr	25 ltr
20 M ² surface	40 washes approx	200 washes approx	N/A

TECHNICAL FEATURES

- Environmentally friendly
- PH Neutral
- Phosphate free
- Non film forming
- Commercial & domestic
- Sealed and unsealed surfaces
- Fresh clean fragrance
- Interior & exterior use

DIRECTIONS FOR USE:



**Concentrated
Formula
Up to
40 Washes
From 1 litre**

STEP 1.
Dilute 1 capful of cleaner per litre of water.

STEP 2.
Mop surfaces with the solution.

STEP 3.
No need to rinse. Leave surfaces to dry.

STEP 4.
Keep off of surfaces until they are completely dry.

This information is offered without guarantee. The material should be used so as to take account of the local conditions and the surfaces to be treated. In case of doubt, the product should be tried out in an inconspicuous area



For any LTP product information call our technical helpline +44 (0) 1823 666213
Visit our website www.ltp-online.co.uk

