

# APPLICATION GUIDE 1

## NATURAL STONE – UNPOLISHED

### APPLICATION BY HAND

Travertine, Limestone, Marble, Sandstone, Terrazzo and some Granite



Natural stone has been used on floors and walls for centuries. As with all natural materials, it does require a certain level of care. The following instructions are a guide to help ensure that stone surfaces will remain protected and easy to clean for many years.

**PLEASE NOTE:** Before grouting wash surfaces well with LTP Grimex and once clean and thoroughly dry, apply a minimum of one coat of LTP Mattstone, LTP Mattstone H20 or LTP Colour Intensifier & Stainblock. This treatment will assist with the removal of residual grout and protect the surface of the stone.

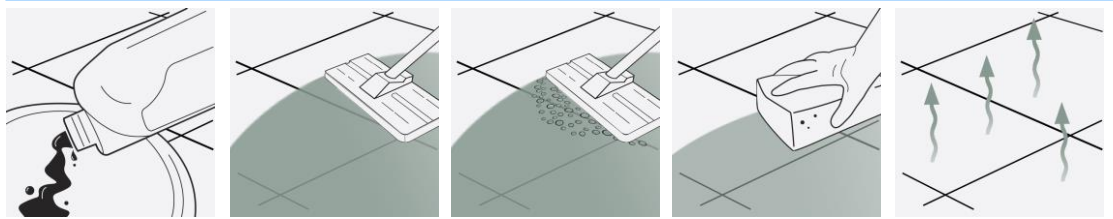
## THREE STEP INSTALLATION INSTRUCTION OVERVIEW (SEE PAGE TWO FOR REFURBISHING EXISTING) March 2022

### LTP GRIMEX



### INITIAL CLEANING OF NEWLY INSTALLED SURFACES IF REQUIRED

**LTP GRIMEX:** Cleans and removes grease, dirt & grime.



**STEP 1.**  
Dilute solution 1:10 with warm water and apply to the surface.

**STEP 2.**  
Working in manageable areas at a time, spread out the solution. Leave for 20 minutes.

**STEP 3.**  
Add a little water and then scrub surfaces to release sediment dirt and grime. Use white pad and pad holder.

**STEP 4.**  
Sponge up released residues. Rinse with water a second time and sponge again.

**STEP 5.**  
Allow surfaces to dry before allowing traffic or sealing.

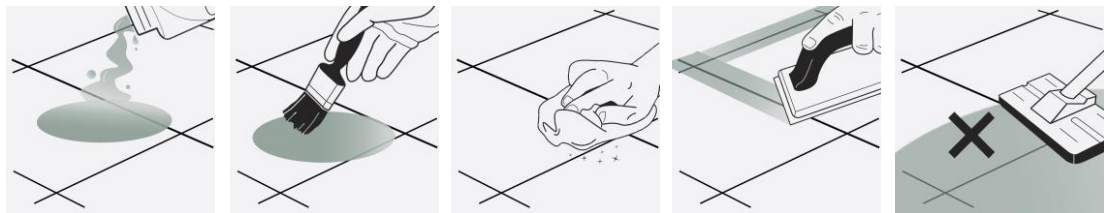
1

### LTP COLOUR INTENSIFIER & STAINBLOCK



### PROTECT AGAINST STAINS - (apply before and after grouting)

**LTP MATTSTONE H20 or LTP MATTSTONE** – protects against water, oil, and grime.  
**Or LTP COLOUR INTENSIFIER & STAINBLOCK** – protects and enhances/natural finish.



**STEP 1.**  
Surfaces must be clean and dry. Underfloor heating must be off.

**STEP 2.**  
Apply the product to the surface evenly using a soft cloth, brush or sealant applicator pad allowing 2 hours between coats.

**STEP 3.**  
After 30 mins remove excess product and avoid pooling on the surface.

**STEP 4.**  
Once grouted, apply final coat, remove excess product.

**STEP 5.**  
Protect from water for 24 hours and do not wash surfaces for at least 3 days.

2

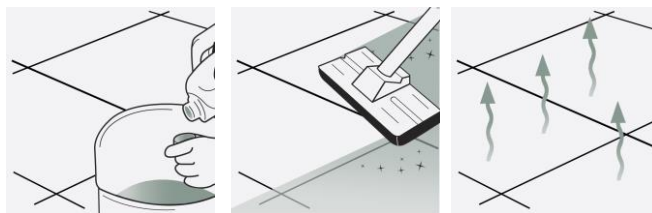
### LTP MATTSTONE H20, LTP MATTSTONE

### LTP WAXWASH



### REGULAR AFTERCARE

**LTP WAXWASH** – Maintains sealed natural tile surfaces. Ph Neutral



**STEP 1.**  
Dilute 1 capful of cleaner per litre of warm water.

**STEP 2.**  
Mop surfaces with the solution. Do not rinse.

**STEP 3.**  
Allow to dry. Do not walk on surface during drying time. (20 minutes).

A 1 ltr LTP Waxwash will wash a 20m<sup>2</sup> floor approx 40 times.

3



For any LTP product information call our technical helpline +44 (0) 1823 666213 Visit our website [www.ltp-online.co.uk](http://www.ltp-online.co.uk)  
Tone Estate, Milverton Road, Wellington, Somerset, TA21 0AN. UK



# APPLICATION GUIDE 1

## NATURAL STONE –UNPOLISHED

### APPLICATION BY HAND

Travertine,Limestone,Marble,Sandstone,Terrazzo and some Granite



## EQUIPMENT REQUIRED:

LTP Tools - 4pc pole, pad holder, sealant applicator, white emulsifying pad, deck brush, claw brush, buffing cloths, buckets, sponges, mops.

Ensure that any sensitive surfaces not to be cleaned are properly covered and protected before beginning. Ensure that gloves, eye protection and suitable water proof clothing are worn at all times.

## 1 CLEANING AND REFURBISHING – Used and heavily soiled surfaces

- Before sealing the stone should be thoroughly cleaned. Old layers of sealer, residues from aftercare cleaners and deposits must be removed from the surface and the pores of the stone. Film forming layers of sealer can be removed with **LTP Solvex** before washing with **LTP Grimex**.
- Depending upon the levels of dirt, dilute **LTP Grimex** 1:3 with water. Apply liberally, spreading over the surface, if necessary agitate with a scrubbing brush and leave to sit on the surface of the tiles for 5-10 mins.
- Agitate the surface using a white emulsifying pad, scrubbing brush or rotary scrubbing machine and leave for a further 5 minutes.
- Continue to scrub while adding clean water. Remove released residues using a sponge and water or extract using a wet vac.
- Rinse thoroughly with clean water to remove any remaining residues.
- Allow the surfaces to dry for a minimum of 24 hours before applying the protective sealer.
- For the removal of other types of dirt refer to the table below.
- Do not use acid based cleaners on limestone or marble. If you are unsure please call our helpline for advice.

## OTHER TYPES OF DIRT

Care product residues, oil, grease and dirt

LTP Grimex or Power Stripper

Wax and acrylic layers, tar,paint,bitumen residues

LTP Solvex and then LTP Grimex

Deeply engrained oil stains

LTP Grimex

Rust Stains

LTP Rust Stain Remover

## 2 PROTECTIVE SEAL TREATMENTS

- **LTP Mattstone H20, LTP Mattstone and LTP Colour Intensifier** will render the surface water and oil repellent.
- Will help prevent staining, aids cleaning and simplifies the removal of surface stains.
- Provides an invisible barrier of protection that will not greatly alter the surface character.
- There are no health concerns once the product has properly cured.
- These sealers are micro porous and so can be used on surfaces that have no damp proof course.
- Suitable for internal and external use.
- If surfaces are properly maintained we recommend touching up the protective treatment every 3-4 years

NB. Always test products on an inconspicuous area before general application. Surfaces that are non absorbent or saturated with moisture cannot be treated. **LTP Mattstone H20, LTP Mattstone** and **LTP Colour Intensifier** are impregnating sealers that need to fully absorb. Do not allow the product to dry on the surface. Carefully buff with a soft cloth or machine to remove any excess. Remove unabsorbed impregnating sealer, if left to dry on the surface, by rubbing over with a little more sealer. Some stones may be darker after application. Acid substances, if left on the surface, may damage acid sensitive stones even after treatment.

## 3 AFTERCARE



### LTP Waxwash (for floors)

**High quality every day after care cleaner floor wash that is suitable for interior and exterior use.**

A gentle cleaner especially formulated to clean natural stone, porcelain and ceramic without damaging the grout, tile or protective treatments, leaving surfaces with a fresh clean fragrance. Suitable for use on both sealed and unsealed, polished and unpolished surfaces. **1 ltr of product will wash a 20 m<sup>2</sup> surface approx 40 times.**



### LTP Stonewash (for walls)

A gentle surface cleaner, which will clean without breaking down and removing protective sealers.

NB. Always follow detailed instructions on the product labels. Protect acid sensitive stone surfaces from contact with acidic substances. Do not use abrasive materials on honed & polished stones. Avoid using steam cleaners, normal detergents or strong bleach cleaners on sealed surfaces as they will gradually remove the protective seal.

*This information is offered without guarantee. The material should be used so as to take account of the local conditions and the surfaces to be treated. In case of doubt, the product should be tried out in an inconspicuous area*



For any LTP product information call our technical helpline  
+44 (0) 1823 666213 Visit our website [www.ltp-online.co.uk](http://www.ltp-online.co.uk)  
Tone Estate, Milverton Road, Wellington, Somerset, TA21 0AN. UK

