

# APPLICATION GUIDE 8

## NATURAL STONE (Work surfaces, fireplace surrounds and hearths)

### APPLICATION BY HAND

Honed and polished granite, marble, limestone, travertine, slate, sandstone (also polished concrete, plaster and artificial stone).



Large pieces of natural stone surfaces that have been sawn, honed and machine polished to a high sheen will normally require a certain level of care. The following instructions are a guide to help ensure that your surfaces will remain protected and easy to clean for many years.

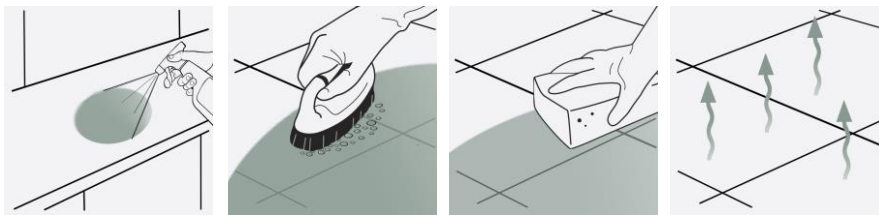
### THREE STEP INSTALLATION INSTRUCTION OVERVIEW (SEE PAGE TWO FOR REFURBISHING EXISTING) March 2022

#### LTP STONECLEAN

#### INITIAL CLEANING OF NEWLY INSTALLED SURFACES IF REQUIRED .

**LTP STONECLEAN INTENSIVE CLEANER** – Cleans & removes dirt and grime including soot and build up of aftercare product.

1



**STEP 1.**

Spray an even layer of foam onto the surface of the stone.

**STEP 2.**

Once the foam has dissolved, agitate with a mild abrasive pad.

**STEP 3.**

Rinse well with plenty of clean water.

**STEP 4.**

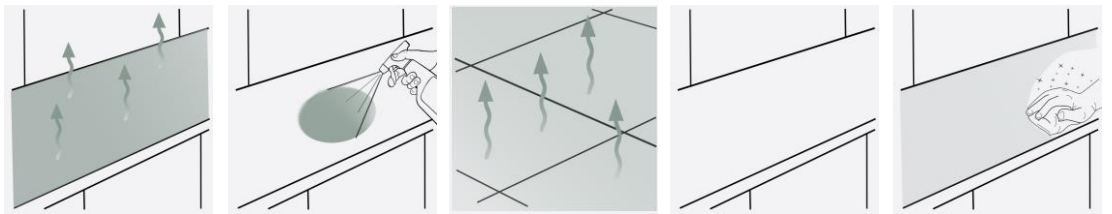
Unpolished surfaces – leave surfaces to dry.  
Polished surfaces – buff to dry.

#### LTP STONESEAL

#### PROTECT AGAINST STAINS

**LTP StoneSeal: Invisible finish-** protects against water, oil, grease, dirt, grime and aids maintenance.

2



**STEP 1.**

Surfaces must be clean and dry.

**STEP 2.**

Spray an even layer of sealer onto the surface of the stone.

**STEP 3.**

**For unpolished surfaces:** Allow sealer to dry for 1 hour. Apply further coats if necessary.

**STEP 4.**

**For unpolished surfaces:** Water resistant after 1 hour. Allow a further 24 hours to fully dry.

**STEP 5.**

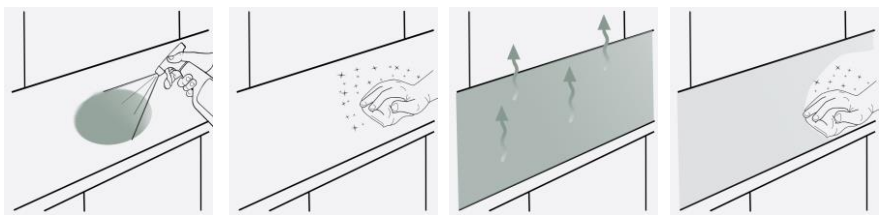
**For polished surfaces:** Buff sealer into the polished surface and remove excess. This should be done while the sealer is still wet on the surface

#### LTP STONECARE

#### REGULAR MAINTENANCE

**LTP STONECARE** – Maintains natural stone surfaces that have been sealed.

3



**STEP 1.**

Spray a small amount of cleaner on to the surface.

**STEP 2.**

Wipe over surfaces with a soft clean dry cloth.

**STEP 3.**

**For unpolished surfaces:** Leave surfaces to dry.

**STEP 4.**

**For polished surfaces:** Finish by buffing with a soft cloth.



For any LTP product information call our technical helpline  
+ 44 (0) 1823 666213 | [www.ltp-online.co.uk](http://www.ltp-online.co.uk) | [technical@ltp-online.co.uk](mailto:technical@ltp-online.co.uk)  
Tone Est, Milverton Road, Wellington, Somerset, TA21 0AN



## APPLICATION GUIDE 8

## NATURAL STONE (Work surfaces, fireplace surrounds and hearths)

## APPLICATION BY HAND

Honed and polished granite, marble, limestone, travertine, slate, sandstone  
(also polished concrete, plaster and artificial stone).



## EQUIPMENT REQUIRED:

LTP Tools – Application Cloth, buffing cloths.

Ensure that any sensitive surfaces not to be cleaned are properly covered and protected before beginning. Ensure that gloves, eye protection and suitable water proof clothing are worn at all times.

## 1 CLEANING AND REFURBISHING – used and heavily soiled surfaces

- Before sealing the stone must be thoroughly cleaned. Old layers of sealer, residues from aftercare products and deposits must be removed from the surface and pores of the stone. Mask and protect surfaces not to be treated.
- Spray LTP Stoneclean onto surfaces, agitate with a nylon pad or scrubbing brush and then leave to sit on the surface for at least 5 minutes. If the solution appears to be drying on the surface, spray a little more solution. Do not let cleaner dry on the surface.
- Agitate again with a nylon pad or scrubbing brush and leave for a further 5 minutes.
- Continue to scrub while adding clean water. Remove residues from the surface using a cloth.
- Rinse thoroughly with clean fresh water to remove all remaining residues.
- Allow the surface to dry for a minimum of 4 hours before applying the protective seal.
- For the removal of other types of dirt see the table below.
- Do not use acid based cleaners on limestone, marble or granite without testing first.

## OTHER TYPES OF DIRT

Care product residues, oil, grease and dirt.

LTP Stoneclean or LTP Powerstripper

Limescale and other calcium deposits.

Remove mechanically with a scraper or sharp blade and then clean with LTP Multipurpose Cleaner

Deeply engrained oil stains.

LTP Grimex

Rust stains.

LTP Rust Stain Remover

## 2 PROTECTIVE SEAL TREATMENTS

- **LTP Stoneseal** will render the surface water and oil repellent.
- This product will help prevent staining, aids cleaning and simplify the removal of stains.
- Provides an invisible barrier that will not greatly alter the surface character.
- There are no health concerns once the product has properly cured.
- If surfaces are properly maintained we recommend touching up the protective treatment every year.

NB. Always test products on an inconspicuous area before general application. Wet or non-absorbent surfaces cannot be treated. **LTP Stoneseal** is an impregnator which needs to fully absorb. Do not allow the product to dry on the surface. Carefully buff with a soft cloth to remove any excess within the given time. Remove any unabsorbed sealer, if left to dry on the surface, by rubbing over with a little more sealer. Some stones may appear darker after application. Acidic substances, if left on the surface, may damage stone, even after sealing.

## 3 AFTERCARE



## LTP Stonecare 250ml

This gentle surface cleaner is formulated for use on mechanically polished or honed limestone, marble, granite, slate and sandstone. This product will clean without breaking down and removing the protective seal. Ideal for everyday use. Non rinse formula. When dry, mechanically polished surfaces should be buffed with a clean dry cloth.

NB. Always follow detailed instructions on the product labels. Protect acid sensitive stone surfaces from contact with acidic substances. Do not use abrasive materials on honed and polished stones. Avoid using steam cleaners, jet washers, normal detergents or strong bleach cleaners on sealed surfaces as they can cause damage to the surface and will gradually remove the protective seal.

*This information is offered without guarantee. The material should be used so as to take account of the local conditions and the surfaces to be treated. In case of doubt, the product should be tried out in an inconspicuous area*



For any LTP product information call our technical helpline  
+ 44 (0) 1823 666213 | [www.ltp-online.co.uk](http://www.ltp-online.co.uk) | [technical@ltp-online.co.uk](mailto:technical@ltp-online.co.uk)  
Tone Est, Milverton Road, Wellington, Somerset, TA21 0AN

