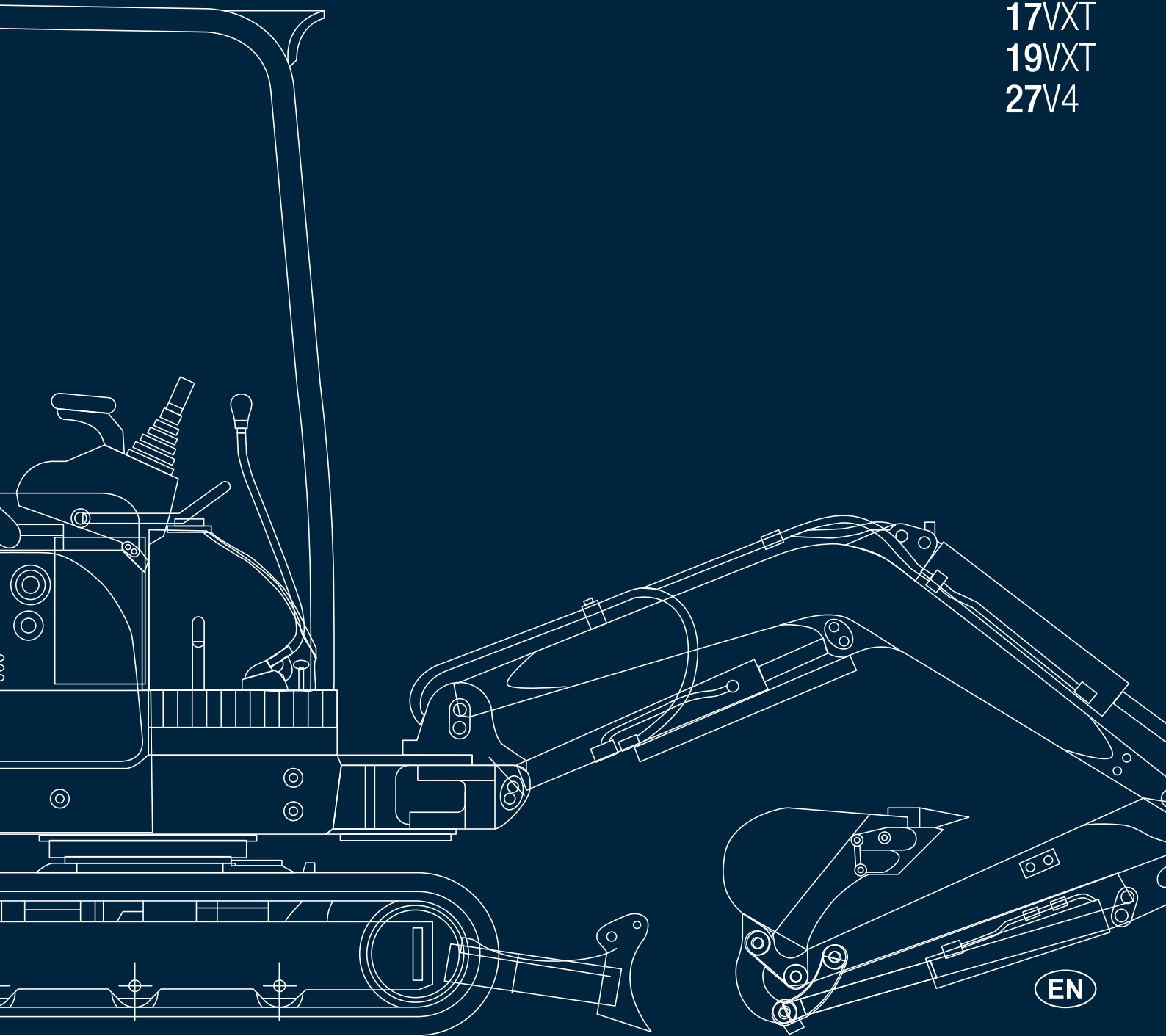


MINI-EXCAVATORS

0.9 / 2.7 TONS

9VXE
12VXE
17VXE
17VXT
19VXT
27V4



9VXE

WHERE OTHERS CANNOT REACH

Power and speed of digging are assured when working in confined spaces: in small restructuring work, in operations of digging and maintenance of sewerage systems, also in tunnels where larger machines cannot operate, but also in the gardening and nursery sector.



MINI-EXCAVATORS 0.9 / 2.7 TONS



COMPACT SIZE

Front turning radius with swing: 950 mm.
Machine width in narrow configuration: 700 mm.

TWO TRAVELLING SPEEDS

The two travelling speeds (1.7/3.5 km/h) enable efficient travelling and maximum manoeuvrability during operations on site along with fast driving. The pedal of the second speed is easy to use.

A YANMAR 7.3 KW DIESEL ENGINE

The YANMAR TNV series engine and the hydraulic circuit that uses two gear pumps assure a high operating speed and simultaneous movements. The engine with a low speed of rotation, enables the utmost efficiency with low consumption and limits polluting emissions according to the antipollution requirements of EPA Tier 4. The exploitation index is reduced to improve durability and reliability over time.

Slewing motor

Despite the machine's small size, the slewing motor is equipped with an automatic brake to lock the turret in any position.



Zero-tail: to adapt to every situation

Thanks to its extremely short rear turning radius of 485 mm, while slewing the chassis frame turns within the clearance of the tracks with the carriage extended and allows greater safety both for the machine and for the operator. If the carriage is closed access into confined spaces is facilitated. The auxiliary system version is available as an optional for the hydraulic breaker and other attachments.



CHECKING AND MAINTENANCE

The fully opening engine bonnet provides an easy view of most of the engine and allows easy accessibility to the various components for operations of inspection and maintenance. The battery has reduced maintenance. The resin tank has been designed to avoid damage from rust and the aluminium radiator ensures a greater exchange of heat and high resistance to corrosion. The high capacity air filter increases the length of time between maintenance.



ROLLERS

Rollers with a double, outer side, support reduce wear on the tracks, improve load distribution and increase operational stability.



WORK OUTFIT

The remarkable geometry of the arm movement and the minimal distance between bucket and dozer blade enable performing excavation operations even close to the dozer blade. The lifting cylinder is supported by a safety plate and all the feed pipes of the cylinders of the bucket and swing mechanism are well protected. The auxiliary hydraulic circuit with the system is combined for using many hydraulic attachments.



Variable gauge undercarriage

Thanks to its extensible frame (700 - 950 mm) the 9VXE ensures high versatility. Access is permitted into really limited spaces and extending the carriage in very few seconds provides a high safety level and considerable operational stability.



COMFORT AND SAFETY

Designed around the operator, the driving position is comfortable thanks to the adjustable seat and ergonomic controls. The driving seat can be accessed from both sides. The 9VXE is equipped with DCS Direct Control System controls that assure maximum precision. The control pedals of the auxiliary circuit and swing are separate. Both pedals can be folded back thereby increasing the space at the operator's feet. The control monitor is easy to read. A safety device checks access to the driving seat, if the lever is lifted it prevents movements of the arm. A front bar assures the operator a safe and protected driving seat; at the rear the machine is well protected by a cast bumper.



RETRACTABLE DOZER BLADE EXTENSION

The blade width can be easily adjusted, offering the flexibility to fix the job. Adjustment is simple and easy with two fastening pins.

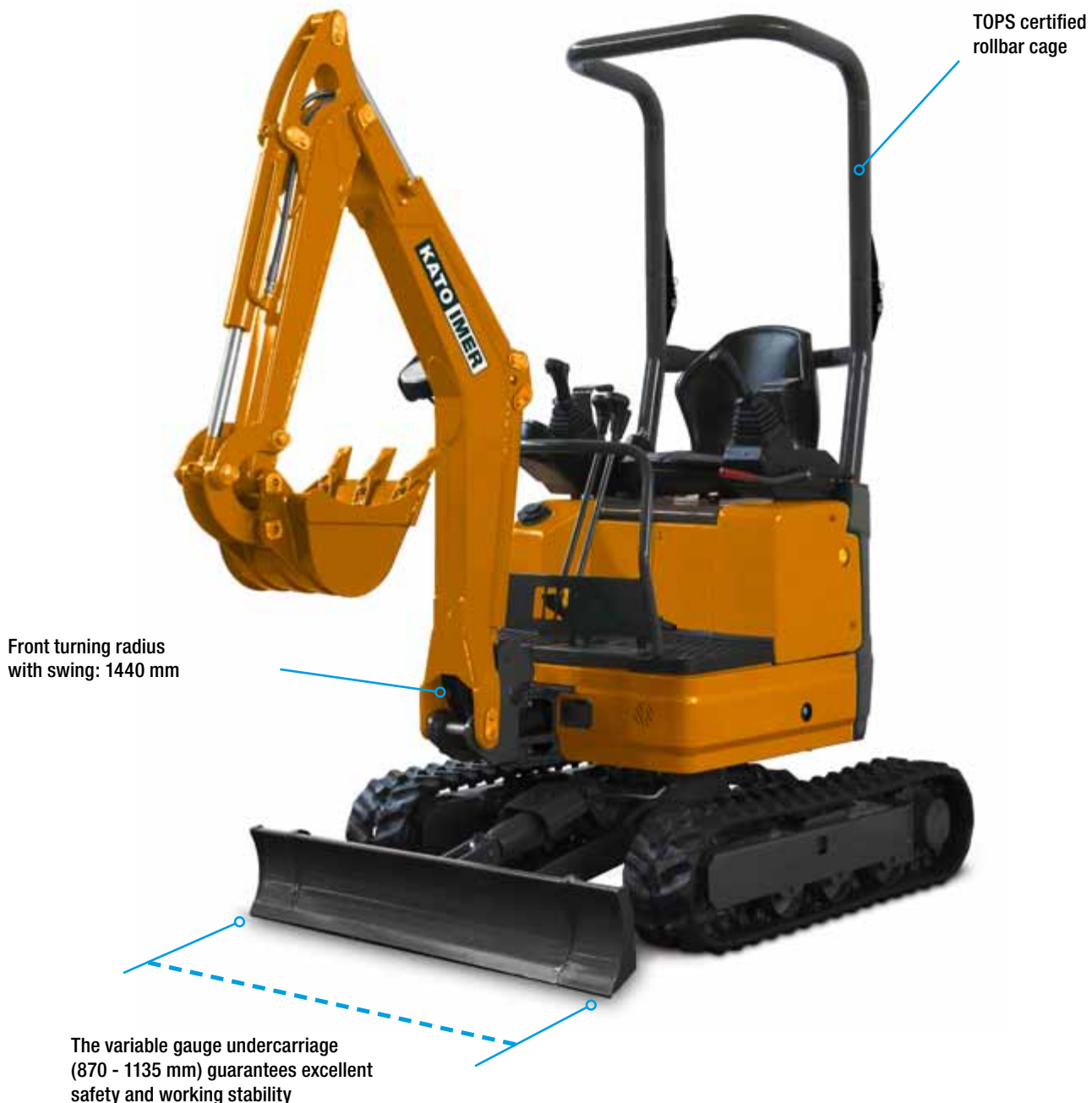
TECHNICAL DATA

Engine	Yanmar 2TNV70
N° cylinders / displacement	2 / 570 cc
Rated power	7.3 kW / 2400 rpm
Machine weight with rubber shoe	890 kg (no canopy)
Operating weight	965 kg (no canopy)
Max. digging depth	1570 / 1770 mm (with long arm)
Front turning radius	1220 / 1320 mm (with long arm)
Bucket digging force	1090 kgf
Standard bucket width	370 mm
Standard bucket capacity	0.022 m ³

12VXE

SMALL AND POWERFUL

The 12VXE is a completely new concept: small enough to pass through a door. Robust enough to do jobs above its category. An exceptional machine. With its 9.5 kW engine and digging depth of 2010 mm it handles heavy work in the most challenging conditions with ease.





REAR FRAME WITHIN CLEARANCE

While slewing, the chassis frame turns within the clearance of the tracks with the carriage extended, allowing greater safety for the machine and for the operator. With the carriage closed, the machine can access even the most restricted spaces. With a width of 870 mm and a tilt-back rollbar, the machine is perfect for restructuring interiors.

COMPACT SIZE

The perfect combination of small size and high power. The 12VE gives access to previous inaccessible spaces, for working in interiors or passing through buildings to access internal gardens or courtyards which are otherwise almost impossible to get to.

TWO TRAVELLING SPEEDS

The two travelling speeds (2.3 / 4.0 km / h) enable moving quickly on site along with maximum manoeuvrability.



With 184 cm the turning diameter is reduced

Weight 1180 kg ideal for transport on trucks in the 3.5 ton category





VARIABLE GAUGE UNDERCARRIAGE

Thanks to the extensible frame (870 - 1135 mm) the 12VXE ensures considerable safety and operational stability during side excavation and lifting operations in confined spaces or on particularly uneven or steep ground. The circular tube improves extension while reducing backlash.

SAFETY

The TOPS certified rollbar cage (an optional FOPS cover is available) ensures outstanding working visibility. The arm movements are softened by the Anti-Shock valve in the hydraulic circuit. In the phase of lifting the 1st arm the shock of stopping at the arm limit stop is reduced by the cylinder shock-absorbing system. The slew brake motor prevents accidental arm movements during transport or when the machine is parked. The arm swinging is controlled by the LH joystick. The auxiliary circuit control pedal is equipped with a tilt-away guard which acts both as a foot rest and circuit lock for remote operation.



The 12VXE can drive through doors no more than 90 cm wide. The rollbar can also be removed in just a few minutes to facilitate passing through low clearance areas.



RETRACTABLE DOZER BLADE EXTENSION

The blade width can be easily adjusted, offering the flexibility to fix the job. Adjustment is simple and easy with two fastening pins.



MINI-EXCAVATORS 0.9 / 2.7 TONS



ACCESSIBILITY AND EASY MAINTENANCE

The 12VXE's vertically-opening engine hood provides easier access and visibility of most of the engine along with easy accessibility for daily inspection (oil-filters-belts) and maintenance. The battery requires reduced maintenance. The diesel tank is generously sized to allow the machine to be run for an entire day in normal use. It is easy to access for refuelling and protected with a key-operated cap. The pumps are equipped with pressure-gauge points to facilitate monitoring hydraulic pressure value.

YANMAR 9.5 KW DIESEL ENGINE

The 3-cylinder engine runs at low speed with a reduced exploitation index for improved durability and long-term reliability. The air filter with its high filtering capacity is composed of a double cartridge that reduces maintenance and increases the reliability of the engine. The fuel circuit is equipped with a diesel filter with a water separator, ensuring a long engine life. The high efficiency of the engine combined with an advanced hydraulic system ensures low fuel consumption and low running noise, and limits polluting emissions according to the antipollution requirements of EPA Tier 4.

HYDRAULIC CIRCUIT

The circuit includes two variable capacity pumps integrated with the Straight Travel system on the blade section, and a separate gear pump for the servo-controls, thus guaranteeing a perfect balance of operating speed and force. Precise and simultaneous manoeuvres are assured with no loss of power or drop in engine speed. The 12VXE succeeds in moving forward while performing working operations without losing any linearity in the trajectory.

AUXILIARY HYDRAULIC CIRCUIT

The auxiliary hydraulic circuit for hydraulic attachments such as a hydraulic breaker, shears, hydraulic grippers and drills is supplied as standard as far as the 2nd arm. A deviator valve selects single - or double - action operation.



COMFORT AND SAFETY

The operator position is especially comfortable, thanks to the adjustable bucket seat design and wrist supports and ergonomic control layout. It is equipped as standard with servo-assisted joysticks that ensure the utmost precision. Two safety levers control access to the driving seat and, if lifted, inhibit all the machine working and travelling controls. The multifunction analogue control display - hour meter, fuel level, oil temperature and warning lights - is user friendly and facilitates the work of less expert operators, thus increasing their productivity.



WORKLIGHT

The arm mounts a worklight for a perfect view of the dig.

TECHNICAL DATA

Engine	Yanmar 3TNM68
N° cylinders/displacement	3 / 784 cc
Rated power	9.5 kW / 2200 rpm
Machine weight with rollbar	1180 kg
Operating weight with rollbar	1255 kg
Max. digging depth	2010 mm
Front turning radius	1530 mm
Bucket digging force	1210 kgf
Standard bucket width	400 mm
Standard bucket capacity	0.036 m ³

17VXE

WHERE OTHERS CANNOT REACH

The mini-excavator 17VXE, the new ultra-compact model, utilizes the technology of higher class machines. Power and speed of excavation are assured when working in confined spaces: in small restructuring work, in operations of excavation and maintenance of sewerage systems, in tunnels where larger machines cannot operate, but also in the gardening and nursery sector.

Quick moving on site and
maximum manoeuvrability



Considerable safety and operational stability during
side excavation and lifting operations in confined
spaces or on particularly uneven or steep ground

MINI-EXCAVATORS 0.9 / 2.7 TONS

3TNV70 YANMAR 10.5 KW DIESEL ENGINE

The 3-cylinder engine has a low speed of rotation and a reduced exploitation index to improve durability and reliability over time. The air filter with its high filtering capacity is composed of a double cartridge that reduces maintenance and increases the reliability of the engine. The fuel circuit is equipped with a diesel filter with a water separator, ensuring a long engine life. The high efficiency of the engine combined with an advanced hydraulic system ensures low fuel consumption and less noise and limits polluting emissions according to the antipollution requirements of EPA Tier 4.

TWO TRAVELLING SPEEDS

The two travelling speeds (2.1 / 4.0 km / h) enable moving quickly on site along with maximum manoeuvrability.



COMFORT AND SAFETY

The position is comfortable thanks to the adjustable spring seat, horizontal adjustment, tilting backrest and ergonomic layout of the controls. It is equipped as standard with servo-assisted joysticks that ensure the utmost precision. The safety lever controls access to the driving seat and, if lifted, inhibits all the machine working and travelling controls. The instrumentation console is rational and user-friendly. Behind the seat there is a document holder.

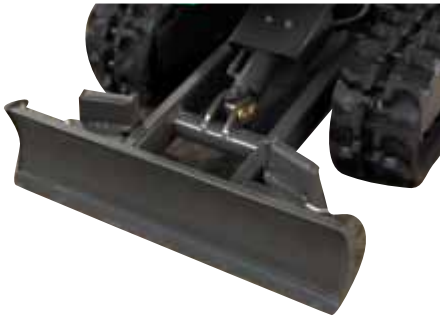
WORK OUTFIT

The auxiliary hydraulic circuit for using various hydraulic attachments is installed as standard up to the arm. The system uses a valve to return the oil directly to the hydraulic reservoir. A pedal locking device enables using manually controlled hydraulic equipment. As an optional there is a version with a long arm to increase the digging depth (max 2310 mm). The second speed push-button control is provided.



REAR FRAME WITHIN CLEARANCE

While slewing, the chassis frame turns within the clearance of the tracks with the carriage extended, allowing greater safety for the machine and for the operator. If the carriage is closed access into confined spaces is facilitated. It is available in the rubber track or iron track version, with a canopy with 4 pillars with TOPS-FOPS protection (conforming to EU safety regulations).



OPERATIONAL FLEXIBILITY

When the machine is working with the carriage closed, the two extensible sections of the blade are easily stored behind the blade itself. A lever via a function selector controls the movement of the blade or the expansion of the undercarriage.



FULLY VERSATILE

The special geometry of the arm and the movement combined with the minimal distance between bucket and dozer blade enable excavating and loading materials of a large size even close to the dozer blade.

SOLIDITY AND STABILITY

The long carriage (1570 mm) besides helping reduce the specific pressure on the ground also ensures great front stability even with the blade raised. The travelling unit is integrated in the width of the tracks.



HYDRAULIC CIRCUIT

It uses two variable displacement pumps and two gear pumps, ensuring constant balancing between operational speed and working forces. Precise and simultaneous manoeuvres are assured with no loss of power or drop in engine speed. The 17VXE succeeds in moving forward while performing working operations without losing any linearity in the trajectory.



ACCESSIBILITY AND EASY MAINTENANCE

The side opening engine bonnet provides easier access and visibility of most of the engine and allows easy accessibility to the various components for operations of daily inspection (oil-filters-belts) and maintenance. The battery requires reduced maintenance. Refuelling with diesel is done via handy and easy access with a lockable cap. Checking the operating pressures is facilitated by quick couplers on the pumps.

Safety

When lifting the boom, the cylinder has a shock-absorbing system for giving smoothness at the end of the stroke.

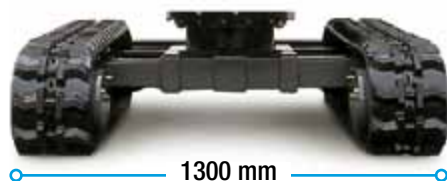
A similar system comes into action. A similar system is working when the swing bearing is swinging.

The arm movements are softened by the Anti-Shock valve in the hydraulic circuit.

The canopy ensures a full view for the operator.

The self braking motor prevents accidental movement when the operator is away.

The pedals controlling the auxiliary circuit and swing are separate and strengthened with sturdy guards with the function of a footrest.



VARIABLE GAUGE UNDERCARRIAGE

Thanks to the extensible frame (980 - 1300 mm) the 17VXE ensures considerable safety and operational stability during side excavation and lifting operations in confined spaces or on particularly uneven or steep ground. Sites with reduced manoeuvring spaces are no longer a problem.

TECHNICAL DATA

Engine	Yanmar 3TNV70
N° cylinders/displacement	3 / 854 cc
Rated power	10.5 kW / 2300 rpm
Machine weight with canopy	1615 / 1675 kg (rubber shoe / steel shoe)
Operating weight with canopy	1690 / 1750 kg (rubber shoe / steel shoe)
Max. digging depth	2350 mm
Front turning radius	1580 mm
Bucket digging force	1600 kgf
Standard bucket width	400 mm
Standard bucket capacity	0.040 m ³

17VXT

MINI 17VXT

With an operating weight of 1730 kg and thanks to the long arm of 1200 mm the 17VXT reaches a digging depth of 2360 mm. The two-travel speed (2.1-4.1 km/h) offers excellent handling and maximum manoeuvrability.

There are big advantages in filling operations with the dozer blade.

Proportion controls on the aux. system joy-stick are available as optional

Battery-disconnecting switch: protects the battery when the machine is not used for long periods

Accessibility and easy maintenance

Fuel saving, less noise and reduced emissions





SHORT RADIUS

The use of a short-radius frame with turning radius of 960 mm offers compactness and operating stability. Reliability and durability are guaranteed by the solid structure of the undercarriage and the rotating upper frame.

EXCELLENT DIGGING PERFORMANCE

The solid structure of the undercarriage and the arm geometries guarantee reliability, durability and adaptability in any operating area, with excellent digging performance.



ACCESSIBILITY AND EASY MAINTENANCE

The side-opening bonnet facilitates engine accessibility and visibility for any type of control and maintenance operations. The battery requires reduced maintenance. Refuelling is facilitated by a large filler with cap and key. The bonnets and doors, all in pressed steel sheet, are designed to allow quick and easy maintenance operations.

YANMAR 3TNV70 10.5 KW ENGINE

The 854 cc 3-cylinder Diesel engine features low emissions and significantly quieter operation. The limited engine capacity together with an advanced hydraulic system guarantee considerable fuel economy (reduced to just 272 g / kWh), quieter operation and limited pollutant emissions according to the antipollution requirements of EPA Tier 4.

HYDRAULIC CIRCUIT

The hydraulic system uses two variable-displacement pumps and a gear pump. Engine power is exploited with maximum efficiency, ensuring high speed and precision in simultaneous forward movement and work operations.

POWER SHIFT, ANTIDRIFT AND TRACTION LOCK SYSTEM

The innovative and sophisticated distributor is designed to guarantee optimum balance of operations, by means of the "Power Shift" system-sum of capacities. The 16VXT, 17VXT and 19VXT models are equipped with an "Antidrift System" (on arm cylinder) and "Traction lock".

TECHNICAL DATA

Engine	Yanmar 3TNV70
N° cylinders/displacement	3 / 854 cc direct injection
Rated power	10.5 kW / 2300 rpm
Machine weight with rubber shoe	1655 / 1815 kg (canopy / cab)
Operating weight	1730 / 1890 kg (canopy / cab)
Max. digging depth	2360 mm
Front turning radius	1573 mm
Bucket digging force	1600 kgf
Standard bucket width	400 mm
Standard bucket capacity	0.044 m ³

19VXT

VARIABLE GAUGE UNDERCARRIAGE

Ideal for operating in rough and narrow places, thanks to the expandable undercarriage (from 980 to 1300 mm) operated by an electric control located on the blade control lever, it offers high operating stability and versatility.

With an operating weight of 1745 kg, the 19VXT is the top machine in its category.



MINI-EXCAVATORS 0.9 / 2.7 TONS

DIGGING AREA

The 17VXT and 19VXT models offer optimum 360° visibility, both for the version with canopy and that with cab, thanks to large windows. Two adjustable front work lights, protected to prevent accidental breakage, allow the operator to make use of optimum lighting of the work area. The arm geometries offer excellent digging performance down to a depth of 2460 mm.

AUXILIARY SYSTEM

The VXT series is equipped with an auxiliary hydraulic circuit for the use of accessories, with prearrangement of the system up to the foremost arm in the 17VXT and 19VXT.

A deviator valve selects single - or double - action operation.



HIGH COMFORT FOR THE OPERATOR

The work station is comfortable thanks to the adjustable sprung seat, ergonomic controls and servo-assisted joy-sticks that ensure maximum precision. The machines can be fitted with cabs with radio, openable front window, windscreen wiper, heater and rear glove box that ensure a high quality standard. If the driving position is abandoned, a system inhibits all operation functions concerning the first arm, foremost arm, bucket, upper frame rotation and travel.



AVAILABLE IN CAB VERSION

Featuring an innovative and refined design, the cabs of VXT series mini-excavators ensure maximum protection for the operator. Both the cab and the canopy (with 4 uprights) comply with international standards: TOPS (side tipping protection), ROPS (rollover protection) and FOPS (protection against objects falling from above). The harmonious shapes of the cabs and the ample windows are designed to offer comfort and optimum operating visibility.



TECHNICAL DATA

Engine	Yanmar 3TNV70
N° cylinders/displacement	3 / 854 cc direct injection
Rated power	10.5 kW / 2300 rpm
Machine weight with rubber shoe	1670 / 1830 kg (canopy / cab)
Operating weight	1745 / 1905 kg (canopy / cab)
Max. digging depth	2460 mm
Front turning radius	1663 mm
Bucket digging force	1600 kgf
Standard bucket width	400 mm
Standard bucket capacity	0.044 m ³

27V4

KATO TECHNOLOGY

The frame turning within the clearance of the tracks facilitates digging and loading also close to walls or places with little space available. The rotation speed of 9 revolutions/min enables higher performance at work. Bucket digging force 21.0 kN. SHIBAURA S773-C Engine.

BLADE AND ARM CYLINDER PROTECTION

For easier maintenance, the pipes of the cylinder, bucket and arm are modular with external connections

SAFE ACCESS TO THE MACHINE

In the cab version, as in the canopy version, access to the driving position is comfortable thanks to the handholds

SHEET GUARD

Robust and compact structure

THE 3-PUMP ALL-POWER SYSTEM ENSURES AGILITY

The 3-pump power-shift system allows independent operation of the arm, foremost arm and rotation. The operations are agile, fast and powerful in response to the operator

REINFORCED BLADE

The upper reinforced framed part ensures greater impact resistance; the blade contact to the ground was increased.

POWERFUL EXCAVATION

The hydraulic system redesign, together with a review of the hinge points, ensures a more powerful digging



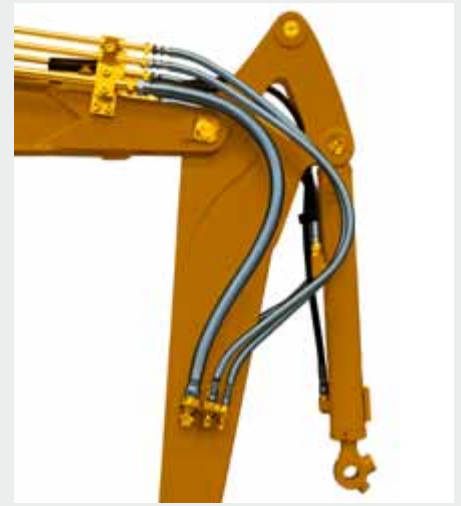


HYDRAULIC SYSTEM

Accurate sizing of the hydraulic system allows to develop a bucket digging force of 21.0 kN (2140 kgf).

OPTIONAL AUXILIARY SYSTEM

In addition to the standard auxiliary hydraulic circuit, there are two additional optional hydraulic circuits, which allow to use multiple equipment such as hydraulic hammers, shears, hydraulic clamps, augers, adjustable and multifunctional buckets. The pedal arm rotation has two functions: swinging and second auxiliary line, after preselection.



INSTRUMENTATION DESIGNED FOR THE OPERATOR

The new instrumentation to the right and left is designed for the operator's total comfort. The manual controls are all on the right: all operations, except arm rotation can be carried out manually. The front monitor of new generation facilitates greater control by the operator during work. The servo-assisted joystick controls ensure the utmost precision during all operations. Ergonomic arrangement of all controls.

Electrical outlet and lighter

Lever blade with two-speed button

Monitor the new angle improves visibility while driving

Ergonomic joystick

1st auxiliary system proportional control (std.)

all operations are controlled by a pivot valve for light operations. The switch on the right of the joystick allows easy and proportional manoeuvres to the auxiliary hydraulic system.

3rd auxiliary system control (opt.)

Cushioned bucket seat. Fabric seat available as an optional

2nd auxiliary system control (opt.)

Ergonomic joystick

Lock system it operates when the safety lever is raised; all operations including engine start, automatic parking brake, blade shift and move the are inhibited



LESS MAINTENANCE AND LONGER LIFE

In 27V4 large pins and new bushings, allow long greasing intervals together with increased durability.

HIGH CAPACITY TANK

The large tank with capacity of 42 litres allows greater operational autonomy and increased productivity.

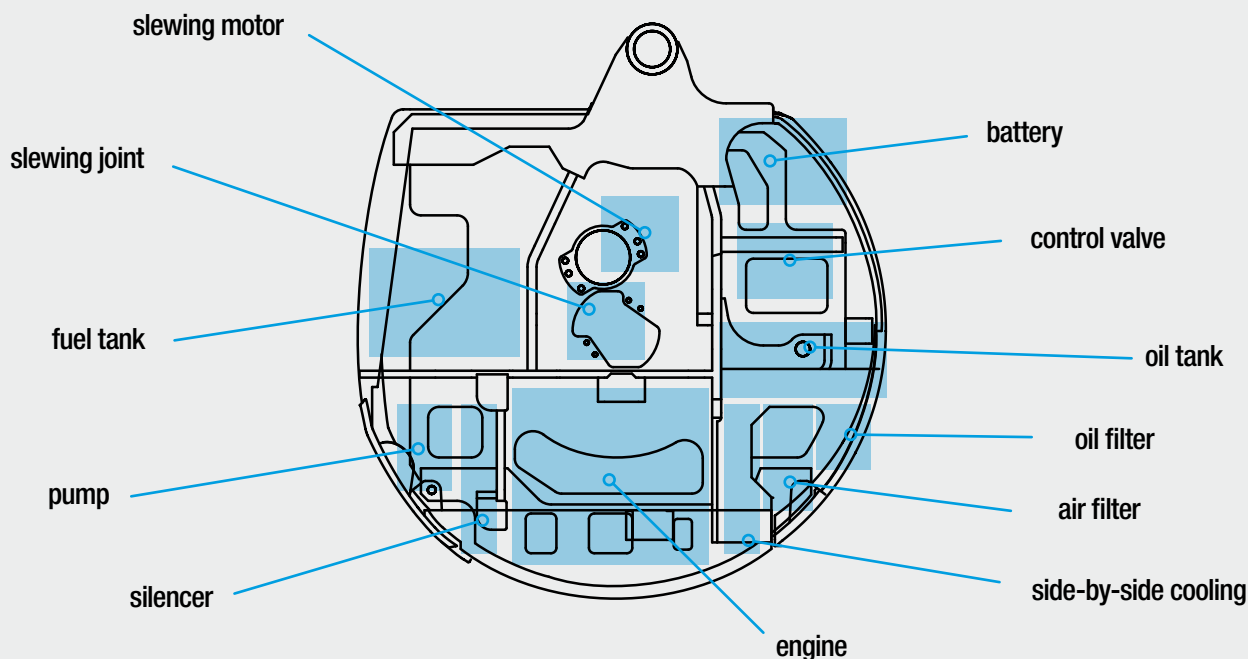
SHIBAURA S773-C 13.6 KW ENGINE

Compact, small, light and simple. High efficiency of power and torque, low fuel and oil consumption, fuel pollution emissions reduced to a minimum, easy maintenance with lower production and operation costs. It complies with the regulations in force concerning pollutants emissions.



unified design for models of the V4 series

- Spare parts uniformity and interchangeability
- Components lay-out unification
- Well balanced design to ensure high performance and stability



"Central" halogen worklight fitted in the arm



The asymmetric position of the arm compared to the fifth wheel, increases operator's digging visibility

RECYCLABLE MATERIALS

All materials used for the construction of the 27V4, steel plates, cast iron and plastic, are 97% recyclable.



EXCEPTIONAL STABILITY

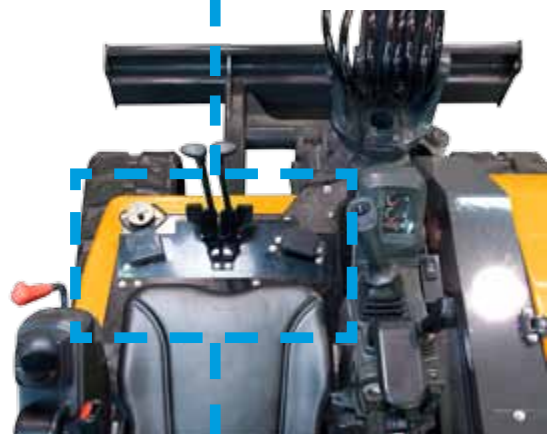
The machine is designed to ensure balance. Digging, lifting and loading can be carried out ensuring excellent stability.

EXCELLENT WEIGHT DISTRIBUTION

The undercarriage of large dimensions and a perfect distribution of the weights, allow very great stability, greater than conventional machines of the same category. The machine is stable even in particularly critical situations or on muddy ground. The cylinder of the large blade is well protected against knocks and damage.

+20%

SPACE FOR THE LEGS



The larger cab provides more comfort and less stress. The design of the reduced pedals ensures more space for the legs.

MINI-EXCAVATORS 0.9 / 2.7 TONS

VERSIONS AVAILABLE: CANOPY AND CAB

The 27V4 is available with 4-post canopy and cab, both TOPS certified against tipping, ROPS against rolling and FOPS against falling objects. The new cab is larger, offers a high level of comfort for the operator with plenty of space inside for the legs and large window surfaces. Easily removable front windshield positioned under the roof, sliding side window. The viscous support for the cab is effective for vibration and noise reduction; absorbing the shock, it ensures comfort inside the cab.



TOTAL ACCESSIBILITY

Large bonnets allow access to the engine and distributor, filters and radiator for inspection and maintenance. All the maintenance points are concentrated under the lateral bonnet such as hydraulic oil, radiator fluid level and supply and battery inspection.

is equipped with an extra radiator for the hydraulic oil cooling to prevent overheating caused by continuous work. is equipped with a drain valve and water sedimentation filter.



TECHNICAL DATA

Engine	SHIBAURA S773-C
N° cylinders/displacement	3 / 1131 cc
Rated power	13.6 kW / 2400 rpm
Machine weight with rubber shoe	2560 / 2730 kg (canopy / cab)
Operating weight	2635 / 2805 kg (canopy / cab)
Max. digging depth	2440 / 2740 mm (with long arm)
Front turning radius	2030 / 2090 mm (with long arm)
Bucket digging force	2140 kgf
Standard bucket width	500 mm
Standard bucket capacity	0.064 m ³

features

	9VXE	12VXE	17VXE
GENERAL SPECIFICATIONS			
Standard bucket capacity	0.022 m³	0.036 m³	0.040 m³
Standard bucket width	370 mm	400 mm	400 mm
Machine weight RS* Canopy / Cab	890 kg (no canopy)	1180 kg	1615 kg
Operating weight RS* Canopy / Cab	965 kg (no canopy)	1255 kg	1690 kg
Transport dimensions	720 x 2700 x 1405 mm	3100 x 870 x 2280 mm	3380 x 980 x 2330 mm
Gradeability	30°	30°	30°
Ground pressure RS/SS* Canopy	26.8 kPa (0.27 kgf / cm²)	26.2 kPa (0.27 kgf / cm²)	25.6 kPa (0.26 kgf / cm²) / 27.3 kPa (0.28 kgf / cm²)
Minimum ground clearance	160 mm	175 mm	175 mm
* RS/SS Rubber Shoe/Steel Shoe			
ENGINE			
Model	Yanmar 2TNV70	Yanmar 3TNM68	Yanmar 3TNV70
N° cylinders and displacement	2 / 570 cc	3 / 784 cc	3 / 854 cc
Bore for stroke	70 x 74 mm	68 x 72 mm	70 x 74 mm
Rated output (ISO 1585)	7.3 kW / 2400 rpm	9.5 kW / 2200 rpm	10.5 kW / 2300 rpm
Fuel consumption	286 g / kWh	260 g / kWh	272 g / kWh
Engine oil pan capacity	1.7 L (Maximum level)	2.5 L (Maximum level)	3.8 L (Maximum level)
ELECTRICAL SYSTEM			
Voltage	12 V	12 V	12 V
Battery	12 V - 34 Ah	12 V - 45 Ah	12 V - 45 Ah
Alternator	12 V - 20 A	12 V - 20 A	12 V - 20 A
Starter motor	12 V - 1.0 kW	12 V - 0.9 kW	12 V - 0.9 kW
HYDRAULIC SYSTEM			
Pumps maximum flow rate	11.1 L / min x 2	13.2 L / min x 2	17.2 L / min x 2 + 12 L / min
Max Pressure / Setting	16.2 MPa (165 kgf / cm²)	20.6 MPa (210 kgf / cm²)	20.6 MPa (210 kgf / cm²)
Control	DCS (Direct Control System) controls	hydraulic remote control	hydraulic remote control
DOUBLE ACTION HYDRAULIC CIRCUIT FOR ACCESSORIES			
Maximum flow rate	22.2 L / min	26 L / min	29.2 L / min
Max. setting pressure	16.2 MPa (165 kgf / cm²)	20.6 MPa (210 kgf / cm²)	20.6 MPa (210 kgf / cm²)
END-OF-STROKE CUSHIONING			
Arm cylinder	rod fully extended	rod fully extended	rod fully extended
Rocker arm cylinder	-	-	-
SLEWING SYSTEM			
Slewing speed	8.7 min⁻¹	8.5 min⁻¹	9.4 min⁻¹
Turret braking	automatic multi-disc brake	automatic multi-disc brake	automatic multi-disc brake
BUCKET PERFORMANCE			
Max bucket digging force (ISO 6015)	10.6 kN (1090 kgf)	11.86 kN (1210 kgf)	15.7 kN (1600 kgf)
Max arm digging force (ISO 6015)	6.2 kN (630 kgf)	7.84 kN (800 kgf)	9.35 kN (950 kgf)
LOWER FRAME			
Undercarriage length	1220 mm	1339 mm	1570 mm
Variable gauge undercarriage	700 / 950 mm	870 / 1135 mm	980 / 1300 mm
Tracks width	180 mm	200 mm	230 mm
Lower rollers / upper each side	2	3	3
Track tension	tension spring and grease cylinder	tension spring and grease cylinder	tension spring and grease cylinder
Dozer blade size (width x height) mm	700 / 950 mm x 240 mm	870 / 1130 x 230 mm	980 / 1300 mm x 235 mm
Lift above ground	220 mm	230 mm	230 mm
Drop below ground	150 mm	210 mm	340 mm
TRAVEL SYSTEM			
Travel speed (1st/ 2nd)	1.7 / 3.5 km / h	2.3 / 4.0 km / h	2.1 / 4.0 km / h
CAPACITY			
Fuel Tank Capacity	8.5 L	12.5 L	20 L
Hydraulic reservoir capacity	8.2 L	17 L	19 L
Hydraulic circuit total capacity	14 L	26 L	23 L
Engine coolant	2.2 L	3.6 L	3.6 L
ARM SWING SYSTEM			
Right swing angle	90°	80°	80°
Left swing angle	50°	50°	55°
OTHER DATA			
Noise level LwA	91 dB	93 dB	92 dB

17VXT

19VXT

27V4

0.044 m ³	0.044 m ³	0.064 m ³
400 mm	400 mm	500mm
1655 / 1815 kg	1670 / 1830 kg	2560 / 2730 kg
1730 / 1890 kg	1745 / 1905 kg	2635 / 2805 kg
3590 x 980 x 2345 mm	3665 x 980 x 2340 mm	4000 x 1550 x 2460 mm
30°	30°	30°
26.3 kPa (0.27 kgf / cm ²) / 27.8 kPa (0.29 kgf / cm ²)	26.6 kPa (0.27 kgf / cm ²) / 28.3 kPa (0.29 kgf / cm ²)	31 kPa (0.32 kgf / cm ²) / 32.3 kPa (0.33 kgf / cm ²)
220 mm	380 mm	300 mm

Yanmar 3TNV70	Yanmar 3TNV70	SHIBAURA S773-C
3 / 854 cc direct injection	3 / 854 cc direct injection	3 / 1131 cc
70 x 74 mm	70 x 74 mm	77 x 81 mm
10.5 kW / 2300 rpm	10.5 kW / 2300 rpm	13.6 kW / 2400 rpm
279 g / kWh	279 g / kWh	280 g / kWh
3.8 L (Maximum level)	3.8 L (Maximum level)	4.2 L (Maximum level)

12 V	12 V	12 V
12 V - 45 Ah	12 V - 45 Ah	12 V - 60 Ah
12 V - 20 A	12 V - 20 A	12 V - 40 A
12 V - 1.1 kW	12 V - 1.1 kW	12 V - 2.0 kW
17.2 x 2 + 12 L / min	17.2 x 2 + 12 L / min	28.8 L / min x 2 + 19.2 L / min
20.6 MPa (210 kgf / cm ²)	20.6 MPa (210 kgf / cm ²)	21.6 MPa (220 kgf / cm ²)
hydraulic remote control	hydraulic remote control	hydraulic remote control

29.2 L / min	29.2 L / min	48.0 L / min
20.6 MPa	20.6 MPa	21.6 MPa (220 kgf / cm ²)
rod fully extended	rod fully extended	rod fully extended
-	-	rod fully extended

9.4 min ⁻¹	9.4 min ⁻¹	9 min ⁻¹
automatic multi-disc brake	automatic multi-disc brake	automatic multi-disc brake

15.7 kN (1600 kgf)	15.7 kN (1600 kgf)	21.0 kN (2140 kgf)
10.3 kN (1050 kgf)	9.4 kN (950 kgf)	14.0 kN (1430 kgf)

1570 mm	1570 mm	1900 mm
-	980 / 1300 mm	-
230 mm	230 mm	250 mm
3	3	3/1
tension spring and grease cylinder	tension spring and grease cylinder	tension spring and grease cylinder
980 mm x 235 mm	980-1300 mm x 235	1550 mm x 380 mm
220 mm	220 mm	355 mm
340 mm	340 mm	410 mm

2.1 / 4.1 km / h	2.1 / 4.1 km / h	2.5 / 4.4 km / h
------------------	------------------	------------------

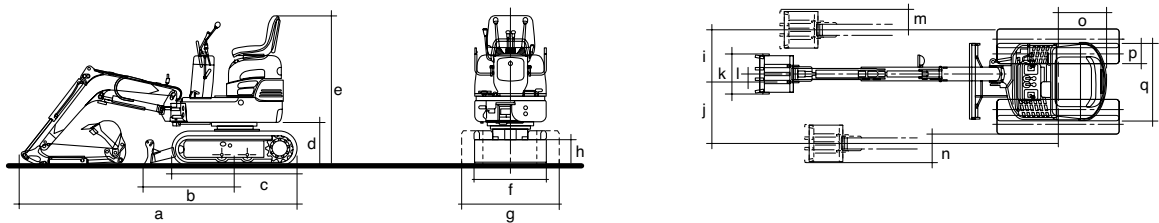
20 L	20 L	42 L
19 L	19 L	33 L
23 L	23 L	50 L
3.6 L	3.6 L	4.4 L

80°	80°	80°
55°	55°	50°

92 dB	92 dB	93 dB
-------	-------	-------



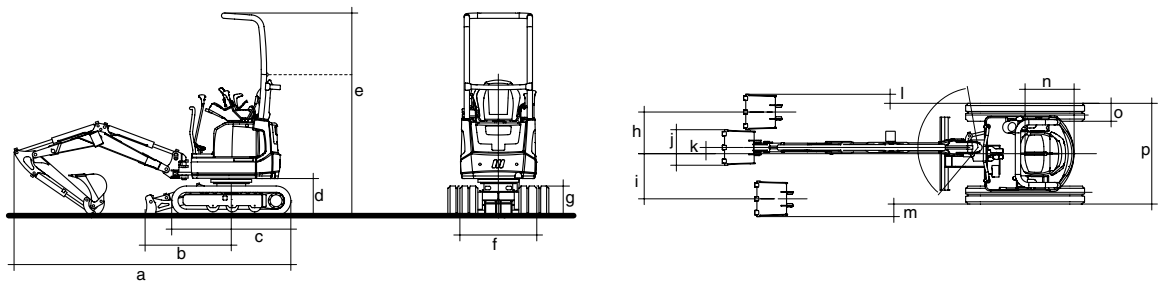
9VXE



DIMENSIONS (mm)

a	b	c	d	e	f	g	h	i	j	k	l	m	n	o	p	q
2700	890	1220	405	1405	720	700 / 950	240	470	570	370	70	180	280	485	180	700 / 950

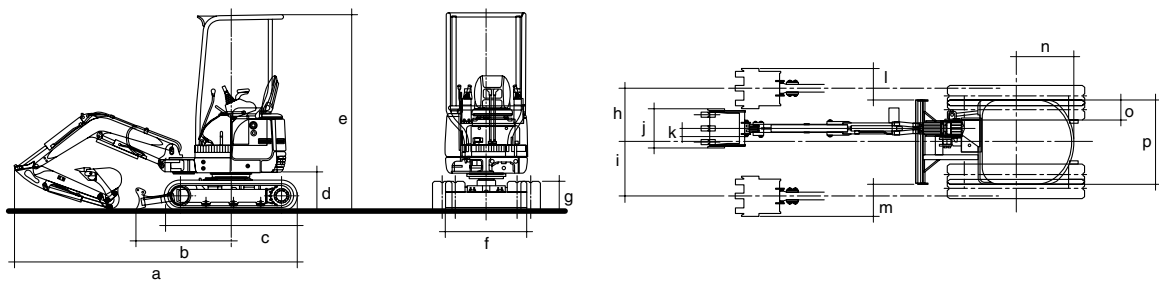
12VXE



DIMENSIONS (mm)

a	b	c	d	e	f	g	h	i	j	k	l	m	n	o	p
3110	970	1339	417	2277 / 1700	870 / 1135	333	469	508	400	70	102	141	552	230	870 / 1135

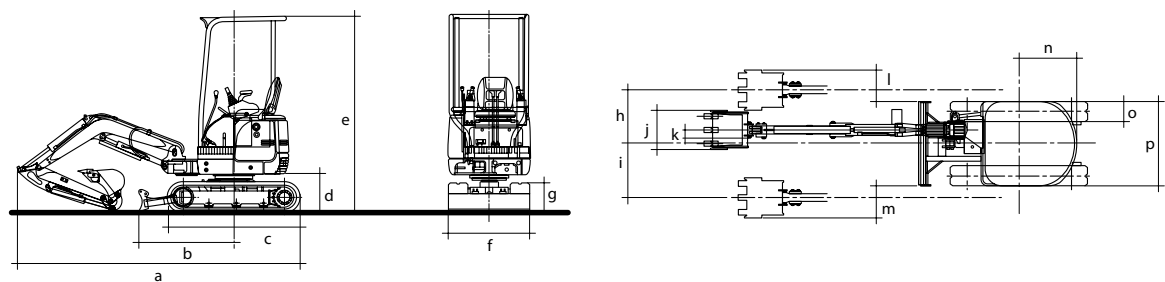
17VXE



DIMENSIONS (mm)

a	b	c	d	e	f	g	h	i	j	k	l	m	n	o	p
3380	1155	1570	460	2330	980 / 1300	395	615	610	400	150	335	330	680	230	980 / 1300

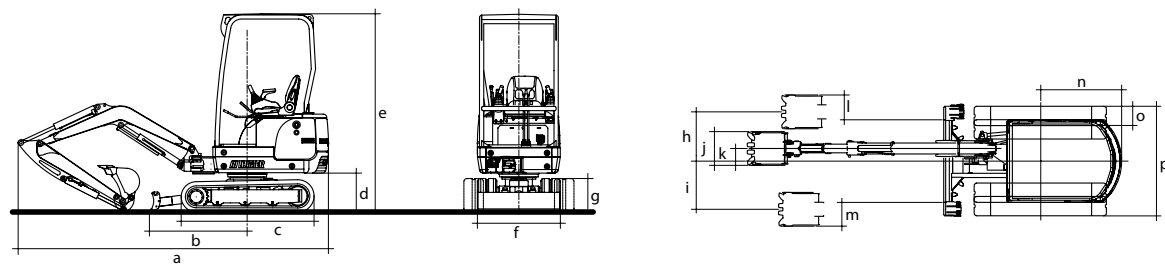
17VXT



DIMENSIONS (mm)

a	b	c	d	e	f	g	h	i	j	k	l	m	n	o	p
3486	1154	1570	462	2345	980	395	585	571	430	150	294	282	1030	230	980

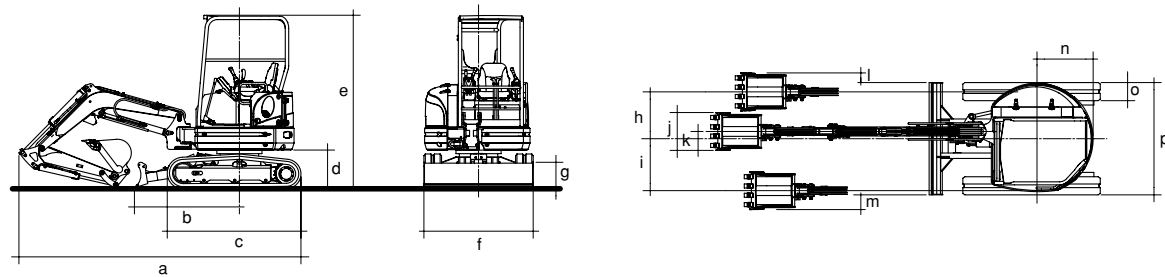
19VXT



DIMENSIONS (mm)

a	b	c	d	e	f	g	h	i	j	k	l	m	n	o	p
3665	1154	1570	459	2340	980 / 1300	395	585	571	430	150	294	282	960	230	980 / 1300

27V4



DIMENSIONS (mm)

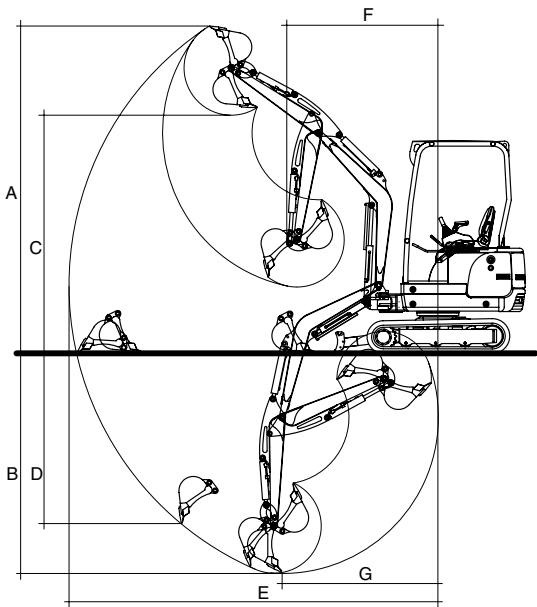
a	b	c	d	e	f	g	h	i	j	k	l	m	n	o	p
4000	1490	1900	550	2460	1550	380	650	720	500	100	125	195	775	250	1550

equipment

	9VXE	12VXE	17VXE	17VXT	19VXT	27V4
SUPPORT FRAME						
Rubber shoe (width mm)	180	200	230	230	230	250 (300 opt)
Attachment points for lifting-anchoring-towing and lubrication of the swing cylinder foot	std	std	std	std	std	std
Variable undercarriage (mm) - Backfill blade with extensions	700-950	870-1135	980-1300	-	980-1300	-
Steel tracks (width mm)	-	-	230 opt	230 opt	230 opt	250 opt
ENGINE						
Two-phase dry air filter with visual clogging indicator	std	std	std	std	std	std
Electric pre-heating device	std	std	std	std	std	std
Fuel water separator	std	std	std	std	std	std
Plastic fuel tank with drain plug	std	std	std	std	std	std
Engine speed adjustment	std	std	std	std	std	std
Auto-Idle and Eco-Mode (fuel consumption reduction)	-	-	-	-	-	-
ELECTRICAL SYSTEM						
12 V battery with fuse box	std	std	std	std	std	std
DRIVING SEAT						
Longitudinal adjustment bucket seat, vinyl covering	-	std	std	std	std	std
Fabric seat	-	-	-	opt	opt	opt
Non-slip rubber mat	std	std	std	std	std	std
Wrist support	-	std	std	std	std	std
Seatbelt	-	with reel	std	std	std	with reel
High speed control	std	std	std	std	std	std
Travel control pedals	-	std	std	std	std	std
EQUIPMENT AND MONITORING DEVICES						
Worklight switch; auxiliary system control	std	std	std	std	std	std
Aux. system proportional control button on joystick	-	-	-	-	-	std
Water temperature control instrument	-	digital	analogue	analogue	analogue	analogue
Fuel level control instrument	visual	digital	analogue	analogue	analogue	analogue
Hour meter	std	std	std	std	std	std
Warning light for: preheating, engine oil pressure, battery charge, water temperature	std	std	std	std	std	std
High speed indicator light	-	-	-	-	-	std
Engine alarm device in case of overheating or low oil pressure	std	std	std	std	std	std
CANOPY VERSION						
FOPS protection against falling objects	-	opt	std	std	std	std
TOPS protection against tipping	-	std	-	-	-	-
TOPS and ROPS protection against tipping and rolling	opt	-	std	std	std	std
CAB VERSION						
TOPS / ROPS protection against tipping / rolling	-	-	-	std	std	std
FOPS protection against falling objects	-	-	-	opt	opt	opt
Heating with fan	-	-	-	std	std	std
Front sliding window under the roof	-	-	-	std	std	std
Removable lower front window	-	-	-	std	std	std
Right-hand side sliding window	-	-	-	std	std	std
Grab handles and "full wide" door handle to facilitate closing from the inside	-	-	-	std	std	std
Radio pre-arrangement	-	-	-	std	std	std
Windscreen wiper and washer on front window	-	-	-	std	std	std
Rearview mirrors (right and left) kit for cab	-	-	-	opt	opt	opt
Back-up alarm	-	-	-	-	-	opt
HYDRAULIC SYSTEM						
ISO assisted hydraulic controls	mechanical	std	std	std	std	std
Pump gear / variable flow rate (std)	gears	std	std	std	std	std
Hydraulic arm swing control	pedal	joystick	pedal	joystick	joystick	pedal
Track adjustment control	std	std	std	-	std	-
Worklight positioned centrally under the arm	-	-	-	-	-	std
DIGGING AND MOVING EQUIPMENT						
Monoblock arm (length mm)	1350	1480	1650	1650	1800	2000
Rocker arm (length mm)	700	870	950	1200	1200	1100
Long rocker arm	+200 mm (opt)	-	+250 mm (opt)	-	-	+300 mm (opt)
Arm hydraulic swinging angle	140°	130°	135°	135°	135°	140°
Limit shock absorber on arm cylinder	std	std	std	std	std	std
Limit shock absorber on rocker arm cylinder	-	-	-	-	-	std
Shock valve on arm cylinder	-	std	std	std	std	-
Rapid attachment of mechanical accessories	opt	opt	opt	opt	opt	opt
Bucket in various dimensions	opt	opt	opt	opt	opt	opt
Loads handling device	-	-	-	-	-	opt
HYDRAULIC CIRCUITS FOR ACCESSORIES						
Hydraulic circuit for hammer with direct return to tank for double-acting accessories	std	std	std	std	std	std
Second hydraulic circuit for double-acting accessories	-	-	-	opt	opt	opt
Third hydraulic circuit for double-acting accessories	-	-	-	-	-	opt
SAFETY AND COMFORT						
Operating and travel controls lock out to enable the operator to exit	std	std	std	std	std	std
Manual lock for the operating and travel controls	std	std	std	std	std	std
Diesel tank cap with lock and mesh filter	std	std	std	std	std	std
Glass breaker hammer in the cab	-	-	-	std	std	std
Turret lock automatic brake	-	std	std	std	std	std
Arm cylinder anti-drift system	std	-	std	std	std	std
Horn	std	std	std	std	std	std
Rear balance weight	-	-	opt	std	opt	-

working range

the drawing is generic and is only for illustrative purposes



	9VXE	12VXE	17VXE	17VXT	19VXT	27V4
A Maximum digging height	2755 / 2950* mm	3052 mm	3610 / 3810* mm	3500 mm	3640 mm	4220 / 4410* mm
B Max. digging depth	1570 / 1770* mm	2010 mm	2100 / 2350* mm	2360 mm	2460 mm	2440 / 2740* mm
C Maximum dumping height	1970 / 2150* mm	2173 mm	2560 / 2760* mm	2520 mm	2660 mm	2900 / 3090* mm
D Maximum vertical digging depth	1175 / 1400* mm	1487 mm	1770 / 2010* mm	1810 mm	1980 mm	1840 / 2120* mm
E Maximum digging radius	2980 / 3190* mm	3456 mm	3760 / 3990* mm	3940 mm	4080 mm	4560 / 4840* mm
F Front turning radius	1220 / 1320* mm	1530 mm	1490 / 1580* mm	1573 mm	1663 mm	2030 / 2090* mm
at right arm swing	950 / 1030* mm	1290 mm	1280 / 1340* mm	1322 mm	1400 mm	1740 / 1790* mm
G Maximum digging depth radius	-	-	-	1625 mm	1714 mm	1930 / 1930* mm

* with long arm





Download the latest version
of this catalogue.



KATO IMER S.p.A.

53037 San Gimignano (SI) Loc. Cusona - Italy
Telephone: +39 0577 951 21 - Fax: +39 0577 982 400
info@katoimer.com | www.katoimer.com