

NIGEL SLOAM & CO PORTFOLIO PERFORMANCE SUMMARY INCLUDING PRUDENTIAL PRUFUND

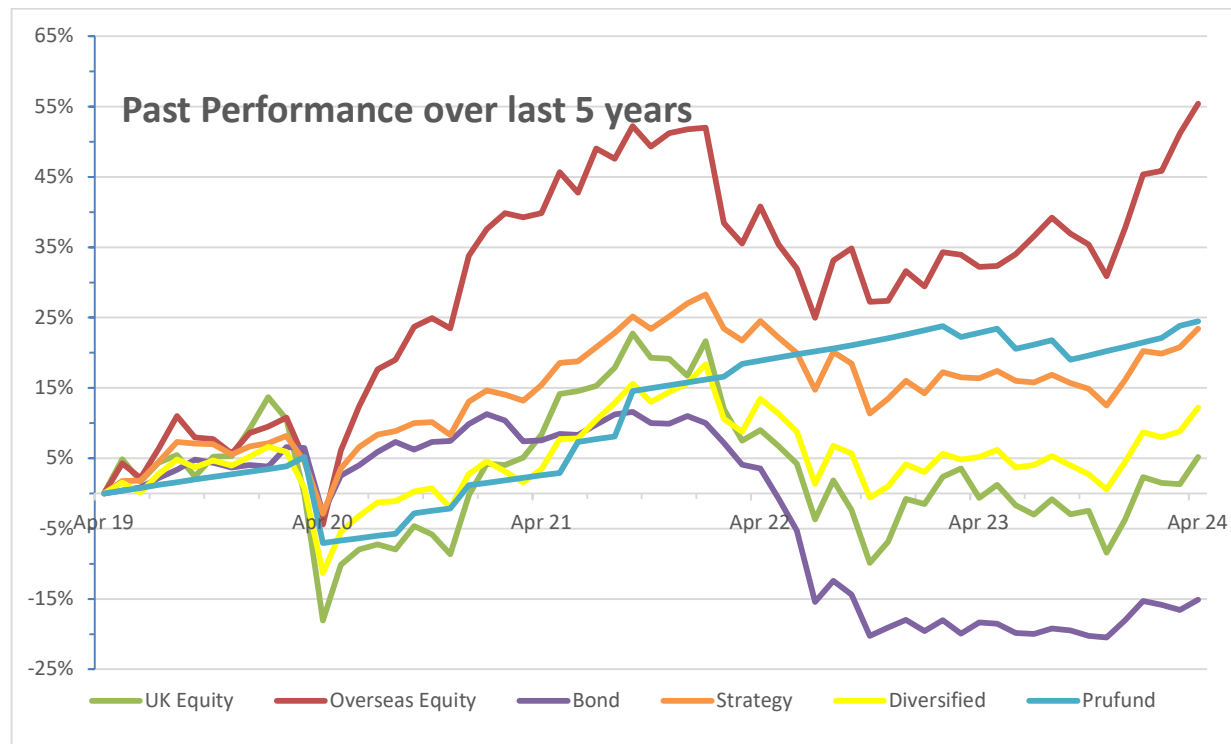
	1 Month %	3 Months %	6 Months %	1 Year %	2 Years %	3 Years %	4 Years %	5 Years %	10 Years %
UK Equity	3.9	2.8	7.8	5.8	-3.5	-2.9	28.3	5.2	36.6
Overseas Equity	2.8	6.9	14.8	17.5	10.4	11.1	62.6	55.4	153.5
Bond	1.8	0.2	6.5	4.0	-18.0	-21.0	-12.6	-15.1	-0.1
Strategy	2.2	2.7	7.5	6.1	-0.8	7.0	27.1	23.5	32.9
Diversified	3.1	3.2	9.2	6.7	-1.1	8.5	26.5	12.2	38.9
Prufund	0.5	2.5	4.1	1.3	4.7	21.4	33.9	24.5	70.8

Portfolio Performance since Launch

	UK Equity	Overseas Equity	Bond	Strategy	Diversified
Launch Date	31/08/09	31/08/09	31/08/09	31/12/10	31/05/13
Total Return (%)	142.3	286.1	34.3	46.3	45.3
Average Annualised Return (%pa)	6.3	9.7	2.0	2.9	3.5

All the above figures are net of all fees assuming an average investment of £200,000.

No entry or exit charges apply to the above investments. Bid/offer spreads may be applicable to some of the underlying funds.



For discrete monthly performances please see next page.

Past performance is not a guide to the future and the value of the units in the underlying funds can go down as well as up. All figures are taken from Financial Express.

