

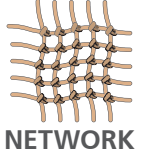
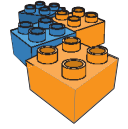


d-COLOR

MF652^{PLUS} MF752^{PLUS}

The **d-Color MF652^{PLUS}** and **d-Color MF752^{PLUS}** are the high-end models within an innovative range of easy-to-use multifunctional colour devices offering outstanding performance and care for the environment, with full compliance to the new Energy Star 2.0 standard.

With speeds of 60 pages per minute in full colour for both models and 75 ppm in mono for the Olivetti d-Color MF752^{PLUS}, the new models can handle the heaviest office workloads with ease. Designed for centralised office locations with large workgroups and CRDs (Central Reprographic Departments).



MULTIFUNCTIONAL DIGITAL COLOUR SYSTEMS

9" CAPACITIVE COLOUR MULTI-TOUCH DISPLAY

EXCELLENT MEDIA CAPABILITY WITH SRA3 & BANNER SUPPORT

DIRECT PRINT AND MOBILE PRINTING

HIGH SPEED SCANNING CAPABILITY & HIGH IMAGE QUALITY

VERSATILE COMMUNICATIONS PLATFORM

REMOTE PANEL CONTROL ACCESS VIA THE WEB

IMPRESSIVE ECO PERFORMANCE

EXCELLENT MEDIA CAPABILITY

The **d-Color MF652^{PLUS}** and **d-Color MF752^{PLUS}** support up to 256 g/m² from any paper tray and the Automatic Duplex too. Paper Trays 1 and Tray 2 can also support up to 500 sheets each of SRA3 paper (320 mm x 450 mm). The bypass can feed Banner paper up to 1.2 meters in length providing you with the in-house flexibility of producing impactful local signage and posters.

INTUITIVE TO USE

The innovative 9-inch Capacitive Colour Multi-touch Display adopts "Flick, Drag, Zoom and Rotate" technology, similar to the operation on today's smartphones and Tablet PCs. The menu screen can be customised to only show the main applications making the function selection easy for everyone.

REMOTE PANEL CONTROL ACCESS VIA WEB BROWSER

Remote Panel facilitates remote access to the Colour Multi-touch Display by the administrator via a secure Web Browser. This capability brings new levels of client support where the user can be assisted remotely in how to use features of the device. Remote Panel also allows the administrator to change the administrative settings of the device remotely. In addition, to help maximise device up-time, it is also possible for Authorised Service Providers (requires your access permission) to provide service support for certain aspects of the MFP device remotely.

VERSATILE COMMUNICATIONS PLATFORM

The standard Dual-Scan system enables simultaneous front and back scanning with speeds of up to 180 opm (originals per minute). Once you have scanned your document, Olivetti provides a useful "real-time" thumbnail preview to check it on the touch-panel before you decide to forward it. The standard controller can also be upgraded to support advanced scanning options including a PDF/A format that meets with legal archiving requirements and Scan-to Searchable PDF (OCR) and OOXML (Office Open XML including docx/xlsx/pptx) file formats. Other options include Barcode font printing and Unicode print support (for SAP printing applications).

In addition, mobile devices such as smartphones and tablets (iOS and Android) can print directly to these models via a Mobile Printing App (requires Wi-Fi access point).



9" multi-touch display with 10-key pad (optional)



Advanced security options, multiple authentication systems



Ideal for any office or workgroup with its ergonomic design and low power consumption

MAXIMISING UP-TIME

The standard paper capacity is 3,650 sheets of paper on-line, this can be further expanded with the addition of an optional 2,500 sheets SRA3 Tray, or a 3,000 sheets A4 Tray bringing the total paper capacity up to an impressive 6,650 sheets. To maximise productivity and device up-time, both the toner cartridges and empty paper trays can be replenished whilst the device is still printing.

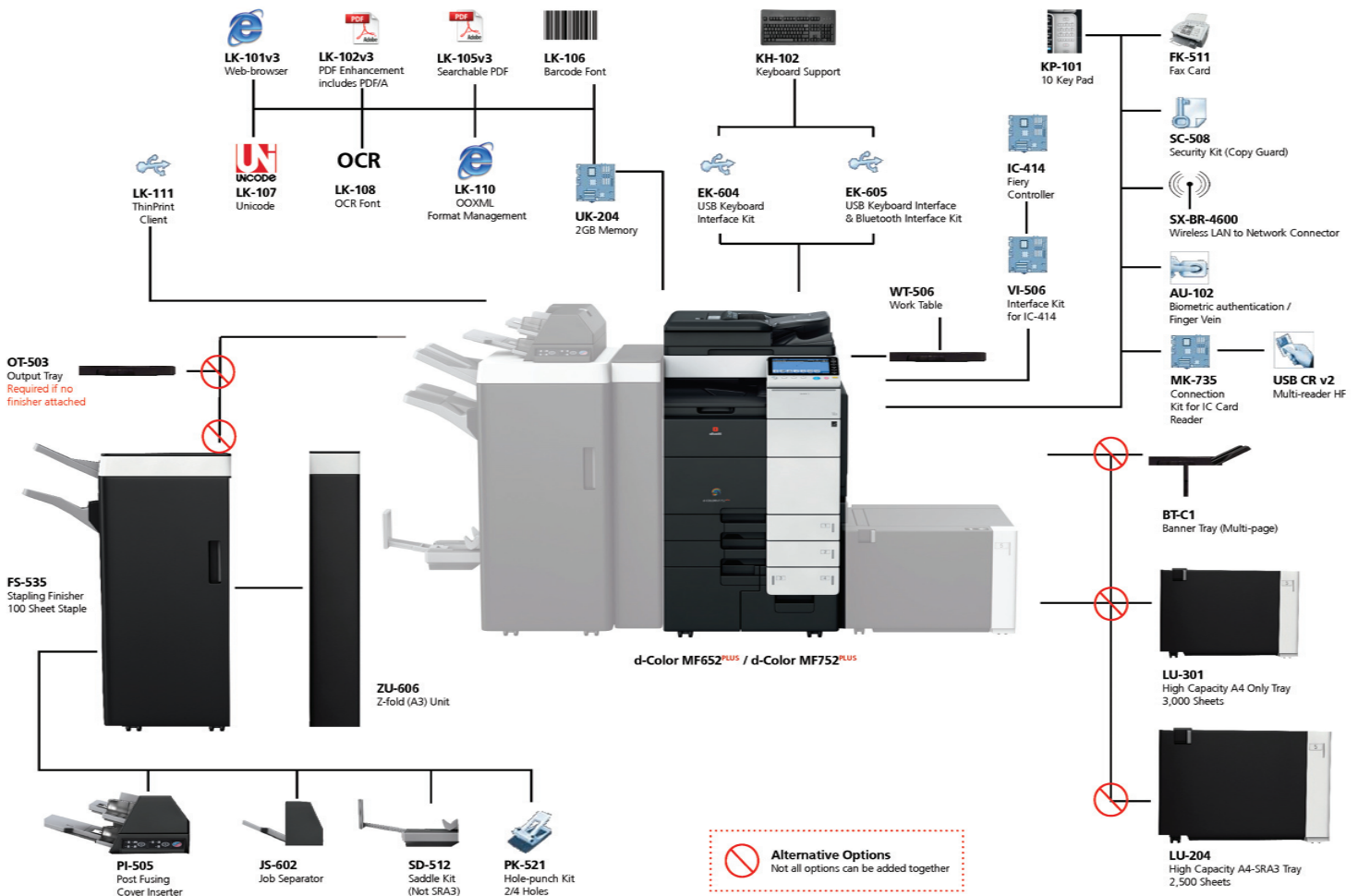
EXCELLENT FINISHING OPTIONS

When you add the optional on-line finishing capabilities, it is easy to create 20 pages (80 images) booklets with an automatic crease-fold and saddle-stitch, with a front cover of up to 209 g/m², providing professional looking B2B documents for your clients.

Other optional finishing functions include Tri-fold of an A4 page into DL size ready for posting; Z-fold of an A3 page for inserting into a A4 document and 2 or 4 hole-punching.



OPTIONS



TECHNICAL SPECIFICATIONS

SYSTEM SPECIFICATIONS

d-Color MF652^{PLUS}

d-Color MF752^{PLUS}

Type	Colour Console	
CPU Controller	PowerPC MPC8536 @ 1.2 GHz	
System Memory	2 GB	
HDD	250 GB	
Interfaces	10-Base-T/100-Base-TX/1,000-Base-T Ethernet; USB 1.1, USB 2.0, USB Host	
Network Protocol	TCP/IP (IPv4 / IPv6), IPX/SPX, NetBEUI, AppleTalk (EtherTalk), SMB, LPD, IPP, SNMP, HTTP	
First Copy/Print Out	3.7 sec. mono and 5.3 sec. colour (A4)	3.6 sec. mono and 5.3 sec. colour (A4)
Copy/Print Speed	60 ppm colour and 65 ppm mono (A4)	60 ppm colour and 75 ppm mono (A4)
	30 ppm colour and 33 ppm mono (A3)	30 ppm colour and 37 ppm mono (A3)
A4 Duplex Speed	60 ppm colour and 65 ppm mono	60 ppm colour and 75 ppm mono
Max. Format Originals	A5 - A3	
Paper Format	A6-SRA3, customised paper format, banner paper max. 1,200 x 297 mm	
Paper Weight	Trays 1-4: 52-256 g/m ² - Bypass: 52-300 g/m ²	
Warm-up Time	Approx. 22 seconds (from power on)	
Power	AC 220-240V 10A (50/60Hz)	
Power Consumption	2.1 kW or less / TEC 4.94 KWh per Week	2.1 kW or less / TEC 5.66 KWh per Week
Automatic Duplex	Paper format: A5-SRA3 - weight: 52-256 g/m ²	
Dimensions (W x D x H)	650 x 799 x 1,155 mm	
Weight	Approximately 221 kg	

SCANNER

Type	Colour scanner
A4 Speed	Up to 180/180 opm
Resolution	600 x 600 dpi
File Format	JPEG, TIFF, PDF, PDF/A 1a and 1b (optional). Compact PDF, Encrypted PDF, Searchable PDF (optional) XPS, Compact XPS, PPTX and searchable DOCX, XLSX & PPTX (optional).
Automatic Document Feed	Dual Scan ADF
Scan Method	Network TWAIN scan, scan-to-eMail (scan-to-Me), scan-to-FTP, Scan-to-SMB (scan-to-Home), scan-to-Box, scan-to-WebDAV, scan-to-DPWS, scan-to-USB
Scan Destinations	2,100 (single + group), LDAP support

PRINTER

Resolution	1,800 x 600 dpi (standard) – 1,200 x 1,200 dpi (for text, line drawings & maps)
Emulations	PCL 6c, PostScript 3, XPS
Operating Systems	Windows XP 32/64bit, Windows VISTA 32/64bit, Windows 8 32/64 Bit, Windows 7 32/64bit, Server 2003/2008 32/64bit, 2008 R2/2012 64bit, Macintosh OS X 10.x, Unix/Linux/Citrix
Fonts	PCL: 80 European - PS: 137 European Type 1
Printer Functions	Direct printing for PCL, PS, TIFF, XPS, PDF, encrypted PDF, OOXML (DOCX, XLSX, PPTX), Mixmedia and Mixplex, "Easy Set" job programming, overlay, watermark, copy protection, carbon copy print

COPIER

Print Process	Electrostatic, indirect tandem laser copy
Toner Type	Polymerised
Copy Resolution	600 x 600 dpi
Greyscale	256 levels
Zoom	Pre-set: 3 types – Zoom: 25-400% (0.1% increments)
Copy Functions	Chapter, page insertion sheet and cover, proof copy (print and display), colour adjustment print test, digital art functions, job memory, poster mode, image repeat, overlay (opt), stamp, copy protection (opt), badge copy

USER BOX SPECIFICATIONS

Max. Box Memory	Up to 3,000 documents or 10,000 pages
Type of System Box	Public, private (with password or authentication), group (with authentication)
Type of System Box	Secure printing, encrypted PDF printing, fax receipt, fax polling
User Box Functions	Reprinting, combination, download, send (e-mail, FTP, SMB and fax), box-to-box copy

FAX

Fax Standard	Super G3 (optional)
Fax Transmission	Analog, i-Fax, Colour i-Fax (RFC3949-C), IP-Fax
Fax Resolution	Max.: 600 x 600 (ultra-fine)
Fax Compression	MH, MR, MMR, JBIG
Modem Fax	Up to 33.6 Kbps
Fax Destinations	2,100 (single + group)
Fax Functions	Polling, delayed transmission, PC-Fax, reception in private boxes, reception via email/FTP/SMB, up to 400 job programmes

FINISHER OPTIONS

Corner, Two-point stapling, Two-hole punching, Four-hole punching, Booklet, A4 Letter fold, A3 Z-fold, Duplex, Combined mixplex / mixmedia, Sheet insertion, Offset sorting, Banner printing (1.2 m)

Product performances are referred to as appropriate use under optimal conditions. The registered trademarks are the property of their respective owners.

The support and availability of the listed specifications and functionalities varies depending upon operating systems, applications, network protocols as well as network and system configurations. All information relating to specification and accessories is subject to change without notice. Olivetti does not guarantee that any prices or specifications mentioned will be error-free.

The d-Color MF652^{PLUS} / d-Color MF752^{PLUS} are distributed by Olivetti S.p.A.
(03/14) - Code: 29188-00

OLIVETTI S.P.A.
VIA JERVIS 77
10015 IVREA (TO) ITALIA
www.olivetti.com

