



**SAME DAY
DELIVERY ORDER**
BEFORE 11:30



**ZERO RING
POLICY NEVER**
LEFT WAITING



**ALL YOUR
PRODUCTS**
ALWAYS IN STOCK

Swiftpak
Leading the way in packaging

CONTENTS

01	LEADING THE WAY	03
02	INTRODUCTION	04
03	MEETING YOUR NEEDS	06
04	SETTING NEW STANDARDS	08
05	PRODUCT	10
06	PROCESS	14
07	SERVICE	16
08	CASE STUDIES	20
09	WHAT OUR CUSTOMERS SAY	22
10	THANK YOU	24



LEADING THE WAY

01 Through innovative, customer centric thinking Swiftpak have become a long standing, trusted supplier amongst many reputable brands and companies who value us for our reliability, outstanding level of service and quality of product.

We put client service and reliability above all else. Our goal is to ensure your packaging operation runs seamlessly, that it is easy to manage and administer, and fulfils its best purpose of protection and presentation efficiently and effectively every time.

INTRODUCTION

SWIFTPAK IS A PRIVATELY OWNED COMPANY
BASED IN READING, BERKSHIRE

→ CONVENIENTLY
LOCATED CLOSE TO
LONDON, WE HAVE
A SUBSTANTIAL
CATCHMENT AREA
FOR AN EVEN
BETTER NEXT DAY
DELIVERY SERVICE



SWIFTPAK'S ROOTS
GO BACK OVER

30

YEARS TO 1977

WHOLESALE
TRANSIT
INDUSTRIAL &
BESPOKE
PACKAGING SUPPLIER



MARKETS WE SPECIALISE
IN INCLUDE...

- AUTOMOTIVE
- PHARMACEUTICAL
- 3PL
- ELECTRICAL
- MANUFACTURING
- BUILDING & CONSTRUCTION

Swiftpak is at its heart a genuine family run business and our ability to thrive in a competitive market has been strengthened by our historical core business model and values.

- Sourcing and importing key products directly from global manufacturers.
- Our emphasis on quick and reliable delivery from stock using our own dedicated transport.
- Our unwavering commitment to quality personal service, embracing honesty, integrity and a high work ethic.

Let Swiftpak help you, call our friendly team on **0118 916 7320**



03



MEETING
YOUR NEEDS

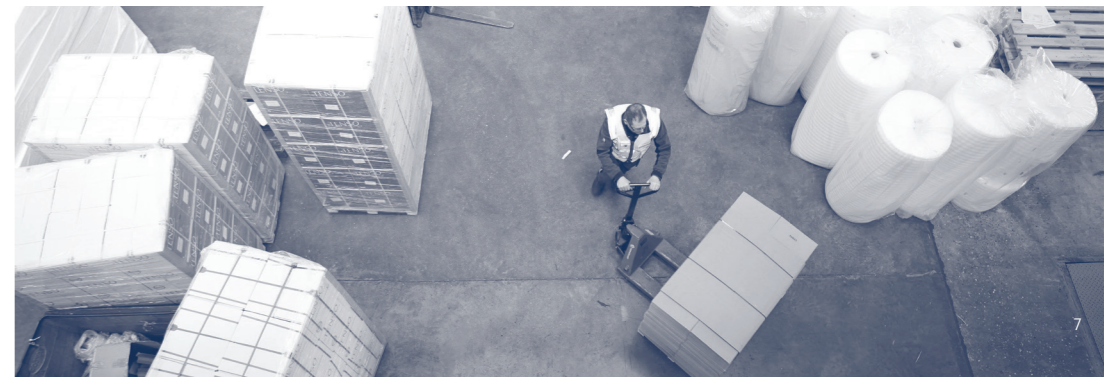
OUR MISSION

To never let our customers down through product quality, innovative thinking and operational excellence, delivered with the genuine warmth, care and attention of our team.



Swiftpak remains a traditional family owned company at heart and as such we value our customers and maintain a flexible, personal approach to our service and, with our long history and connections in the industry, **we know what you need** and have the depth of **products, experience and knowledge to help your business thrive and grow.**

With our ongoing push to become a market leader we have recently undergone major research into the market and the **needs of our customers** and we have redeveloped our brand to align more strongly with our future growth and plans. We continue to grow strongly year on year with our endless drive to become the most forward thinking packaging supplier in the UK.



SETTING NEW STANDARDS

PRODUCT

PROCESS

SERVICE



OUR GOAL AT SWIFTPAK IS TO LEAD THE WAY IN OUR INDUSTRY, WE DO THIS BY CONSISTENTLY SETTING NEW STANDARDS IN PRODUCT, PROCESS AND SERVICE.

➔ **PRODUCT**

Are you using the right products for you and your business?
What products are new?
Can Swiftpak innovate?

➔ **PROCESS**

Are you using your product for maximum efficiency?
Can we drive efficiency in the way you work?
Can we introduce automation?

➔ **SERVICE**

The way a product is delivered
Improve the supply chain, take out cost
Have a better online presence
Showcase smarter invoicing

visit www.swiftpak.co.uk

05
PRODUCT

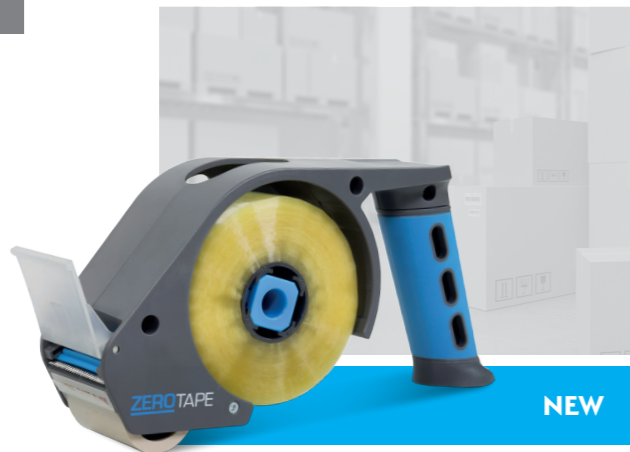


NEW

MWRAP

- 400% stretch capacity
- 75% waste saving*
- Improved holding force
- Reduce cost by up to 60%*

Find out more about Mwrap at www.swiftpak.co.uk



NEW

ZEROTAPE

- New ergonomic design
- 66% less carbon footprint
- 75% less downtime

Find out more about Zerotape at www.swiftpak.co.uk

*Based on actual results achieved in trial case studies, See page 20.



→ **SupaTak** Low Noise
HIGH QUALITY ADHESIVE TAPES FROM SWIFTPAK

→ **SupaTak** Classic
HIGH QUALITY ADHESIVE TAPES FROM SWIFTPAK

→ **SupaTak** 150m
HIGH QUALITY ADHESIVE TAPES FROM SWIFTPAK



**PERFORMANCE
YOU'LL WANT
TO STICK WITH**

SupaTak
HIGH QUALITY ADHESIVE TAPES FROM SWIFTPAK

Supatak

Swiftpak's own brand of superior quality packaging tapes, showing our commitment to investing in competitive quality that our customers can rely on.

PAKTOOL
PACKAGING TOOLS AND MACHINES

Paktool

Recognising the inevitability of automation to drive efficiency, Swiftpak are delighted to be able to offer the Paktool range of durable, reliable and easy to use automated packaging machines developed for our customers in conjunction with our manufacturing partner.

INNOVATIVE SOLUTIONS FOR YOU
WE PRIDE OURSELVES IN CREATING AND DEVELOPING NEW AND INNOVATIVE SOLUTIONS AND PRODUCTS TO MAKE YOUR PACKAGING OPERATION AS OPTIMISED AND EFFICIENT AS POSSIBLE.



05 PRODUCT

At Swiftpak we understand the importance of not only finding the best possible solution for transporting and protecting your products, but also of brand recognition and representation. We are experts in helping businesses get their name out there via their packaging, presenting the brand in the most suitable and effective way.

BESPOKE PRODUCT DESIGNS

→ A selection of some of the bespoke packages we have designed, made and supplied to package and present products for a few of our clients.



ENDOLITE

Award winning lower limb prosthetics



PROTEIN WORLD

Protein shake sachet boxes

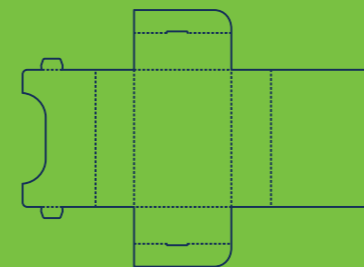


MASURI

World renowned professional cricket helmets



BESPOKE PRODUCT DESIGN



visit www.swiftpak.co.uk



BESPOKE PROTECTIVE PACKAGING

High value parts and products often require bespoke, specialist, protective packaging. Swiftpak has the depth of experience in the design, manufacture and fabrication of bespoke boxes and foam-based protective packaging inserts.

PENLON

A world player in the healthcare industry as a medical device manufacturer, control over the precision, quality and protection of their products is of the highest priority.

ROLLS ROYCE*

Luxury motor vehicle manufacturer renowned worldwide for precision and quality.

*Read the full case study. See page 21.

06
PROCESS

AT SWIFTPAK WE, THROUGH EXPERIENCE, KNOW THAT IT IS NOT JUST ABOUT THE PRODUCTS AND WE ARE NOT JUST A PACKAGING SUPPLIER.

The processes used in your packaging operation are just as important as using the right products for the right purpose. We have seen a lot of different ways of doing things and have the experience and expertise to advise on process improvements as well as the best products for your specific needs, ensuring you are consistently driving efficiency in the way you work and getting the most from your money, time and products.

Swiftpak itself is committed to our own quality management system, we are certified to ISO 9001:2015 and have a policy of continuous improvement covering all of our company procedures and processes that are implemented and endorsed at every level of duty within the company. All of our management and staff are committed to promoting this goal and receive regular training and support in order to achieve and maintain our level of quality of work and operations in all areas of the business.

Call our friendly team on **0118 916 7320**



CASE STUDY

**BUNZL
LOCKHART**

As a valued customer of Swiftpak we agreed to review Lockhart's packing area, with the goal to increase productivity and reduce cost.

16%

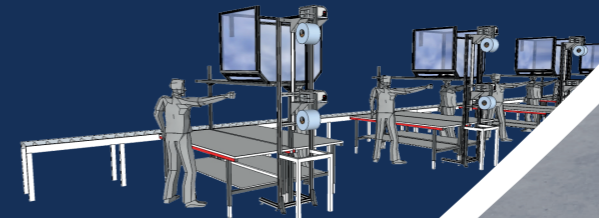
INCREASE IN CAPACITY

Through the redesign of a very busy packing area we were able to introduce two extra packing stations and increase operator work space.

13%

INCREASE IN PRODUCTIVITY

Through the introduction of an over bench automatically fed hopper system we estimated the packers saved 60 minutes per day in down time.



THE PROCESSES USED IN YOUR PACKAGING OPERATION ARE JUST AS IMPORTANT AS USING THE RIGHT PRODUCTS FOR THE RIGHT PURPOSE

visit www.swiftpak.co.uk



07
SERVICE

'BEING AN
EXEMPLARY
**PACKAGING
SUPPLIER**

means more than just providing
great quality products'

**NEVER
LEFT
WAITING**



CHALLENGE US to see if the phone
ever rings more than 3 times when you call.

SERVICE AS STANDARD

- **NEXT DAY DELIVERY** on orders placed before 3:30pm
- **FULL ACCOUNT MANAGEMENT SERVICE** with a dedicated account manager
- **RAPID RESPONSE TIMES** to enquiries, quotes and in dealing with issues
- **FLEXIBLE & RESPONSIVE** service
- **SMARTER** invoicing
- **STOCK HOLDING** capacity
- **CALL OFF ORDERING** arrangements available
- **FREE** packaging waste reports

visit www.swiftpak.co.uk

Let Swiftpak help you, call our friendly team on **0118 916 7320**

07 SERVICE



5 STAR SERVICE ASSURED

"I HAVE USED SWIFTPAK FOR A NUMBER OF YEARS AND HAVE NEVER HAD ANY ISSUES WHEN PLACING ANY ORDERS, THEY ARE ALWAYS KEEN TO HELP, HONEST AND RELIABLE. I WOULD ALWAYS RECOMMEND ANYONE TO USE THEM."

ONLINE PACKAGING MANAGEMENT



OUR PURPOSE BUILT ONLINE PACKAGING MANAGEMENT SYSTEM

gives you full access and control of your company's products, orders, quotes, invoices and more 24 hours a day at the touch of a button. Keeping track has never been easier.

- My products page
- Full order history
- Multiple site/user management
- Order reports by date or user
- Artwork storage

visit www.swiftpak.co.uk

TAILORED SERVICES



WE ARE COMMITTED TO PROVIDING THE BEST POSSIBLE SERVICE TO ALL OF OUR CLIENTS, SERVICE YOU CAN RELY ON COMES AS STANDARD AND WE ARE ALWAYS LOOKING FOR WAYS IN WHICH WE CAN MAKE YOUR JOB EASIER WHERE YOUR PACKAGING IS CONCERNED. IN ADDITION TO OUR STANDARD SERVICE PROMISES WE ALSO PROVIDE A NUMBER OF TAILORED SERVICES TO HELP DRIVE IMPROVEMENT IN YOUR PACKAGING OPERATION.

Environmental review

As your packaging supplier we have the knowledge and expertise to help you meet and exceed your environmental packaging responsibilities. Whether you are obligated under the Packaging Waste Regulations or simply want to reduce your waste and become a more environmentally responsible company, with our professional knowledge and experience we can review your use of packaging and advise you on your options and the best way to achieve this by reducing waste and making more sustainable product choices.

Packaging waste reports

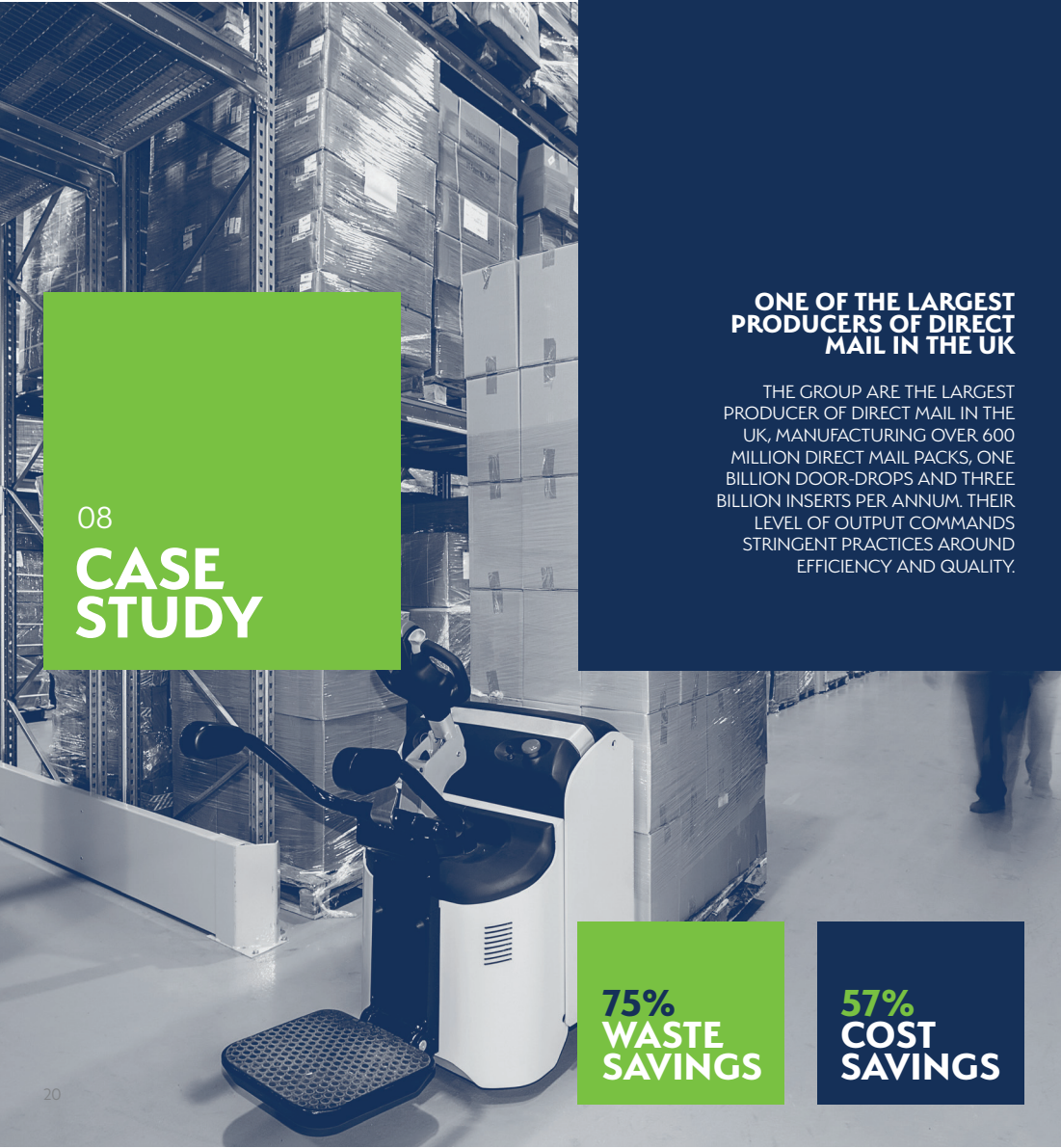
If your company is obligated under the Packaging Waste Regulations 2007 you will no doubt be having to annually calculate your total packaging handling, which can

be a very time consuming and often difficult task. As part of our services we provide free packaging waste reports to all of our customers. These reports consolidate all of your packaging purchased into packaging material type by weight, making the task of producing your reports for your regulation compliance much easier.

Free packaging audit

Takes the work out of assessing the use of packaging in your operation, providing an overview on your exact packaging requirements and usage in order to identify where optimisations and adjustments can be made to help streamline your operation, consolidate your packaging, reduce costs, and improve efficiency.

Let Swiftpak help you, call our friendly team on **0118 916 7320**



08
CASE STUDY

ONE OF THE LARGEST PRODUCERS OF DIRECT MAIL IN THE UK

THE GROUP ARE THE LARGEST PRODUCER OF DIRECT MAIL IN THE UK, MANUFACTURING OVER 600 MILLION DIRECT MAIL PACKS, ONE BILLION DOOR-DROPS AND THREE BILLION INSERTS PER ANNUM. THEIR LEVEL OF OUTPUT COMMANDS STRINGENT PRACTICES AROUND EFFICIENCY AND QUALITY.

75% WASTE SAVINGS

57% COST SAVINGS

MWRAP IN THE WAREHOUSE



Using their existing stretch wrapping machine we conducted a trial of our new MWrap stretch film and compared the results of the trial to the efficiency of their current 21mu power stretch film. The results spoke for themselves.

MWrap uses the latest technology in film manufacture making it thinner and stronger, meaning less wrap is needed to secure the pallets while achieving a higher holding force. The results of the trial produced cost savings of up to 57% and impressive waste savings of 75% equating to 13 tonnes of film/year. Furthermore the total holding force of the pallet was increased meaning there was yet further potential to reduce the number of wraps and save on wrapping time in the operation.

These impressive results are not isolated cases and many of our clients have also enjoyed similar significant improvements in their stretch wrapping operation. A prime example of how keeping abreast with the changing technology in the packaging industry is key to our core business goals.



08
CASE STUDY

ROLLS ROYCE BESPOKE TRANSIT BOXES

ROLLS ROYCE IS SYNONYMOUS WITH LUXURY, PRECISION AND QUALITY. RENOWNED THROUGHOUT THE WORLD FOR THEIR IMPECCABLE STANDARDS, THE PACKAGING AND PROTECTION OF THEIR MOTOR CAR BODY AND ENGINE PARTS IN TRANSIT IS, NEEDLESS TO SAY, IMPERATIVE TO MAINTAINING THEIR LEVEL OF QUALITY AND REQUIRES THE HIGHEST LEVEL OF INTRICATELY THOUGHT OUT, TESTED AND DESIGNED MADE TO MEASURE PACKAGING.

BESPOKE PACKAGING DESIGN



Swiftpak have worked with Rolls Royce motor cars for many years now and through close collaboration with their engineers we were able to create a cost effective and unique solution to the safe transportation of their parts. This involves the design and supply of the ultimate in bespoke, custom made packaging (see examples on page 12-13).

The packaging was specifically designed to guarantee protection of their body parts during transit and shipping and from custom cut out cartons for their windscreens, body panels, grills and bumpers to their tyres, each packaging solution was designed specifically for each product's unique shape, weight and protective requirements. We continue to enjoy a trusted and strong supplier relationship with them and are very proud to be their supplier of choice for such an important role.



"ALWAYS 'SWIFT' TO RESPOND TO QUERIES AND TO ASSIST IN NEW BESPOKE PACKAGING, QUALITY AND SERVICE IS 1ST CLASS!"
JFC ENGINEERING



"VERY GOOD COMPANY, ABLE TO ACCOMMODATE MY NEEDS AND THEIR FRIENDLY STAFF ARE ALWAYS HELPFUL"
JOE ALLEN



"VERY GOOD SERVICE, PROMPT REPLY TO ANY QUERIES THAT MAY ARISE OVER STOCK OR PRICE"
INTERMAIL LTD



"EASY TO FOLLOW WEBSITE, EASY TO USE AND DELIVERED WITHIN 1 DAY OF ORDERING."
GENERAL LAMPS LTD



"GOOD COMPANY WITH FRIENDLY HELPFUL STAFF. GOOD PRICES AND FAST DELIVERY."
IAN



"ALWAYS POLITE, HELPFUL AND INFORMATIVE. DELIVERY IS FAST TOO. A TRUSTED SUPPLIER FOR ME."
PAUL



"VERY HELPFUL FAST DELIVERY SERVICE GREAT TO WORK WITH."
WESTCOAST HALIFAX



"I HAVE ALWAYS HAD A VERY POSITIVE EXPERIENCE WITH SWIFTPAK, THEIR SERVICE IS TOP RATE, DELIVERIES ARE ALWAYS ON A VERY QUICK TURNAROUND AND THEIR PRICING IS VERY COMPETITIVE."
RUSSEL

WHAT OUR CUSTOMERS SAY



"WE HAVE USED SWIFTPAK FOR OUR PACKAGING NEEDS FOR A NUMBER OF YEARS. VERY RELIABLE, HELPFUL AND EFFICIENT"
CHM SALES



"GREAT LEVEL OF SERVICE, SPEEDY DELIVERY AND NO ISSUES. WOULD DEFINITELY RECOMMEND TO ANYONE."



"THE SERVICE WE RECEIVE IS SECOND TO NONE! WOULD CERTAINLY RECOMMEND SWIFTPAK, STAFF ALWAYS VERY HELPFUL."
MR. LEWENDON



"ALWAYS ON TIME"
BART



"FAST SERVICE, NEXT DAY DELIVERY, COURTEOUS CUSTOMER SERVICE, IF ONLY ALL SUPPLIERS WERE LIKE SWIFTPAK."
CHM SALES



EXCELLENT ON TRUSTPILOT



WE REGULARLY MONITOR OUR PERFORMANCE THROUGH FEEDBACK REQUESTS FROM OUR CUSTOMERS AND WE ARE CURRENTLY RATED 'EXCELLENT' ON TRUSTPILOT.

Please log on to: uk.trustpilot.com/review/swiftpak.co.uk to see what our customers have to say about us or click the link from our website. When and if we don't get it right we will go out of our way to rectify the situation for our customer as soon as we can and they can be sure we will put measures in place to ensure that things don't go wrong again.



Tel 0118 916 7320
Email sales@swiftpak.co.uk
Visit swiftpak.co.uk

THANK YOU

JUST A QUICK THANK YOU!

At Swiftpak, we feel it is important to build strong relationships through great communication, now and into the future. Whether it is phone, web or email, contact us your way... and let us help you. With Swiftpak as your dedicated packaging partner, you can expect peace of mind, it means you can concentrate on your core business. Together we grow. Thank you!

A handwritten signature in black ink that reads "Craig Gulley". The signature is written in a cursive, flowing style.

Craig Gulley
Managing Director at Swiftpak

Setting new standards



Swiftpak House, Arrowhead Road, Theale, Reading, RG7 4AH

Tel 0118 916 7320 **Fax** 0118 916 7321 **Email** sales@swiftpak.co.uk **Visit** swiftpak.co.uk