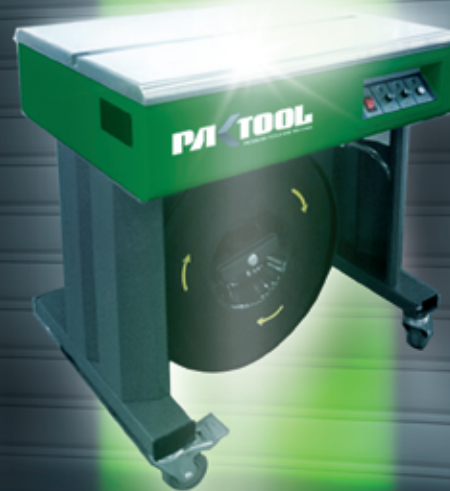


UNPRECEDENTED QUALITY MEETS INNOVATIVE TECHNOLOGY...

PAK TOOL
PACKAGING TOOLS AND MACHINES

Enjoy the future
of packaging...
today

PAK TOOL
PACKAGING TOOLS AND MACHINES



Contact us today to discuss your requirements.

Swiftpak
Expect more

PAK TOOL

PACKAGING TOOLS AND MACHINES

Machine Taper

Our full range of machine tapers come highly recommended for being durable and reliable.

There are many options across the range including top and bottom drive belts, side drive belts, or the option of both. Flap closers top and bottom. Easily adjustable to take different size cartons.

- Compatible for tape widths up to 72mm.
- Top & side drive belts.
- Suitable for heavy products.

TOT610

Our most popular machine taper comes recommended as a reliable and very versatile machine that will fit your budget.

- Includes top and side driving belts
- Will run 15mm, 38mm, 50mm and 72mm width tape
- Box capacity is (L) 120mm-unlimited (W) 120mm-480mm (H) 120mm-480mm
- Available as single phase 240V or 3 phase
- Consumes 450W
- Fully adjustable legs to match your bench height.
- Sealing speed 20m/min



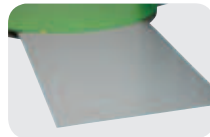
SEE PAGE 122
FOR MORE DETAILS

Stretch Wrap Machine

Orbitwrap Features:

- 1650mm Diameter Turntable
- Adjustable Turntable Speed
- Adjustable Film Carriage Speed
- Soft start and stop
- Programmable Wrap Cycles
- Password Protect
- Photoeye height detection
- Two Metre Mast
- Single Phase 240v
- Front and Rear Forklift Entry

Code	Description	Size
TOMHFG	Automatic pallet Stretch Wrapper	1650 x 2000mm



SEE PAGE 99
FOR MORE DETAILS



Strapping Speed: 2.5 second/cycle

Fully Automatic Strapping Machine

A Fully-Automatic strapping machine designed to be integrated into any packing line.

Parcels are rolled underneath the arch with the option of a ball sensor, foot pedal or push button to activate the strap cycle, causing the band to tension around the parcel, seal and cut without the need of any manual feeding.

Very quick and simple to use, saving vital time and money. Ideal in rapid despatch areas where multi sized parcels are being processed.

"Fully automated. Excellent strapping speed and robust construction"

Code For use with strap widths

TOS610	9/12/15.5mm
--------	-------------

SEE PAGE 133
FOR MORE DETAILS

Automatic Strapping Machine

Semi Automatic Strapping Machine:

A very popular machine designed to provide a quick and efficient method of strapping single or multiple packages of varying sizes.

The machine features electronic tension and strap feed control, will accept strap between 6 and 15.5mm, and has a home positioning switch in the event of a miss feed.

Hinged lid includes isolator switch for operator safety.

Code	Description	Size
TOS114	Open Frame	6/9/12/15.5mm
TOS214	Enclosed Frame	6/9/12/15.5mm

Large table top work surface.

Simple to use control panel.



SEE PAGE 133
FOR MORE DETAILS