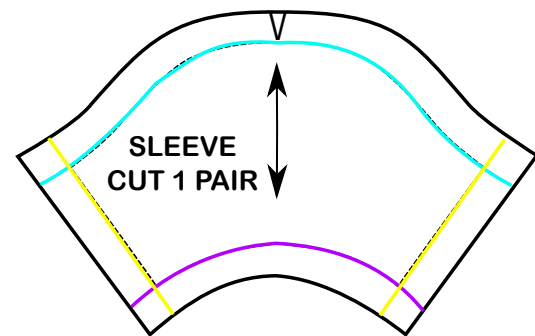
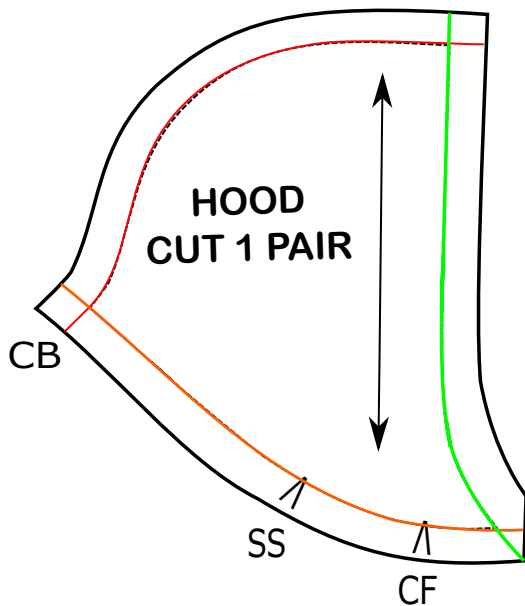
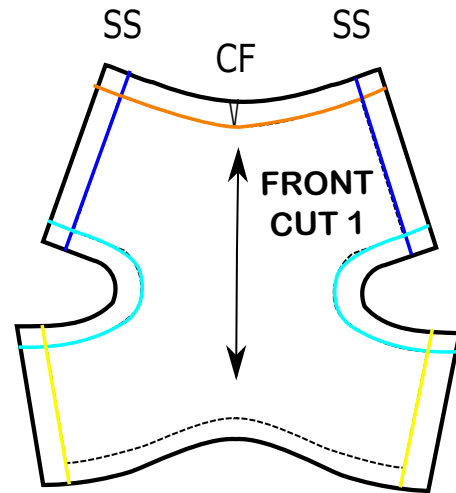
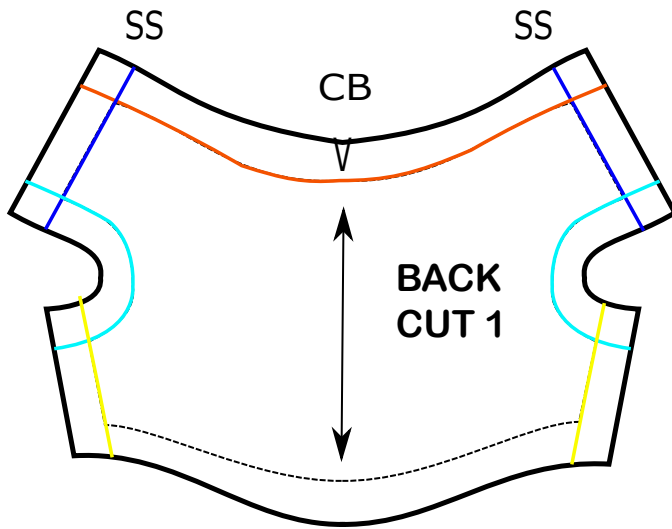


MAKING INSTRUCTIONS

PATTERN NOT TO SCALE



CB = Centre Back
CF = Centre Front
SS = Shoulder Seem

BASIC HOODIE SEWING INSTRUCTIONS

Cut out all the pieces indicated above in a t-shirt / jersey fabric of your choice.

Cut a small slit on the edge of the fabric where you see the "V" symbol. This will help you to match up the pieces when stitching them together. These are called "notches".

When you stitch each piece together make sure they are placed with the correct side facing each other.

Stitch hood seem together along red line, followed by the hood hem along the green line.

Place front piece on to of the back with correct sidesfacing. Match up the shoulder seems and stitch both shoulder seems together along the blue line to make a neck hole.

Stitch the hood onto the neck on both front and back pieces along the orange line making sure you match the notches and you cross over the front pieces of the hood at the centre front point.

Stitch up the sleeve hem along the purple line

Stitch each sleeve in the each armhole following the turquoise line matching the notch to the shoulder seem.

Stitch all along the sleeve seem and body side seems on both sides match armhole points together, follow the yellow line.

Finally, stitch up the hem on the bottom.

